

MARATHON
neo VALLEY
Bhandup W





Master Layout Plan

NeoValley is a proposed 16 acre cluster development at Kranti Nagar



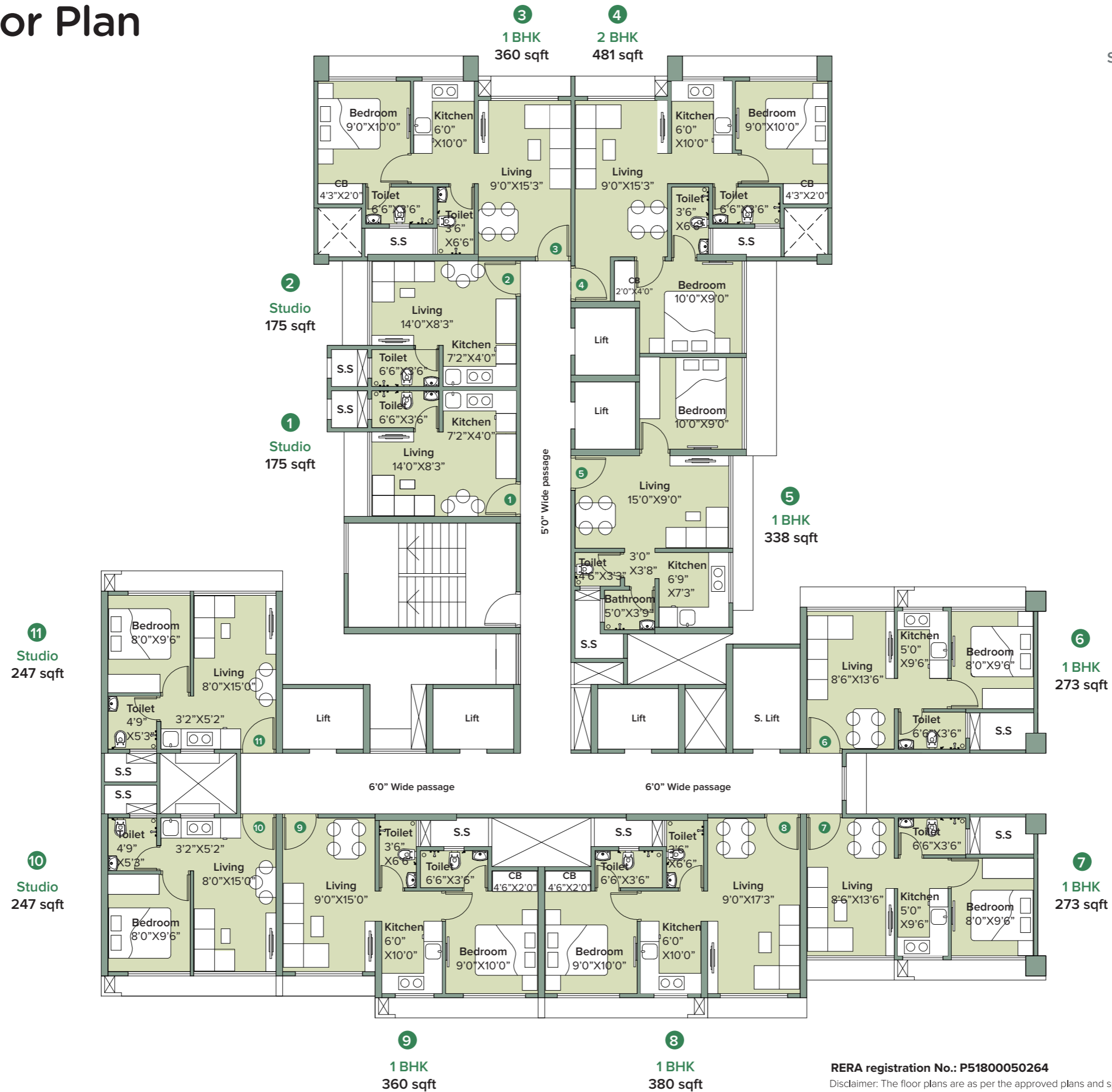
Building Layout Plan

Narmada (Wing B)



Typical Floor Plan

Wing B



Floors 8 & 15 are refuge floors and the following flats are not available for sale:

Flat no. 6 & 7 are not available for sale
Flats 1 & 2 have been combined to make a 1 BHK

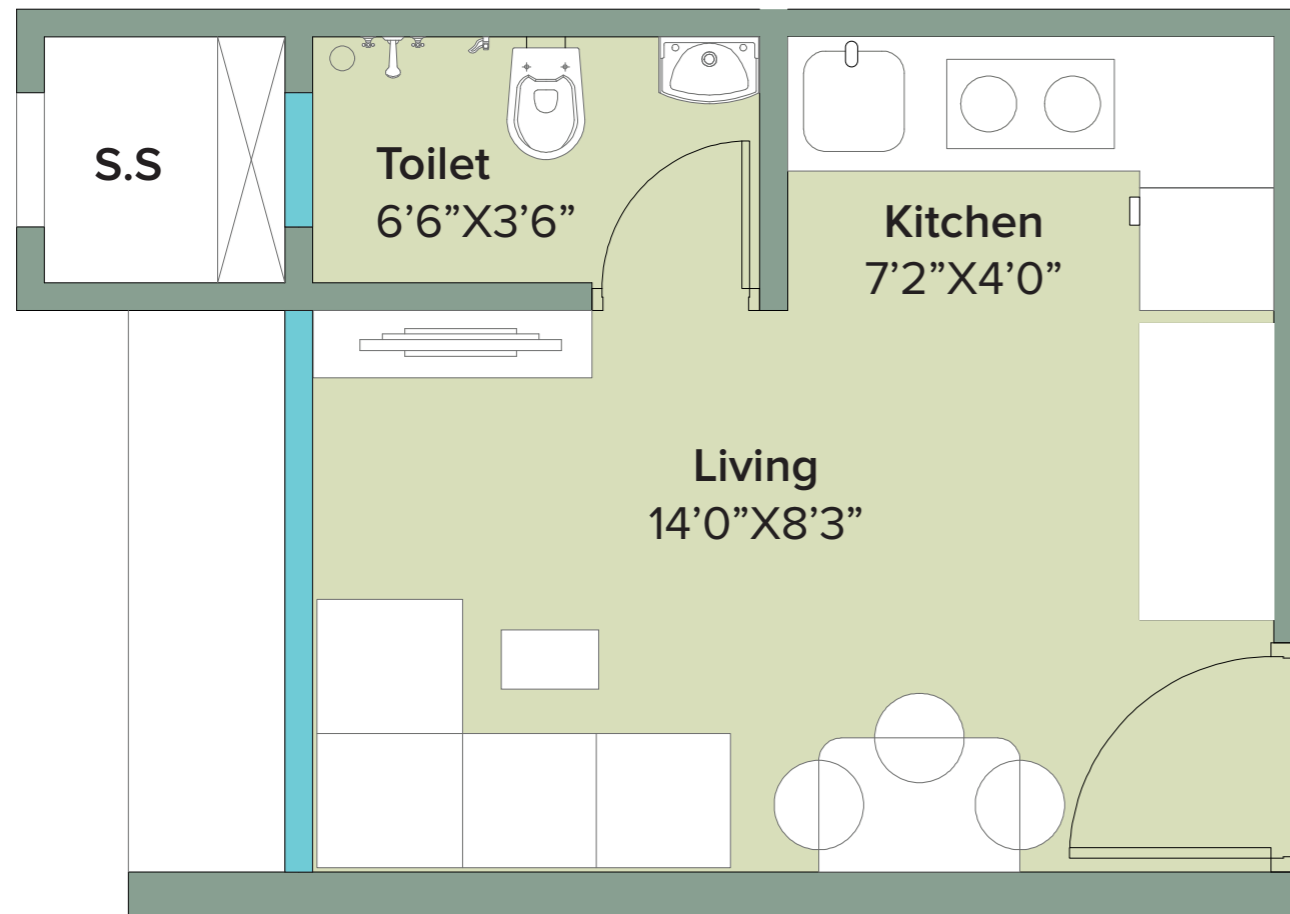
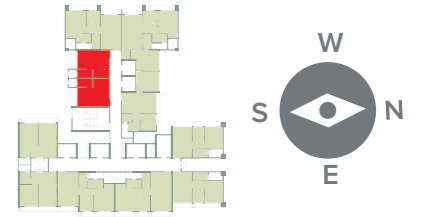
RERA registration No.: P51800050264

Disclaimer: The floor plans are as per the approved plans and specifications as of date. These plans may vary by +/- 3% and are subject to changes. The furniture, accessories, etc. shown in the plans does not form a part of the offering. Customers are requested to visit the site office and apprise themselves of all the necessary details prior to making any purchase decisions.

*Areas mentioned are RERA carpet area

Unit Plan

Studio - 175 sqft



This configuration is available in flat numbers 1 & 2

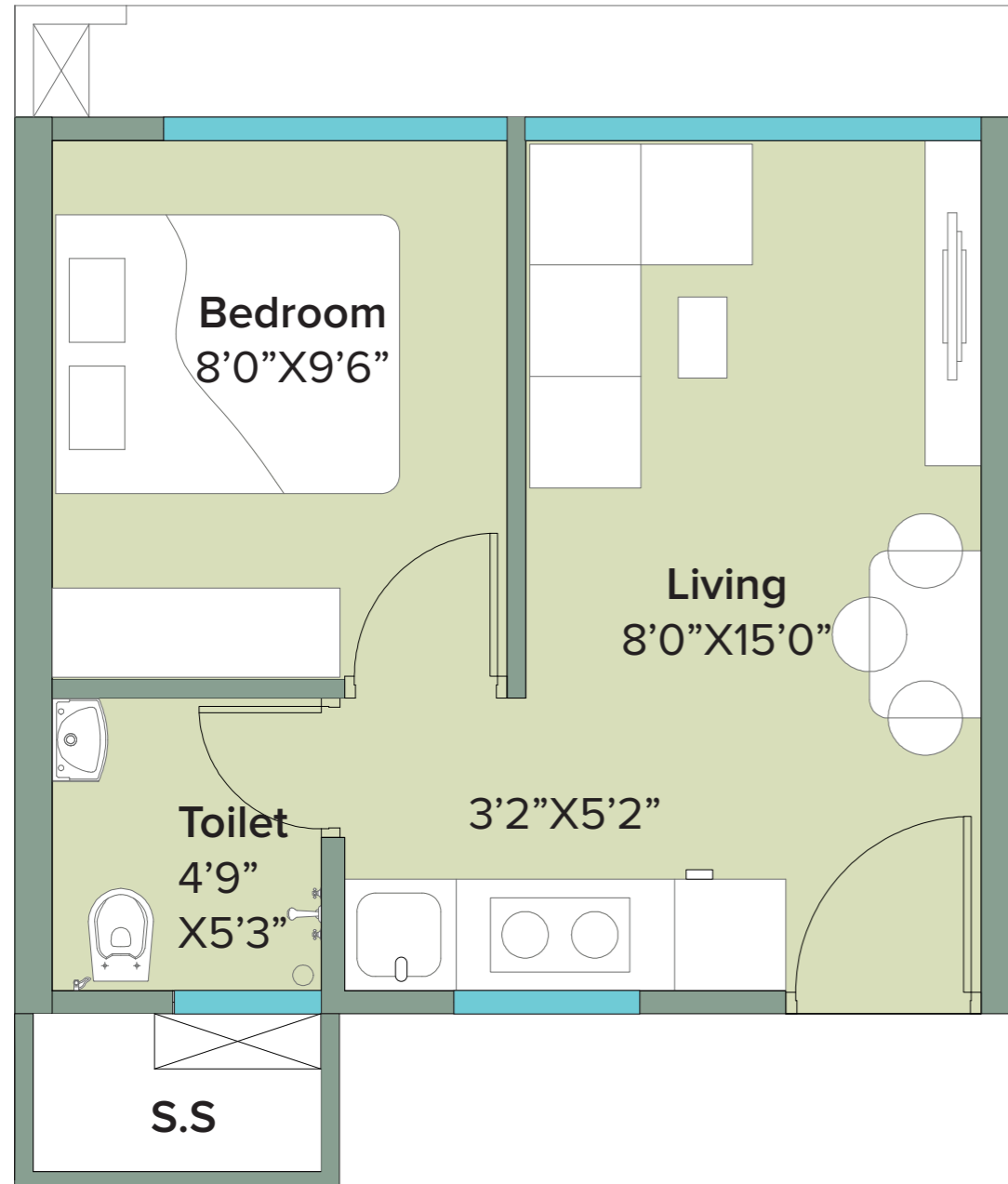
RERA registration No.: P51800050264

Disclaimer: The floor plans are as per the approved plans and specifications as of date. These plans may vary by +/- 3% and are subject to changes. The furniture, accessories, etc. shown in the plans does not form a part of the offering. Customers are requested to visit the site office and apprise themselves of all the necessary details prior to making any purchase decisions.

*Areas mentioned are RERA carpet area

Unit Plan

1 BHK Smart - 247 sqft



This configuration is available in flat numbers 10 & 11

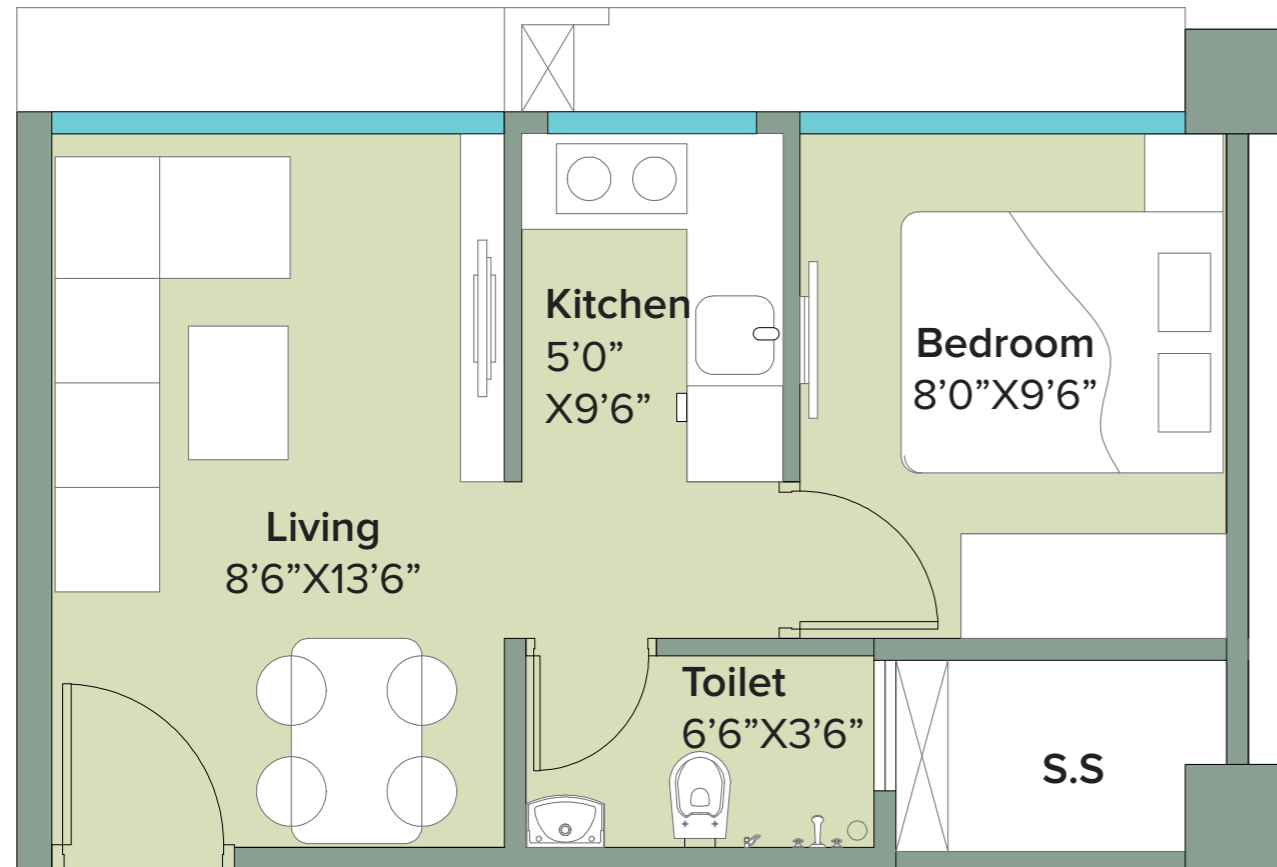
RERA registration No.: P51800050264

Disclaimer: The floor plans are as per the approved plans and specifications as of date. These plans may vary by +/- 3% and are subject to changes. The furniture, accessories, etc. shown in the plans does not form a part of the offering. Customers are requested to visit the site office and apprise themselves of all the necessary details prior to making any purchase decisions.

*Areas mentioned are RERA carpet area

Unit Plan

1 BHK Smart - 273 sqft



This configuration is available in flat numbers 6 & 7

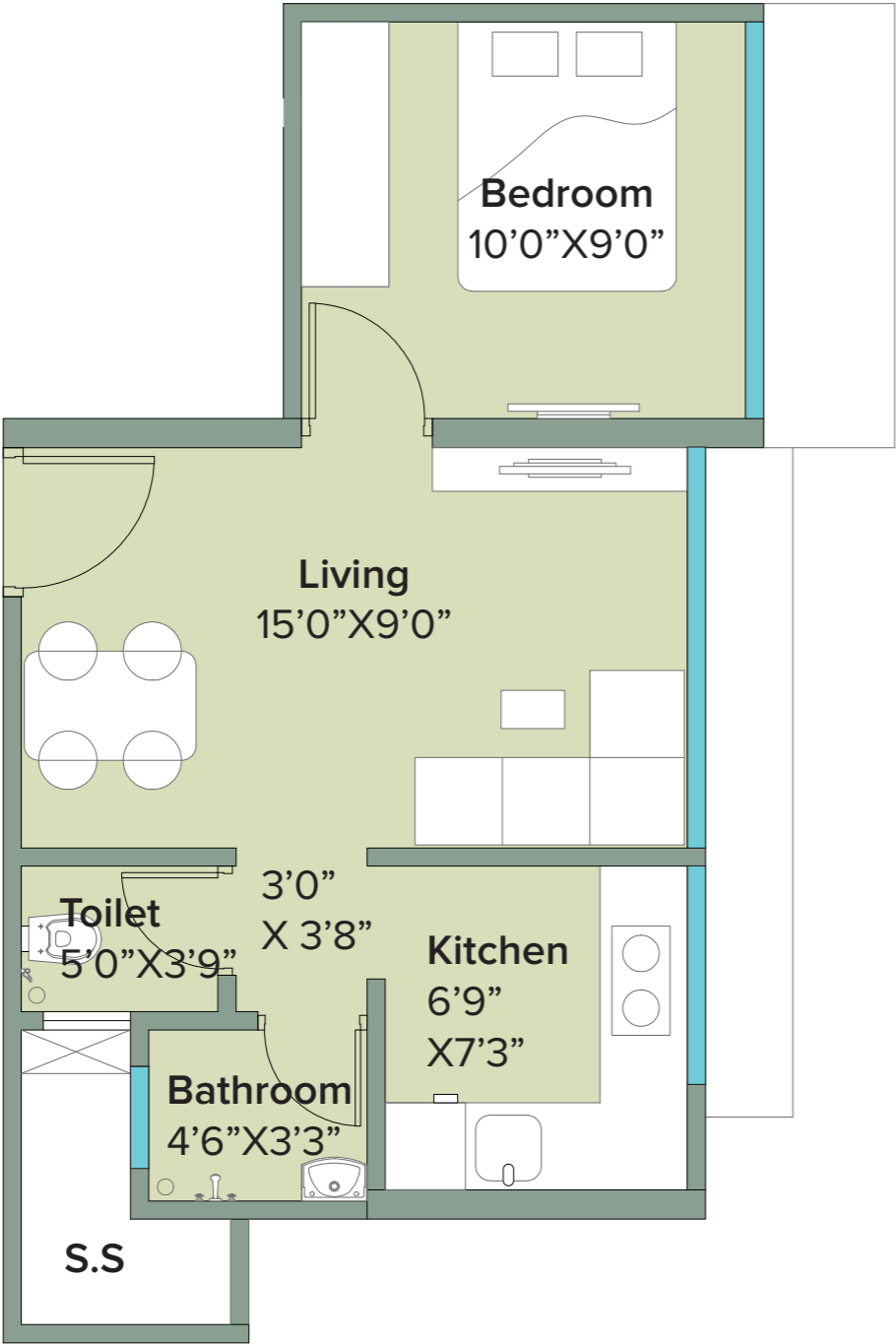
RERA registration No.: P51800050264

Disclaimer: The floor plans are as per the approved plans and specifications as of date. These plans may vary by +/- 3% and are subject to changes. The furniture, accessories, etc. shown in the plans does not form a part of the offering. Customers are requested to visit the site office and apprise themselves of all the necessary details prior to making any purchase decisions.

*Areas mentioned are RERA carpet area

Unit Plan

1 BHK Premium - 338 sqft



This configuration is available in flat number 5

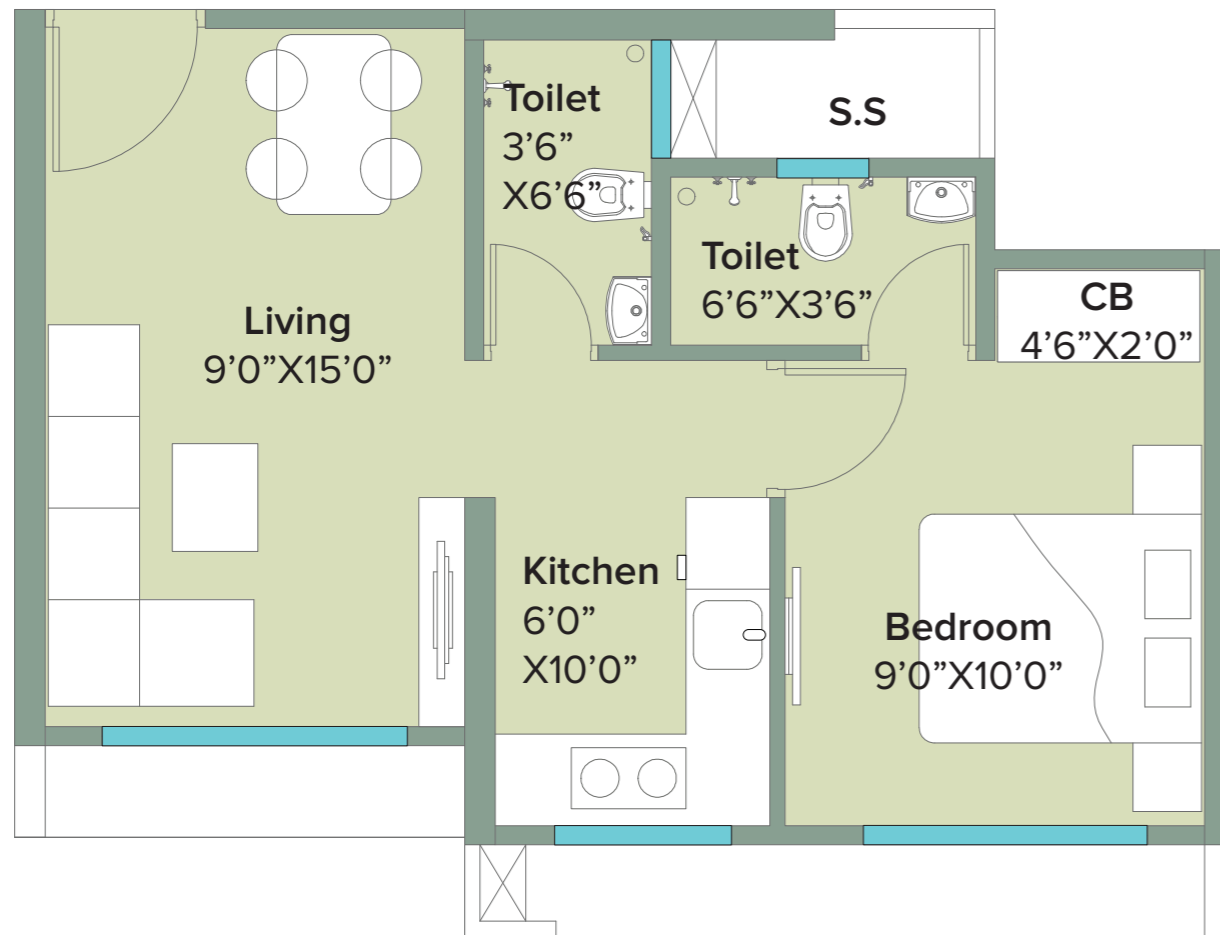
RERA registration No.: P51800050264

Disclaimer: The floor plans are as per the approved plans and specifications as of date. These plans may vary by +/- 3% and are subject to changes. The furniture, accessories, etc. shown in the plans does not form a part of the offering. Customers are requested to visit the site office and apprise themselves of all the necessary details prior to making any purchase decisions.

*Areas mentioned are RERA carpet area

Unit Plan

1 BHK Premium - 360 sqft



This configuration is available in flat number 3 & 9

RERA registration No.: P51800050264

Disclaimer: The floor plans are as per the approved plans and specifications as of date. These plans may vary by +/- 3% and are subject to changes. The furniture, accessories, etc. shown in the plans does not form a part of the offering. Customers are requested to visit the site office and apprise themselves of all the necessary details prior to making any purchase decisions.

*Areas mentioned are RERA carpet area

Unit Plan

1 BHK Premium - 380 sqft



This configuration is available in flat number 8

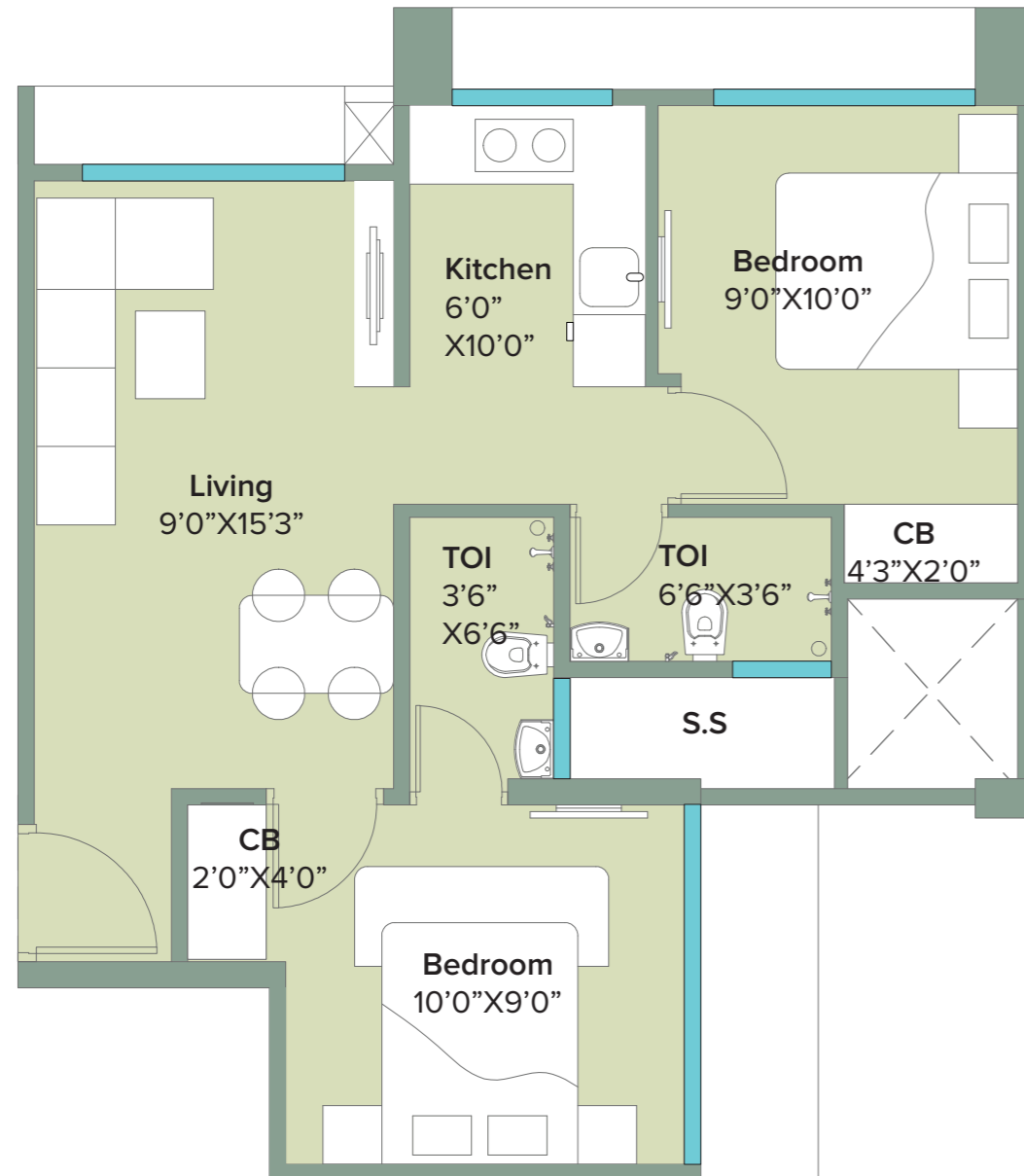
RERA registration No.: P51800050264

Disclaimer: The floor plans are as per the approved plans and specifications as of date. These plans may vary by +/- 3% and are subject to changes. The furniture, accessories, etc. shown in the plans does not form a part of the offering. Customers are requested to visit the site office and apprise themselves of all the necessary details prior to making any purchase decisions.

*Areas mentioned are RERA carpet area

Unit Plan

2 BHK - 481 sqft



This configuration is available in flat number 4

RERA registration No.: P51800050264

Disclaimer: The floor plans are as per the approved plans and specifications as of date. These plans may vary by +/- 3% and are subject to changes. The furniture, accessories, etc. shown in the plans does not form a part of the offering. Customers are requested to visit the site office and apprise themselves of all the necessary details prior to making any purchase decisions.

*Areas mentioned are RERA carpet area

MARATHON
neo VALLEY



The project has been registered via MAHA RERA registration no. - Marathon NeoValley-Narmada : P51800050264 and is available on the website <https://maharera.mahaonline.gov.in>