

# MARATHON Nexzone Panvel

**Site & Sales Office:**

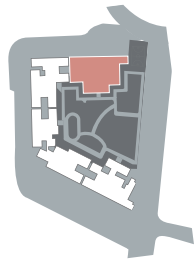
Marathon Nexzone, National Highway, 4B-JNPT Highway,  
Near Palaspe Phata, Panvel, Mumbai, Maharashtra 410206

**T** : 7671900900 | **W** : [marathon.in/nexzone](https://marathon.in/nexzone)

Daffodil

1st to 33rd Floor

Typical Floor Plan



GARDEN SIDE VIEW

Floors 6, 11, 16, 21, 26, 31 are refuge floors and the following flats are not available for sale:  
Flat no. 2 is not available for sale.  
Flats 3 & 4 have been combined to make a 2 BHK

RERA Application Id: REA52000063453/ REA52000063455  
Disclaimer: The floor plans are as per the approved plans and specifications as of date. These plans may vary by +/- 3% and are subject to changes. The furniture, accessories, etc. shown in the plans does not form a part of the offering. Customers are requested to visit the site office and apprise themselves of all the necessary details prior to making any purchase decisions.  
\*Areas mentioned are RERA carpet area+ Enclosed balcony area

Cedar

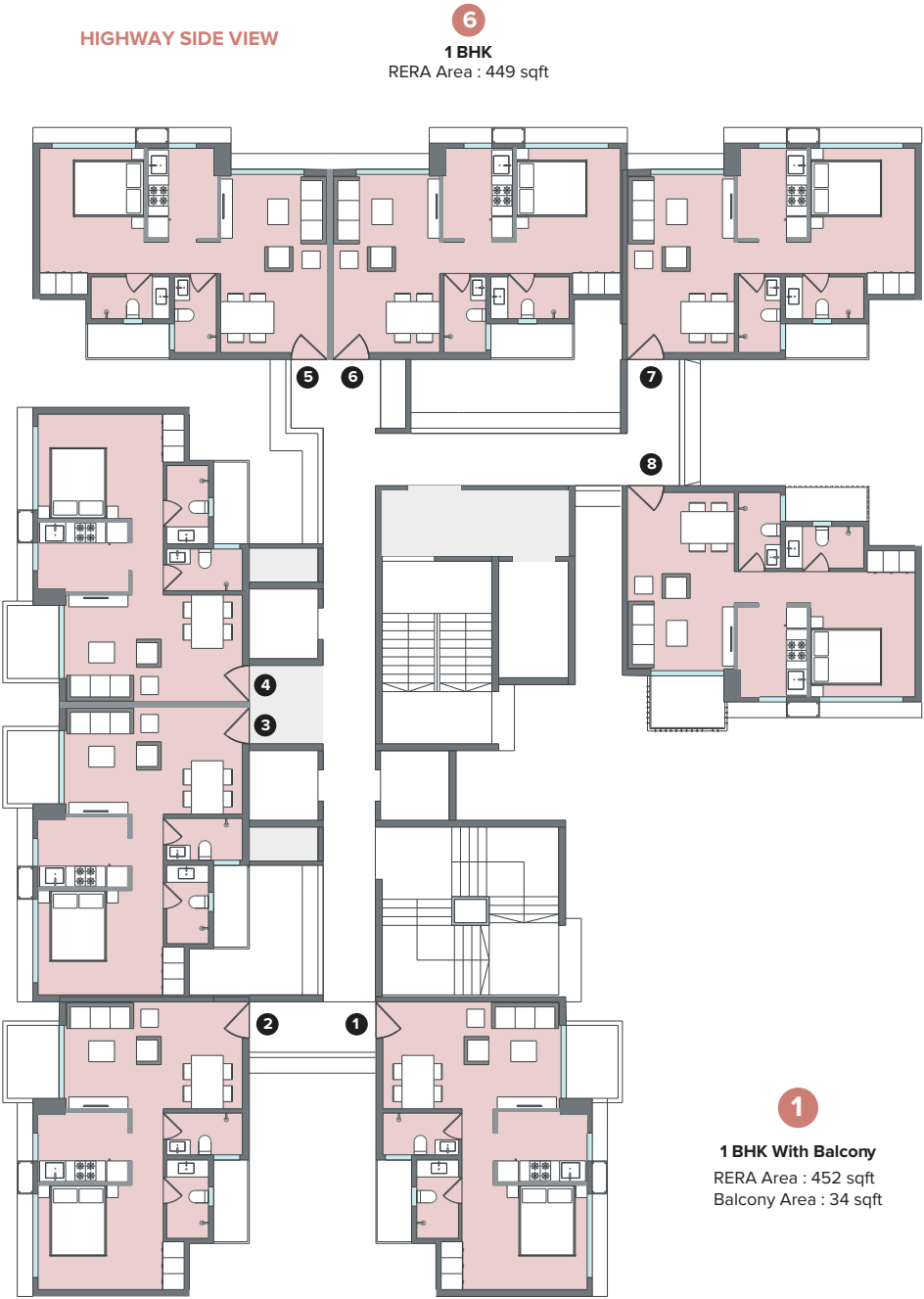
1st to 33rd Floor

Typical Floor Plan

RIVER SIDE VIEW

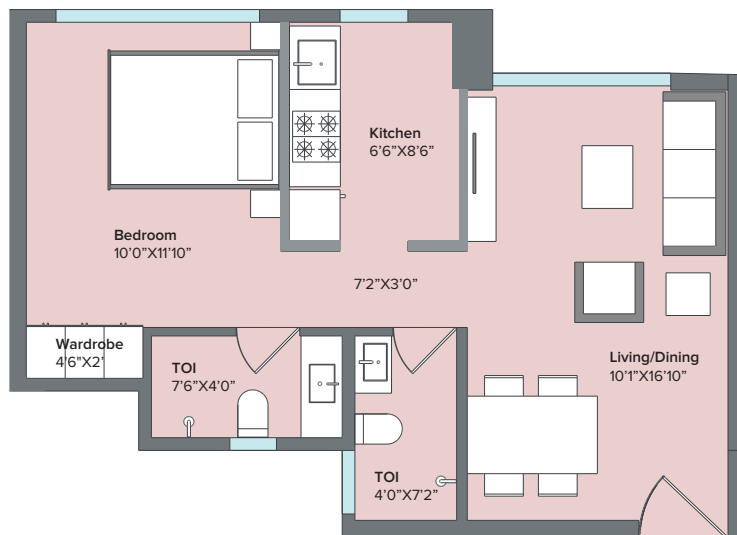
HIGHWAY SIDE VIEW

GARDEN SIDE VIEW



Floors 8, 12, 18, 23, 28, 33 are refuge floors and the following flats are not available for sale:  
Flat no. 7 is not available for sale  
Flats 5 & 6 have been combined to make a 2.5 BHK

RERA Application Id: REA52000063451/ REA52000063452  
Disclaimer: The floor plans are as per the approved plans and specifications as of date. These plans may vary by +/- 3% and are subject to changes. The furniture, accessories, etc. shown in the plans does not form a part of the offering. Customers are requested to visit the site office and apprise themselves of all the necessary details prior to making any purchase decisions.  
\*Areas mentioned are RERA carpet area+ Enclosed balcony area



## 1 BHK

RERA Area : 449 sqft



This configuration is available in flat numbers 2, 3 & 4 in Daffodil and flat numbers 5, 6 & 7 in Cedar

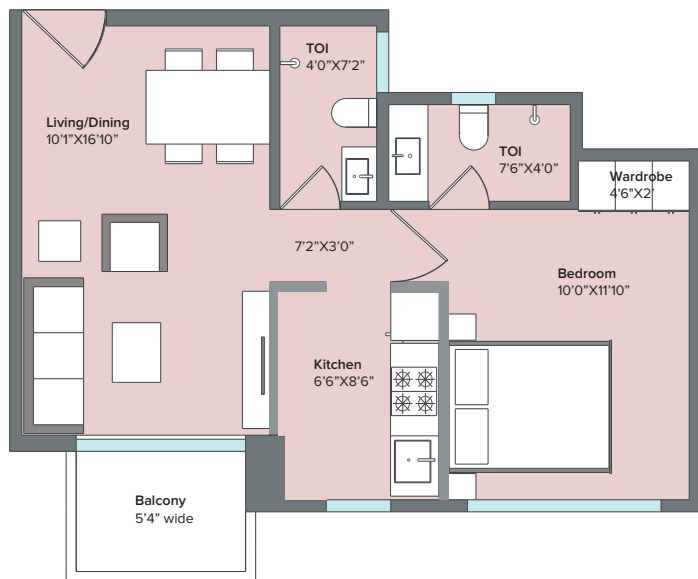
## 1 BHK With Balcony

RERA Area : 452 sqft

Balcony Area : 34 sqft



This configuration is available in flat numbers 1, 7 & 8 in Daffodil and flat numbers 1, 2, 3, 4 & 8 in Cedar

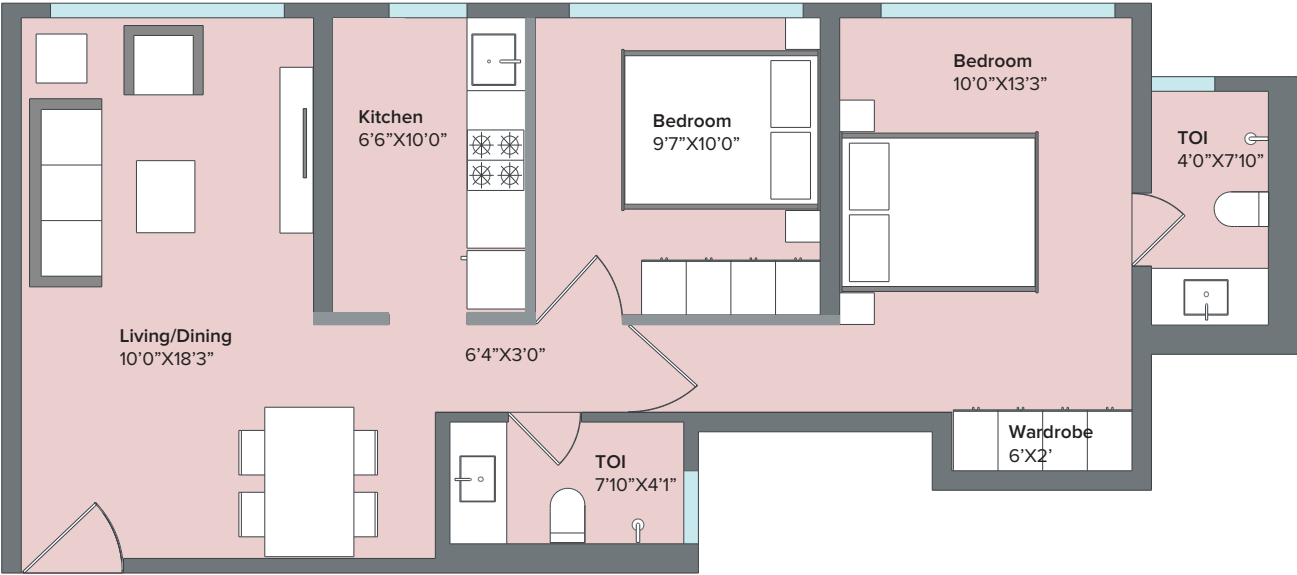


RERA Application Id: REA52000063453/ REA52000063455/ REA52000063451/ REA52000063452

Disclaimer: The floor plans are as per the approved plans and specifications as of date. These plans may vary +/- 3% and are subject to changes. The furniture, accessories, etc. shown in the plans does not form a part of the offering. customers are requested to visit the site office and apprise themselves of all the necessary details prior to making any purchase decisions. \*Areas mentioned are RERA carpet area+ Enclosed balcony area

# 2 BHK

RERA Area : 664 sqft



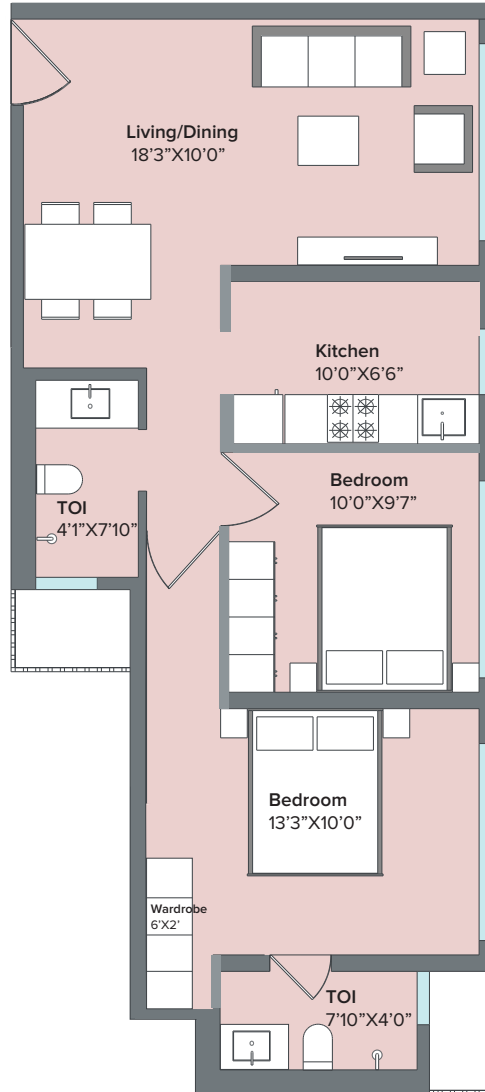
This configuration is available in flat numbers 5 in Daffodil

RERA Application Id: REA52000063453/ REA52000063455

Disclaimer: The floor plans are as per the approved plans and specifications as of date. These plans may vary by +/- 3% and are subject to changes. The furniture, accessories, etc. shown in the plans does not form a part of the offering. Customers are requested to visit the site office and apprise themselves of all the necessary details prior to making any purchase decisions.  
\*Areas mentioned are RERA carpet area+ Enclosed balcony area

## 2 BHK

RERA Area : 652 sqft



This configuration is available in flat numbers 6 in Daffodil

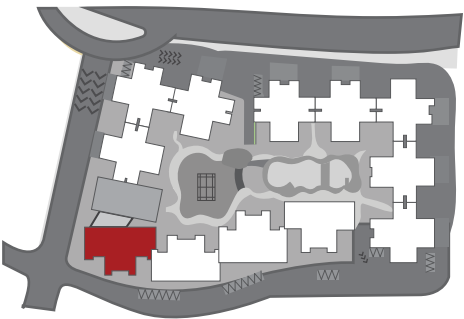
RERA Application Id: REA52000063453/ REA52000063455

Disclaimer: The floor plans are as per the approved plans and specifications as of date. These plans may vary by +/- 3% and are subject to changes. The furniture, accessories, etc. shown in the plans does not form a part of the offering. Customers are requested to visit the site office and apprise themselves of all the necessary details prior to making any purchase decisions.

\*Areas mentioned are RERA carpet area+ Enclosed balcony area

# TRITON - 1 & 2

## Typical Floor Plan With Terrace



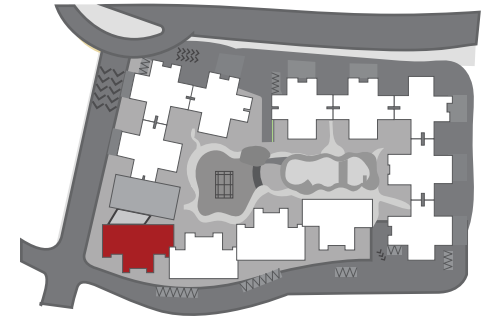
TRITON-1 (2 Basements + 1st to 16th Floors): Maha RERA: P52000000663 | TRITON-2 (Stilt + Podium + 17th to 30th Floors): Maha RERA: P52000000668

All RERA related details are available at <https://maharera.mahaonline.gov.in/> as well as our website [marathon.in/nexzone](https://marathon.in/nexzone). Customers are requested to visit the said link for details and update themselves with all the necessary details in respect of the project from time to time. The floor plans are as per the approved plans and specifications as on date. These plans may vary by +/- 3% and are subject to changes. The furniture, accessories, etc. shown in the plans does not form a part of the offering. Customers are requested to visit the site office and apprise themselves of all the necessary details prior to making any purchase decisions.



# TRITON - 1 & 2

## Typical Floor Plan Without Terrace



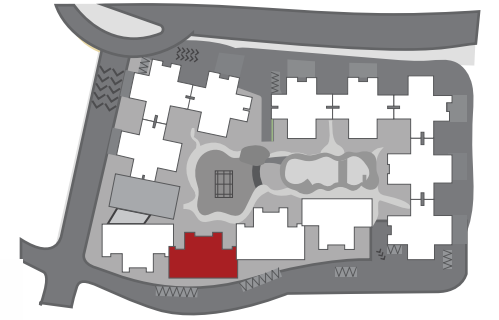
TRITON-1 (2 Basements + 1st to 16th Floors): Maha RERA: P52000000663 | TRITON-2 (Stilt + Podium + 17th to 30th Floors): Maha RERA: P52000000668

All RERA related details are available at <https://maharera.mahaonline.gov.in/> as well as our website [marathon.in/nexzone](https://marathon.in/nexzone). Customers are requested to visit the said link for details and update themselves with all the necessary details in respect of the project from time to time. The floor plans are as per the approved plans and specifications as on date. These plans may vary by +/- 3% and are subject to changes. The furniture, accessories, etc. shown in the plans does not form a part of the offering. Customers are requested to visit the site office and apprise themselves of all the necessary details prior to making any purchase decisions.



# ANTILIA - 1 & 2

## Typical Floor Plan With Terrace

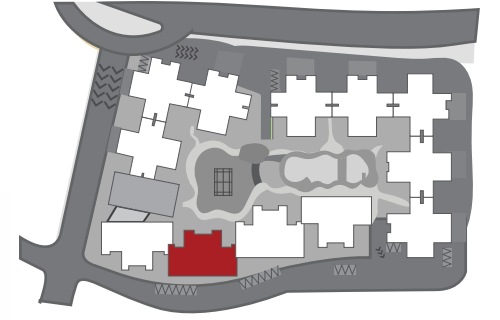


ANTILIA-1 (2 Basements + 1st to 16th Floors): Maha RERA: P52000000666 | ANTILIA-2 (Stilt + Podium + 17th to 30th Floors): Maha RERA: P52000000671

All RERA related details are available at <https://maharera.mahaonline.gov.in/> as well as our website [marathon.in/nexzone](https://marathon.in/nexzone). Customers are requested to visit the said link for details and update themselves with all the necessary details in respect of the project from time to time. The floor plans are as per the approved plans and specifications as on date. These plans may vary by +/- 3% and are subject to changes. The furniture, accessories, etc. shown in the plans does not form a part of the offering. Customers are requested to visit the site office and apprise themselves of all the necessary details prior to making any purchase decisions.

# ANTILIA - 1 & 2

## Typical Floor Plan Without Terrace



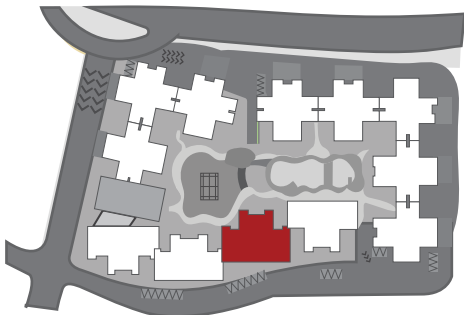
ANTILIA-1 (2 Basements + 1st to 16th Floors): Maha RERA: P52000000666 | ANTILIA-2 (Stilt + Podium + 17th to 30th Floors): Maha RERA: P52000000671

All RERA related details are available at <https://maharera.mahaonline.gov.in/> as well as our website [marathon.in/nexzone](https://marathon.in/nexzone). Customers are requested to visit the said link for details and update themselves with all the necessary details in respect of the project from time to time. The floor plans are as per the approved plans and specifications as on date. These plans may vary by +/- 3% and are subject to changes. The furniture, accessories, etc. shown in the plans does not form a part of the offering. Customers are requested to visit the site office and apprise themselves of all the necessary details prior to making any purchase decisions.



# VEGA - 1 & 2

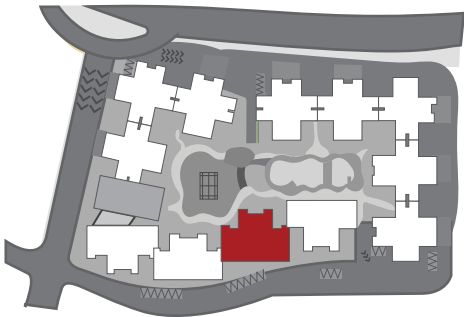
## Typical Floor Plan With Terrace





# VEGA - 1 & 2

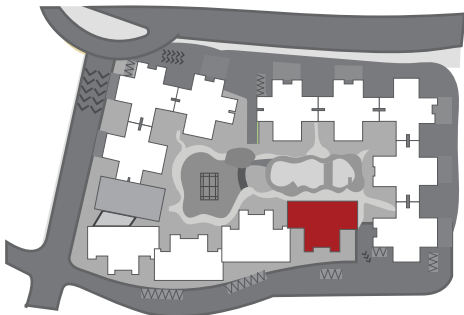
## Typical Floor Plan Without Terrace





# ION - 1 & 2

## Typical Floor Plan With Terrace



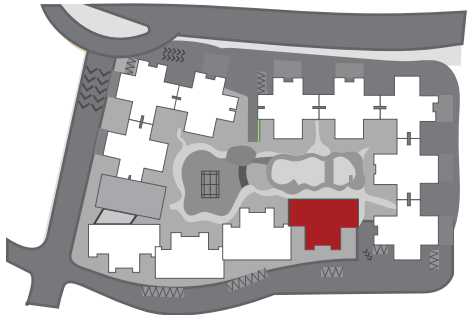
ION-1 (2 Basements + 1st to 24th Floors): Maha RERA: P52000000660 | ION-2 (Stilt + Podium + 25th to 31st Floors): Maha RERA: P52000000664

All RERA related details are available at <https://maharera.mahaonline.gov.in/> as well as our website [marathon.in/nexzone](https://marathon.in/nexzone). Customers are requested to visit the said link for details and update themselves with all the necessary details in respect of the project from time to time. The floor plans are as per the approved plans and specifications as on date. These plans may vary by +/- 3% and are subject to changes. The furniture, accessories, etc. shown in the plans does not form a part of the offering. Customers are requested to visit the site office and apprise themselves of all the necessary details prior to making any purchase decisions.



# ION - 1 & 2

## Typical Floor Plan Without Terrace



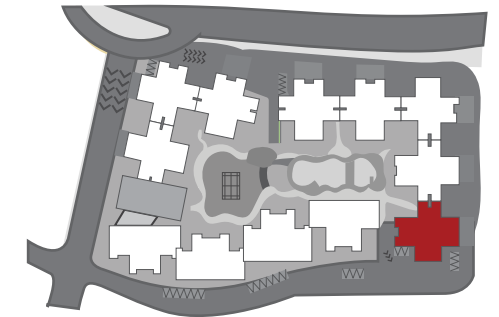
ION-1 (2 Basements + 1st to 24th Floors): Maha RERA: P52000000660 | ION-2 (Stilt + Podium + 25th to 31st Floors): Maha RERA: P52000000664

All RERA related details are available at <https://maharera.mahaonline.gov.in/> as well as our website [marathon.in/nexzone](https://marathon.in/nexzone). Customers are requested to visit the said link for details and update themselves with all the necessary details in respect of the project from time to time. The floor plans are as per the approved plans and specifications as on date. These plans may vary by +/- 3% and are subject to changes. The furniture, accessories, etc. shown in the plans does not form a part of the offering. Customers are requested to visit the site office and apprise themselves of all the necessary details prior to making any purchase decisions.



# ZODIAC - 1 & 2

## Typical Floor Plan



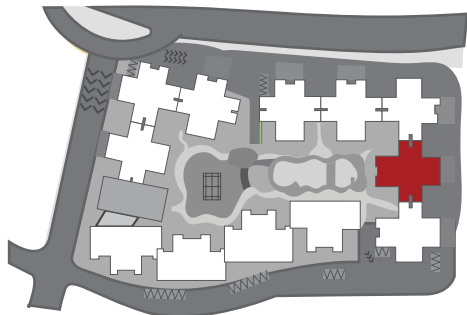
**ZODIAC-1** (2 Basements + 1st to 24th Floors): Maha RERA: P52000000547 | **ZODIAC-2** (Stilt + Podium + 25th to 32nd Floors): Maha RERA: P52000000661

All RERA related details are available at <https://maharera.mahaonline.gov.in/> as well as our website [marathon.in/nexzone](http://marathon.in/nexzone). Customers are requested to visit the said link for details and update themselves with all the necessary details in respect of the project from time to time. The floor plans are as per the approved plans and specifications as on date. These plans may vary by +/- 3% and are subject to changes. The furniture, accessories, etc. shown in the plans does not form a part of the offering. Customers are requested to visit the site office and apprise themselves of all the necessary details prior to making any purchase decisions.



# ZENITH - 1 & 2

## Typical Floor Plan

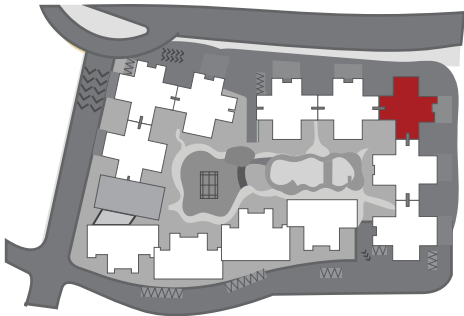


ZENITH-1 (2 Basements + 1st to 24th Floors): Maha RERA: P52000000658 | ZENITH-2 (Stillt + Podium + 25th to 32nd Floors): Maha RERA: P52000000667

All RERA related details are available at <https://maharera.mahaonline.gov.in/> as well as our website [marathon.in/nexzone](https://marathon.in/nexzone). Customers are requested to visit the said link for details and update themselves with all the necessary details in respect of the project from time to time. The floor plans are as per the approved plans and specifications as on date. These plans may vary by +/- 3% and are subject to changes. The furniture, accessories, etc. shown in the plans does not form a part of the offering. Customers are requested to visit the site office and apprise themselves of all the necessary details prior to making any purchase decisions.

# ALTIS - 1 & 2

## Typical Floor Plan



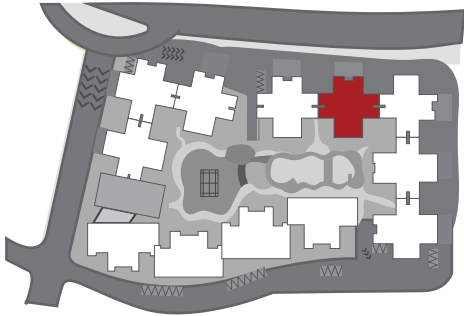
ALTIS-1 (2 Basements + 1st to 24th Floors): Maha RERA: P52000000573 | ALTIS-2 (Stilt + Podium + 25th to 30th Floors): Maha RERA: P52000000677

All RERA related details are available at <https://maharera.mahaonline.gov.in/> as well as our website [marathon.in/nexzone](https://marathon.in/nexzone). Customers are requested to visit the said link for details and update themselves with all the necessary details in respect of the project from time to time. The floor plans are as per the approved plans and specifications as on date. These plans may vary by +/- 3% and are subject to changes. The furniture, accessories, etc. shown in the plans does not form a part of the offering. Customers are requested to visit the site office and apprise themselves of all the necessary details prior to making any purchase decisions.



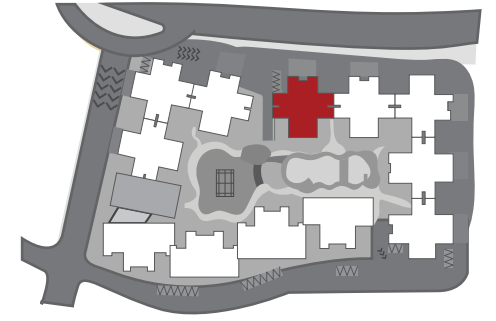
# AVIOR - 1 & 2

## Typical Floor Plan



## ACRUX - 1 & 2

### Typical Floor Plan

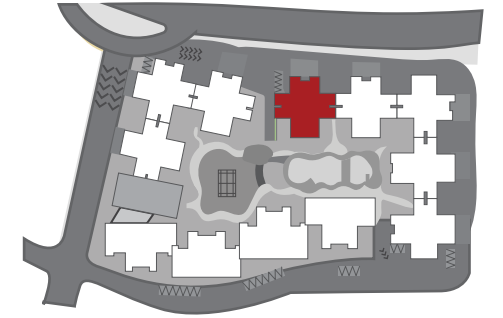


**ACRUX-1** (2 Basements + 1st to 24th Floors): Maha RERA: P52000000670 | **ACRUX-2** (Stilt + Podium + 25th to 31st Floors): Maha RERA: P52000001062

All RERA related details are available at <https://maharera.mahaonline.gov.in/> as well as our website [marathon.in/nexzone](http://marathon.in/nexzone). Customers are requested to visit the said link for details and update themselves with all the necessary details in respect of the project from time to time. The floor plans are as per the approved plans and specifications as on date. These plans may vary by +/- 3% and are subject to changes. The furniture, accessories, etc. shown in the plans does not form a part of the offering. Customers are requested to visit the site office and apprise themselves of all the necessary details prior to making any purchase decisions.



Floors 28 - 31



**ACRUX-1** (2 Basements + 1st to 24th Floors): Maha RERA: P52000000670 | **ACRUX-2** (Stilt + Podium + 25th to 31st Floors): Maha RERA: P52000001062

All RERA related details are available at <https://maharera.mahaonline.gov.in/> as well as our website [marathon.in/nexzone](http://marathon.in/nexzone). Customers are requested to visit the said link for details and update themselves with all the necessary details in respect of the project from time to time. The floor plans are as per the approved plans and specifications as on date. These plans may vary by +/- 3% and are subject to changes. The furniture, accessories, etc. shown in the plans does not form a part of the offering. Customers are requested to visit the site office and apprise themselves of all the necessary details prior to making any purchase decisions.

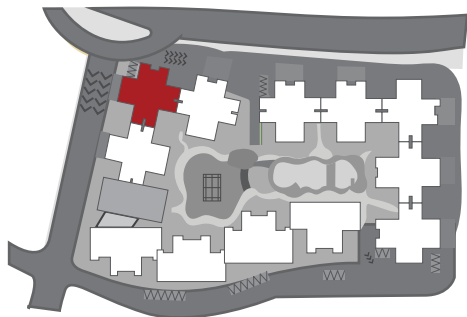
# ATRIA - 1 & 2 Typical Floor Plan





# ATLAS - 1 & 2

## Typical Floor Plan



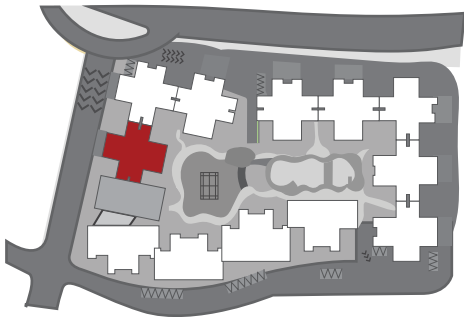
ATLAS-1 (2 Basements + 1st to 24th Floors): Maha RERA: P52000000662 | ATLAS-2 (Stilt + Podium + 25th to 30th Floors): Maha RERA: P52000000472

All RERA related details are available at <https://maharera.mahaonline.gov.in/> as well as our website [marathon.in/nexzone](https://marathon.in/nexzone). Customers are requested to visit the said link for details and update themselves with all the necessary details in respect of the project from time to time. The floor plans are as per the approved plans and specifications as on date. These plans may vary by +/- 3% and are subject to changes. The furniture, accessories, etc. shown in the plans does not form a part of the offering. Customers are requested to visit the site office and apprise themselves of all the necessary details prior to making any purchase decisions.



# AURA - 1 & 2

## Typical Floor Plan



AURA-1 (2 Basements + 1st to 24th Floors): Maha RERA: P52000000665 | AURA-2 (Stilt + Podium + 25th to 30th Floors): Maha RERA: P52000000669

All RERA related details are available at <https://maharera.mahaonline.gov.in/> as well as our website [marathon.in/nexzone](https://marathon.in/nexzone). Customers are requested to visit the said link for details and update themselves with all the necessary details in respect of the project from time to time. The floor plans are as per the approved plans and specifications as on date. These plans may vary by +/- 3% and are subject to changes. The furniture, accessories, etc. shown in the plans does not form a part of the offering. Customers are requested to visit the site office and apprise themselves of all the necessary details prior to making any purchase decisions.