

MARATHON Nexzone Panvel

Site & Sales Office:

Marathon Nexzone, National Highway, 4B-JNPT Highway,
Near Palaspe Phata, Panvel, Mumbai, Maharashtra 410206

T : 7671900900 | **W** : marathon.in/nexzone

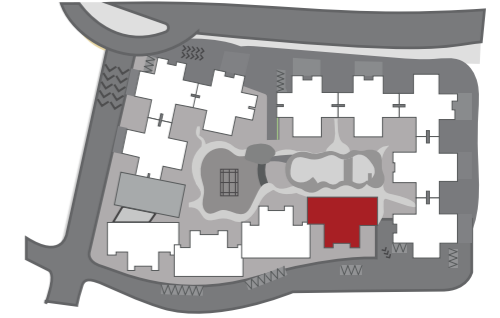


Phase I

Plans

ION - 1 & 2

Typical Floor Plan With Terrace



4 RERA: 658 Sq. Ft.
MOFA: 686 Sq. Ft.

5 RERA: 745 Sq. Ft.
MOFA: 749 Sq. Ft.

6 RERA: 745 Sq. Ft.
MOFA: 749 Sq. Ft.

7 RERA: 658 Sq. Ft.
MOFA: 686 Sq. Ft.

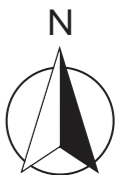


3 RERA: 643 Sq. Ft.
MOFA: 639 Sq. Ft.

8 RERA: 643 Sq. Ft.
MOFA: 639 Sq. Ft.

2 RERA: 913 Sq. Ft.
MOFA: 829 Sq. Ft.

1 RERA: 913 Sq. Ft.
MOFA: 829 Sq. Ft.

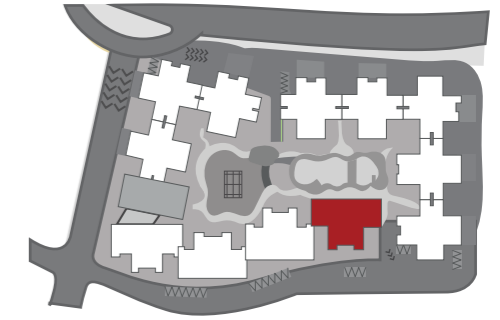


ION-1 (2 Basements + 1st to 24th Floors): Maha RERA: P52000000660 | ION-2 (Stilt + Podium + 25th to 30th Floors): Maha RERA: P52000000664

All RERA related details are available at <https://maharera.mahaonline.gov.in/> as well as our website marathon.in/nexzone. Customers are requested to visit the said link for details and update themselves with all the necessary details in respect of the project from time to time. The floor plans are as per the approved plans and specifications as on date. These plans may vary by +/- 3% and are subject to changes. The furniture, accessories, etc. shown in the plans does not form a part of the offering. Customers are requested to visit the site office and apprise themselves of all the necessary details prior to making any purchase decisions.

ION - 1 & 2

Typical Floor Plan Without Terrace



4 RERA: 658 Sq. Ft.
MOFA: 688 Sq. Ft.

5 RERA: 736 Sq. Ft.
MOFA: 749 Sq. Ft.

6 RERA: 736 Sq. Ft.
MOFA: 749 Sq. Ft.

7 RERA: 658 Sq. Ft.
MOFA: 686 Sq. Ft.



3 RERA: 643 Sq. Ft.
MOFA: 639 Sq. Ft.

8 RERA: 643 Sq. Ft.
MOFA: 639 Sq. Ft.

2 RERA: 903 Sq. Ft.
MOFA: 829 Sq. Ft.

1 RERA: 903 Sq. Ft.
MOFA: 829 Sq. Ft.

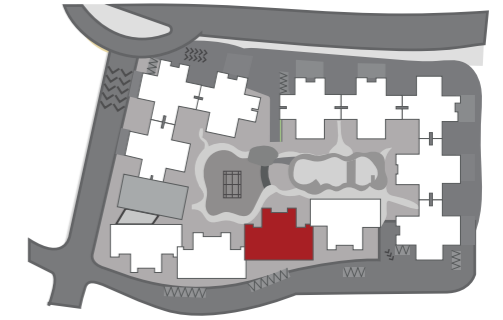


ION-1 (2 Basements + 1st to 24th Floors): Maha RERA: P52000000660 | ION-2 (Stilt + Podium + 25th to 30th Floors): Maha RERA: P52000000664

All RERA related details are available at <https://maharera.mahaonline.gov.in/> as well as our website marathon.in/nexzone. Customers are requested to visit the said link for details and update themselves with all the necessary details in respect of the project from time to time. The floor plans are as per the approved plans and specifications as on date. These plans may vary by +/- 3% and are subject to changes. The furniture, accessories, etc. shown in the plans does not form a part of the offering. Customers are requested to visit the site office and apprise themselves of all the necessary details prior to making any purchase decisions.

VEGA - 1 & 2

Typical Floor Plan With Terrace



1 RERA: 913 Sq. Ft.
MOFA: 829 Sq. Ft.

2 RERA: 913 Sq. Ft.
MOFA: 829 Sq. Ft.

8 RERA: 643 Sq. Ft.
MOFA: 639 Sq. Ft.

3 RERA: 643 Sq. Ft.
MOFA: 639 Sq. Ft.



7 RERA: 658 Sq. Ft.
MOFA: 686 Sq. Ft.

6 RERA: 745 Sq. Ft.
MOFA: 749 Sq. Ft.

5 RERA: 745 Sq. Ft.
MOFA: 749 Sq. Ft.

4 RERA: 658 Sq. Ft.
MOFA: 686 Sq. Ft.

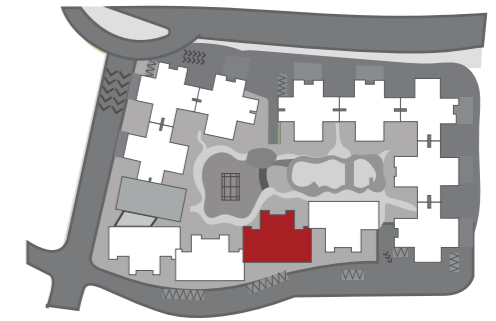


VEGA-1 (2 Basements + 1st to 16th Floors): Maha RERA: P52000000674 | VEGA-2 (Stilt + Podium + 17th to 30th Floors): Maha RERA: P52000000522

All RERA related details are available at <https://maharera.mahaonline.gov.in/> as well as our website marathon.in/nexzone. Customers are requested to visit the said link for details and update themselves with all the necessary details in respect of the project from time to time. The floor plans are as per the approved plans and specifications as on date. These plans may vary by +/- 3% and are subject to changes. The furniture, accessories, etc. shown in the plans does not form a part of the offering. Customers are requested to visit the site office and apprise themselves of all the necessary details prior to making any purchase decisions.

VEGA - 1 & 2

Typical Floor Plan Without Terrace

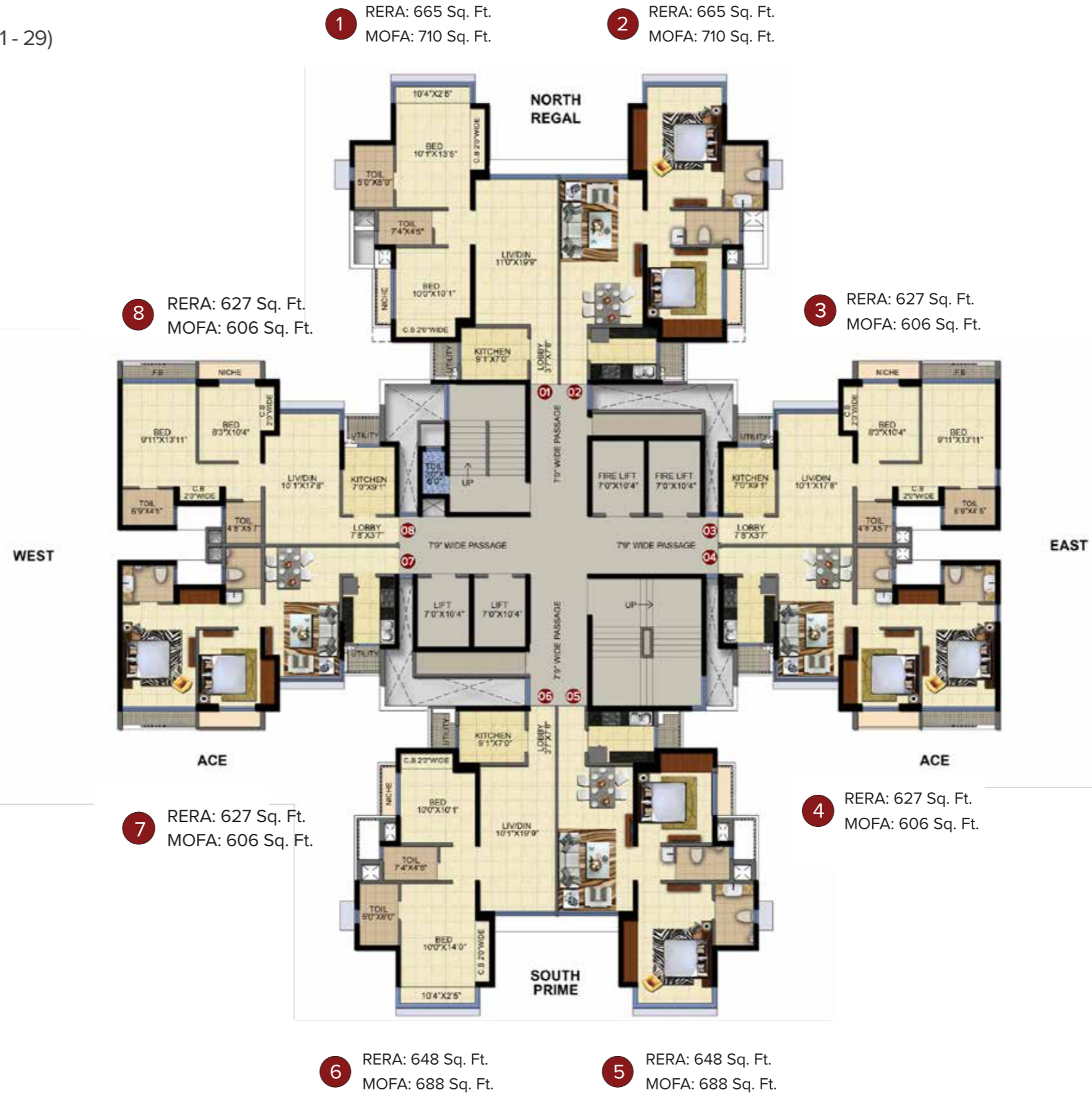
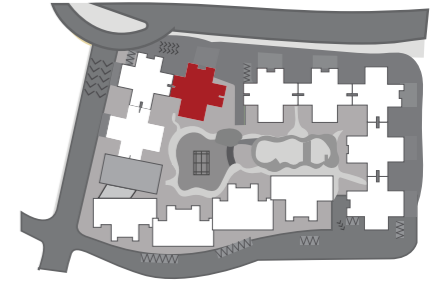


VEGA-1 (2 Basements + 1st to 16th Floors): Maha RERA: P52000000674 | VEGA-2 (Stilt + Podium + 17th to 30th Floors): Maha RERA: P52000000522

All RERA related details are available at <https://maharera.mahaonline.gov.in/> as well as our website marathon.in/nexzone. Customers are requested to visit the said link for details and update themselves with all the necessary details in respect of the project from time to time. The floor plans are as per the approved plans and specifications as on date. These plans may vary by +/- 3% and are subject to changes. The furniture, accessories, etc. shown in the plans does not form a part of the offering. Customers are requested to visit the site office and apprise themselves of all the necessary details prior to making any purchase decisions.

ATRIA - 1 & 2

Typical Floor Plan (Floors 1 - 29)

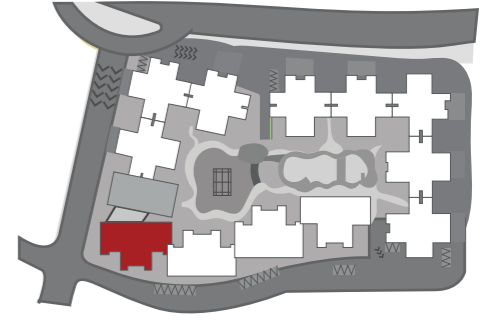


ATRIA-1 (2 Basements + 1st to 16th Floors): Maha RERA: P52000001047 | ATRIA-2 (Stilt + Podium + 17th to 29th Floors): Maha RERA: P52000000495

All RERA related details are available at <https://maharera.mahaonline.gov.in/> as well as our website marathon.in/nexzone. Customers are requested to visit the said link for details and update themselves with all the necessary details in respect of the project from time to time. The floor plans are as per the approved plans and specifications as on date. These plans may vary by +/- 3% and are subject to changes. The furniture, accessories, etc. shown in the plans does not form a part of the offering. Customers are requested to visit the site office and apprise themselves of all the necessary details prior to making any purchase decisions.

TRITON - 1 & 2

Typical Floor Plan With Terrace

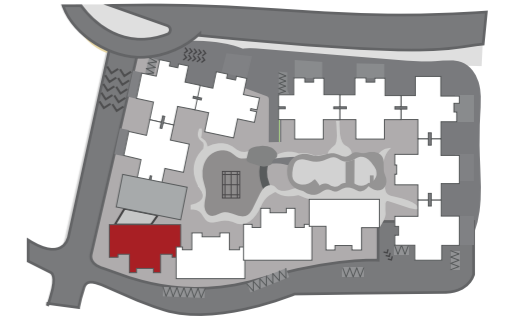


TRITON-1 (2 Basements + 1st to 16th Floors): Maha RERA: P52000000663 | TRITON-2 (Stilt + Podium + 17th to 29th Floors): Maha RERA: P52000000668

All RERA related details are available at <https://maharera.mahaonline.gov.in/> as well as our website marathon.in/nexzone. Customers are requested to visit the said link for details and update themselves with all the necessary details in respect of the project from time to time. The floor plans are as per the approved plans and specifications as on date. These plans may vary by +/- 3% and are subject to changes. The furniture, accessories, etc. shown in the plans does not form a part of the offering. Customers are requested to visit the site office and apprise themselves of all the necessary details prior to making any purchase decisions.

TRITON - 1 & 2

Typical Floor Plan Without Terrace



4 RERA: 658 Sq. Ft.
MOFA: 683 Sq. Ft.

5 RERA: 736 Sq. Ft.
MOFA: 749 Sq. Ft.

6 RERA: 736 Sq. Ft.
MOFA: 749 Sq. Ft.

7 RERA: 658 Sq. Ft.
MOFA: 683 Sq. Ft.



3 RERA: 643 Sq. Ft.
MOFA: 639 Sq. Ft.

8 RERA: 643 Sq. Ft.
MOFA: 639 Sq. Ft.

2 RERA: 903 Sq. Ft.
MOFA: 859 Sq. Ft.

1 RERA: 903 Sq. Ft.
MOFA: 859 Sq. Ft.

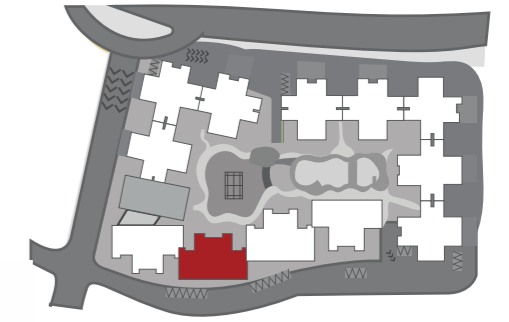


TRITON-1 (2 Basements + 1st to 16th Floors): Maha RERA: P52000000663 | TRITON-2 (Still + Podium + 17th to 29th Floors): Maha RERA: P52000000668

All RERA related details are available at <https://maharera.mahaonline.gov.in/> as well as our website marathon.in/nexzone. Customers are requested to visit the said link for details and update themselves with all the necessary details in respect of the project from time to time. The floor plans are as per the approved plans and specifications as on date. These plans may vary by +/- 3% and are subject to changes. The furniture, accessories, etc. shown in the plans does not form a part of the offering. Customers are requested to visit the site office and apprise themselves of all the necessary details prior to making any purchase decisions.

ANTILIA - 1 & 2

Typical Floor Plan With Terrace



1 RERA: 913 Sq. Ft.
MOFA: 859 Sq. Ft.

2 RERA: 913 Sq. Ft.
MOFA: 859 Sq. Ft.

8 RERA: 643 Sq. Ft.
MOFA: 639 Sq. Ft.

3 RERA: 643 Sq. Ft.
MOFA: 639 Sq. Ft.



7 RERA: 658 Sq. Ft.
MOFA: 683 Sq. Ft.

6 RERA: 745 Sq. Ft.
MOFA: 749 Sq. Ft.

5 RERA: 745 Sq. Ft.
MOFA: 749 Sq. Ft.

4 RERA: 658 Sq. Ft.
MOFA: 683 Sq. Ft.

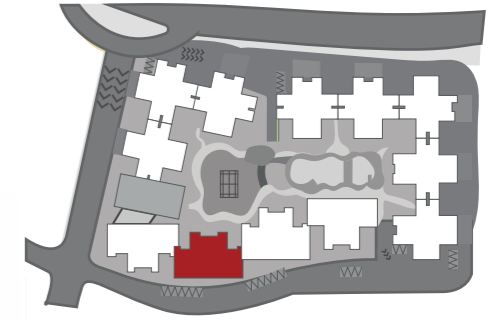


ANTILIA-1 (2 Basements + 1st to 16th Floors): Maha RERA: P52000000666 | ANTILIA-2 (Stilt + Podium + 17th to 29th Floors): Maha RERA: P52000000671

All RERA related details are available at <https://maharera.mahaonline.gov.in/> as well as our website marathon.in/nexzone. Customers are requested to visit the said link for details and update themselves with all the necessary details in respect of the project from time to time. The floor plans are as per the approved plans and specifications as on date. These plans may vary by +/- 3% and are subject to changes. The furniture, accessories, etc. shown in the plans does not form a part of the offering. Customers are requested to visit the site office and apprise themselves of all the necessary details prior to making any purchase decisions.

ANTILIA - 1 & 2

Typical Floor Plan Without Terrace

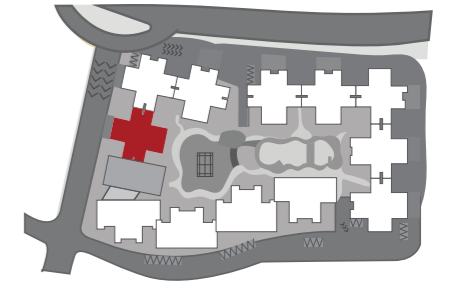


ANTILIA-1 (2 Basements + 1st to 16th Floors): Maha RERA: P52000000666 | ANTILIA-2 (Stilt + Podium + 17th to 29th Floors): Maha RERA: P52000000671

All RERA related details are available at <https://maharera.mahaonline.gov.in/> as well as our website marathon.in/nexzone. Customers are requested to visit the said link for details and update themselves with all the necessary details in respect of the project from time to time. The floor plans are as per the approved plans and specifications as on date. These plans may vary by +/- 3% and are subject to changes. The furniture, accessories, etc. shown in the plans does not form a part of the offering. Customers are requested to visit the site office and apprise themselves of all the necessary details prior to making any purchase decisions.

AURA - 1 & 2

Typical Floor Plan (Floors 1 - 29)

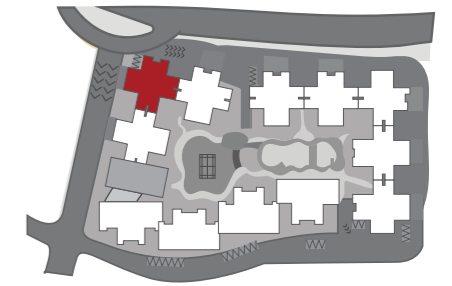


AURA-1 (2 Basements + 1st to 24th Floors): Maha RERA: P52000000665 | AURA-2 (Stilt + Podium + 25th to 29th Floors): Maha RERA: P52000000669

All RERA related details are available at <https://maharera.mahaonline.gov.in/> as well as our website marathon.in/nexzone. Customers are requested to visit the said link for details and update themselves with all the necessary details in respect of the project from time to time. The floor plans are as per the approved plans and specifications as on date. These plans may vary by +/- 3% and are subject to changes. The furniture, accessories, etc. shown in the plans does not form a part of the offering. Customers are requested to visit the site office and apprise themselves of all the necessary details prior to making any purchase decisions.

ATLAS - 1 & 2

Typical Floor Plan (Floors 1 - 29)

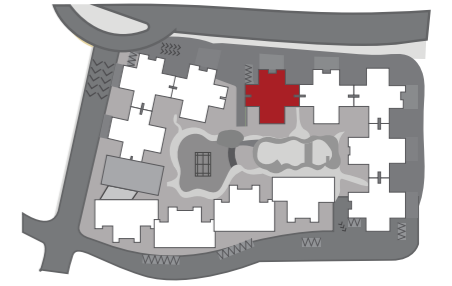


ATLAS-1 (2 Basements + 1st to 24th Floors): Maha RERA: P52000000662 | ATLAS-2 (Stilt + Podium + 25th to 29th Floors): Maha RERA: P52000000472

All RERA related details are available at <https://maharera.mahaonline.gov.in/> as well as our website marathon.in/nexzone. Customers are requested to visit the said link for details and update themselves with all the necessary details in respect of the project from time to time. The floor plans are as per the approved plans and specifications as on date. These plans may vary by +/- 3% and are subject to changes. The furniture, accessories, etc. shown in the plans does not form a part of the offering. Customers are requested to visit the site office and apprise themselves of all the necessary details prior to making any purchase decisions.

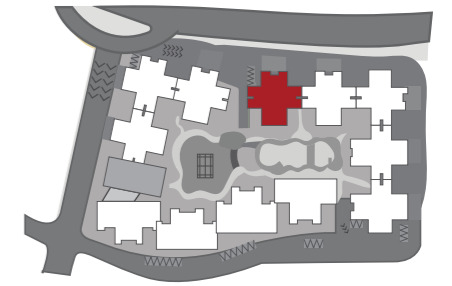
ACRUX - 1 & 2

Typical Floor Plan (Floors 1 - 27)



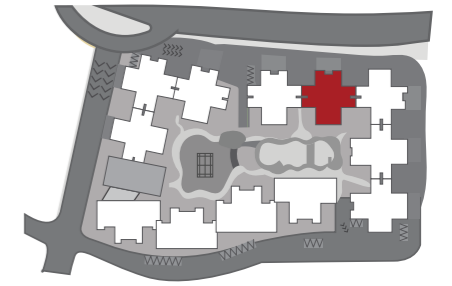
ACRUX - 2

Typical Floor Plan (Floors 28 - 30)



AVIOR - 1 & 2

Typical Floor Plan (Floors 1 - 27)

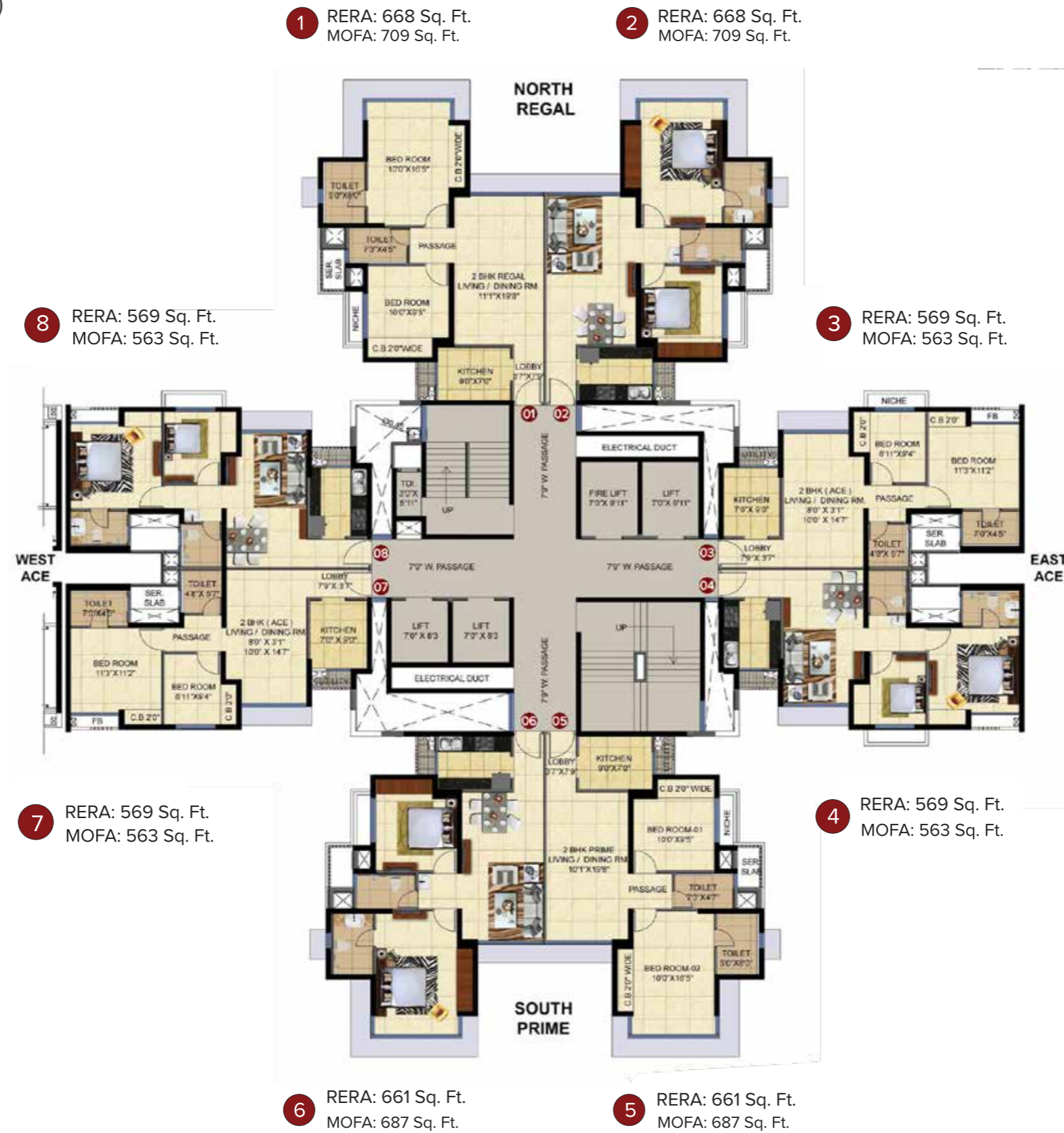
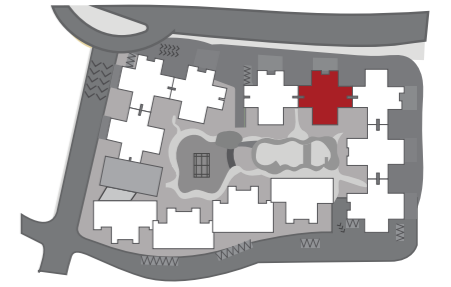


AVIOR-1 (2 Basements + 1st to 24th Floors): Maha RERA: P52000000502 | AVIOR-2 (Stilt + Podium + 25th to 30th Floors): Maha RERA: P52000000713

All RERA related details are available at <https://maharera.mahaonline.gov.in/> as well as our website marathon.in/nexzone. Customers are requested to visit the said link for details and update themselves with all the necessary details in respect of the project from time to time. The floor plans are as per the approved plans and specifications as on date. These plans may vary by +/- 3% and are subject to changes. The furniture, accessories, etc. shown in the plans does not form a part of the offering. Customers are requested to visit the site office and apprise themselves of all the necessary details prior to making any purchase decisions.

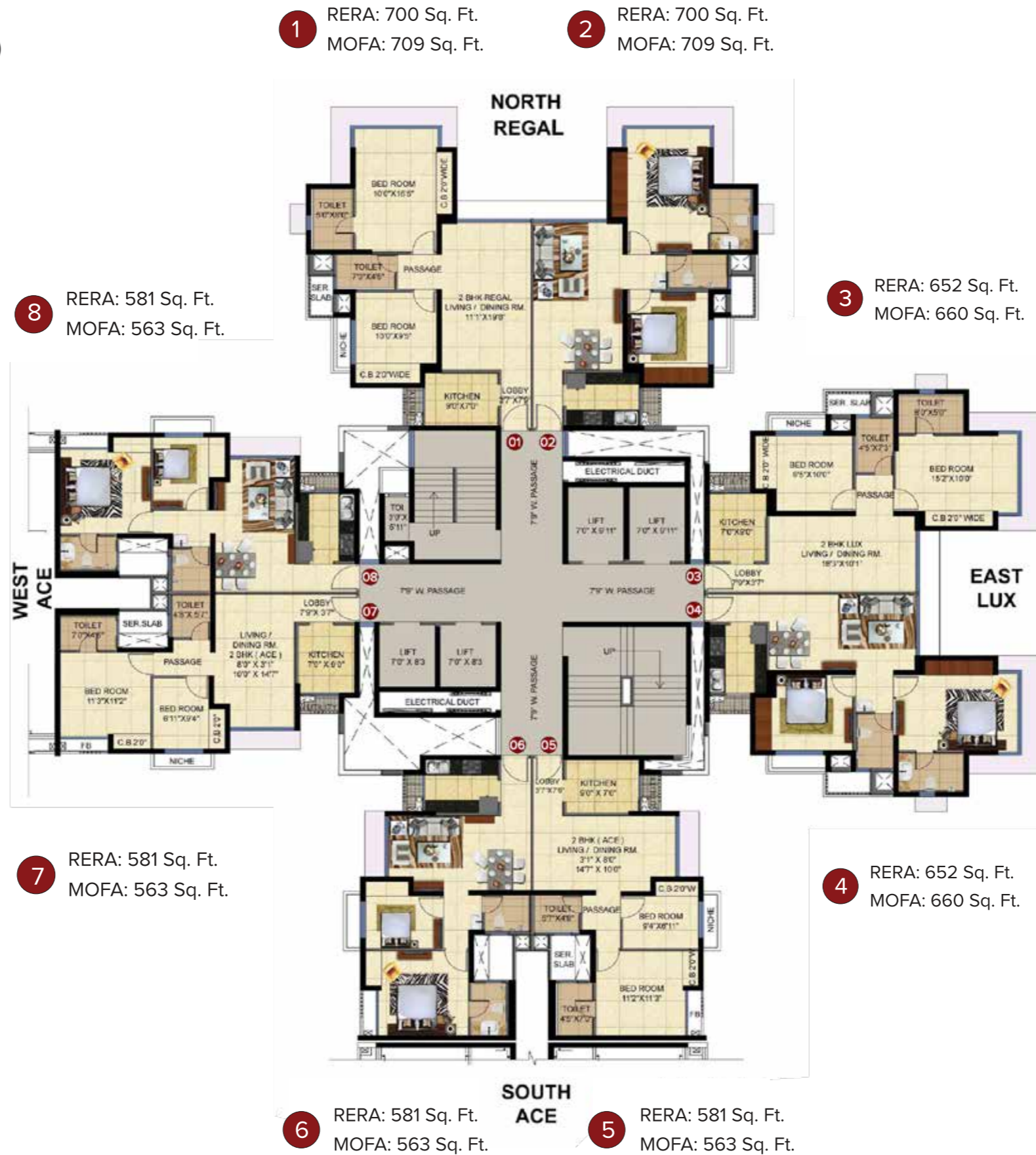
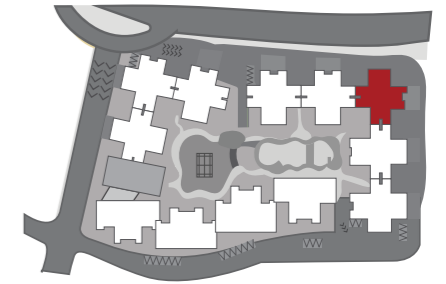
AVIOR - 2

Typical Floor Plan (Floors 28 - 30)



ALTIS - 1 & 2

Typical Floor Plan (Floors 1 - 27)

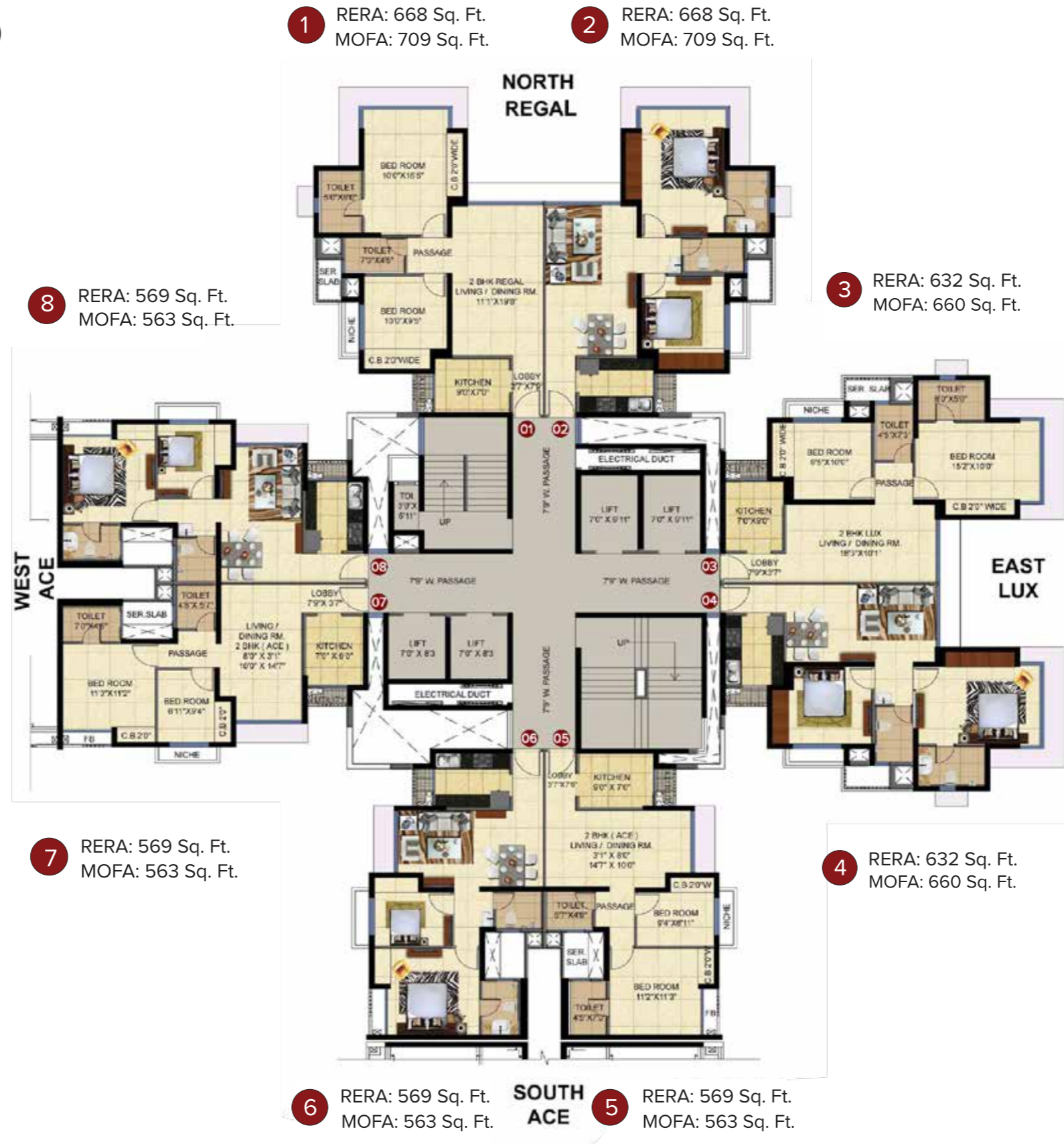
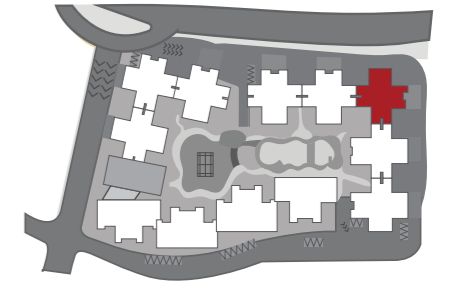


ALTIS-1 (2 Basements + 1st to 24th Floors): Maha RERA: P52000000573 | ALTIS-2 (Stilt + Podium + 25th to 31st Floors): Maha RERA: P52000000677

All RERA related details are available at <https://maharera.mahaonline.gov.in/> as well as our website marathon.in/nexzone. Customers are requested to visit the said link for details and update themselves with all the necessary details in respect of the project from time to time. The floor plans are as per the approved plans and specifications as on date. These plans may vary by +/- 3% and are subject to changes. The furniture, accessories, etc. shown in the plans does not form a part of the offering. Customers are requested to visit the site office and apprise themselves of all the necessary details prior to making any purchase decisions.

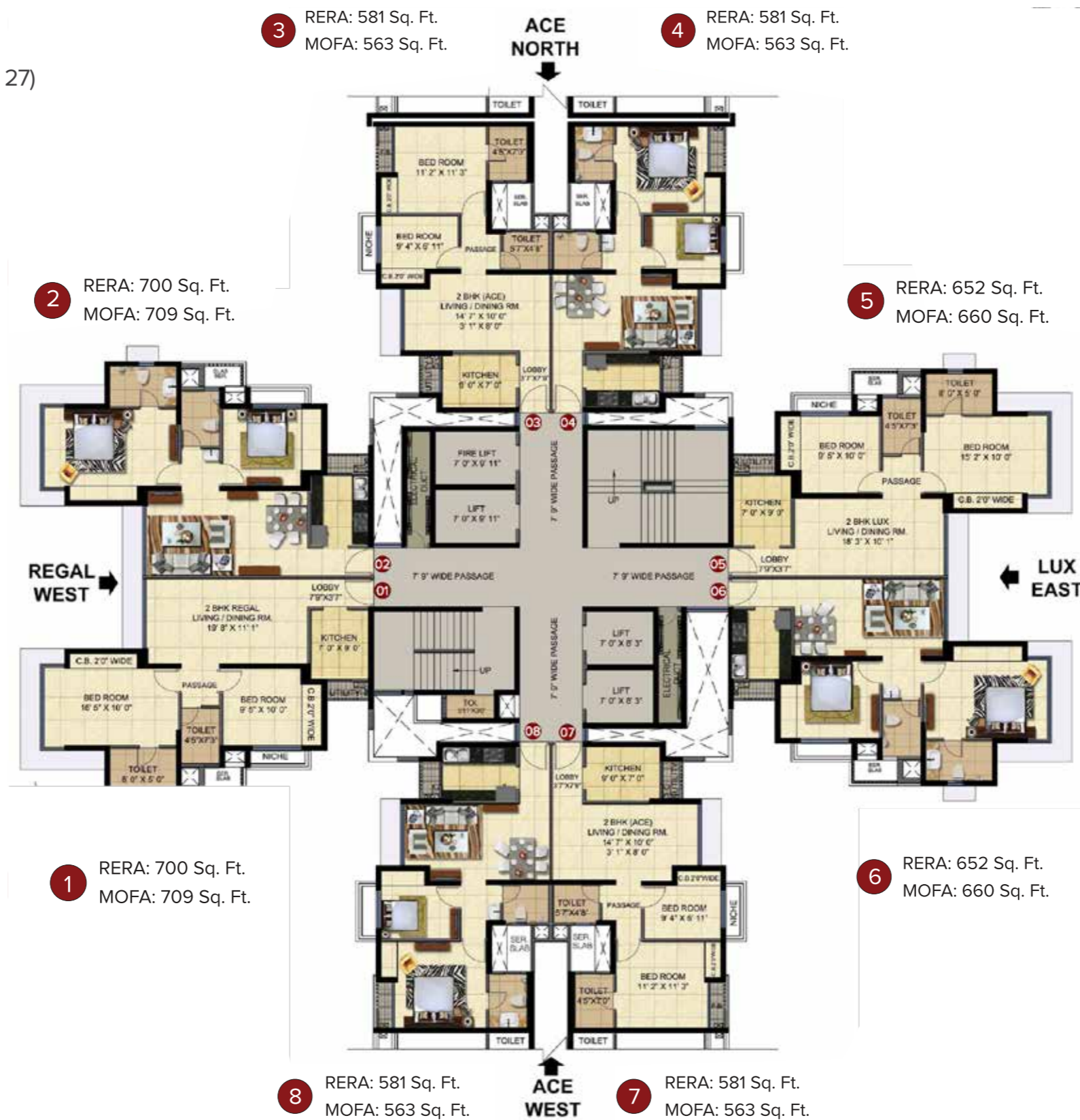
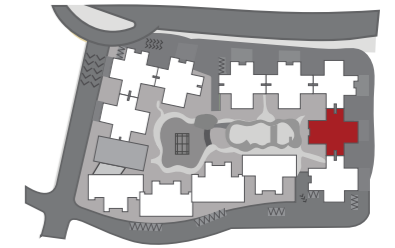
ALTIS - 2

Typical Floor Plan (Floors 28 - 31)



ZENITH - 1 & 2

Typical Floor Plan (Floors 1 - 27)

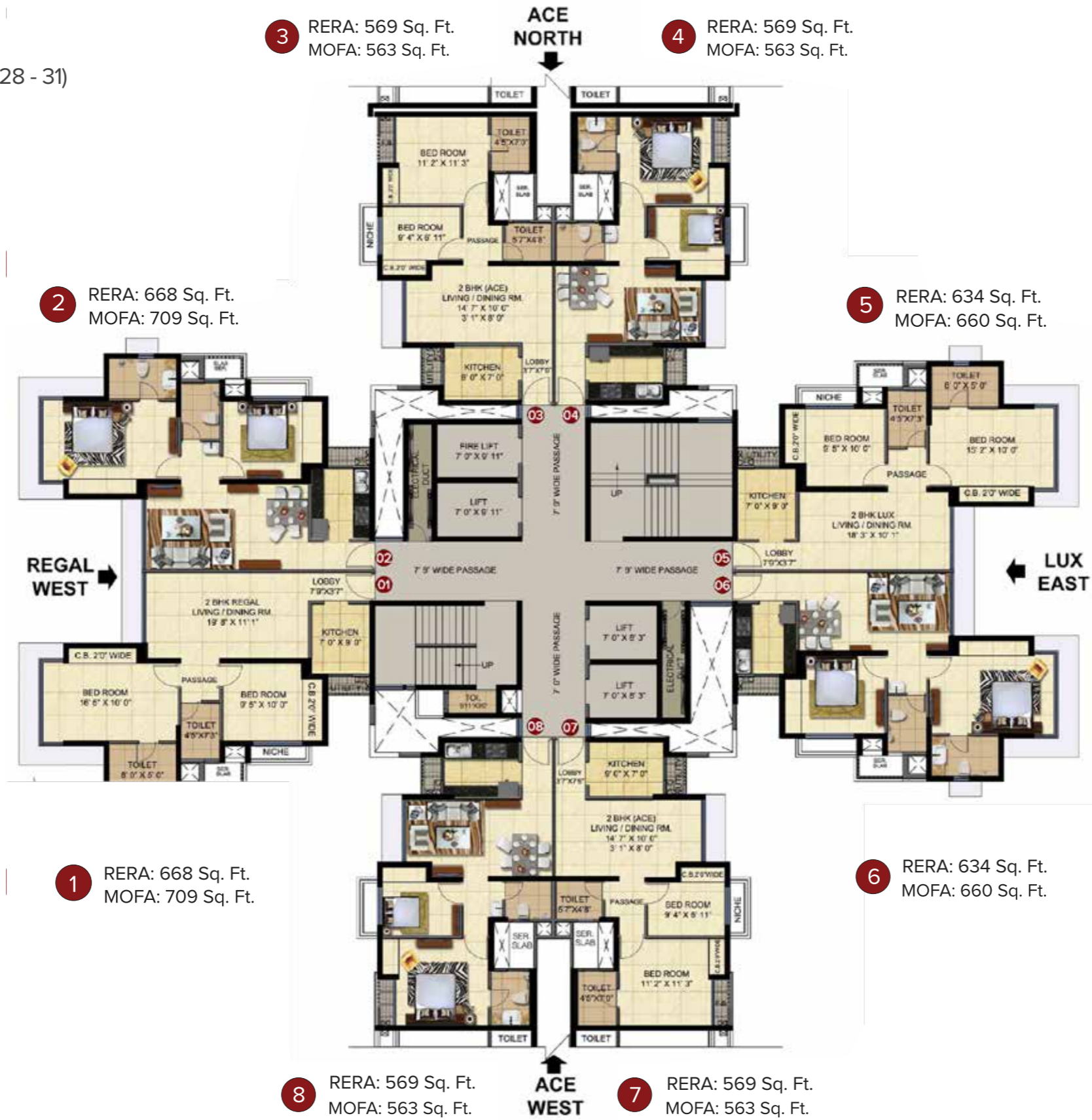
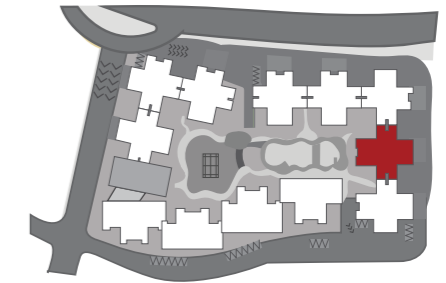


ZENITH-1 (2 Basements + 1st to 24th Floors): Maha RERA: P52000000658 | ZENITH-2 (Stilt + Podium + 25th to 31st Floors): Maha RERA: P52000000667

All RERA related details are available at <https://maharera.mahaonline.gov.in/> as well as our website marathon.in/nexzone. Customers are requested to visit the said link for details and update themselves with all the necessary details in respect of the project from time to time. The floor plans are as per the approved plans and specifications as on date. These plans may vary by +/- 3% and are subject to changes. The furniture, accessories, etc. shown in the plans does not form a part of the offering. Customers are requested to visit the site office and apprise themselves of all the necessary details prior to making any purchase decisions.

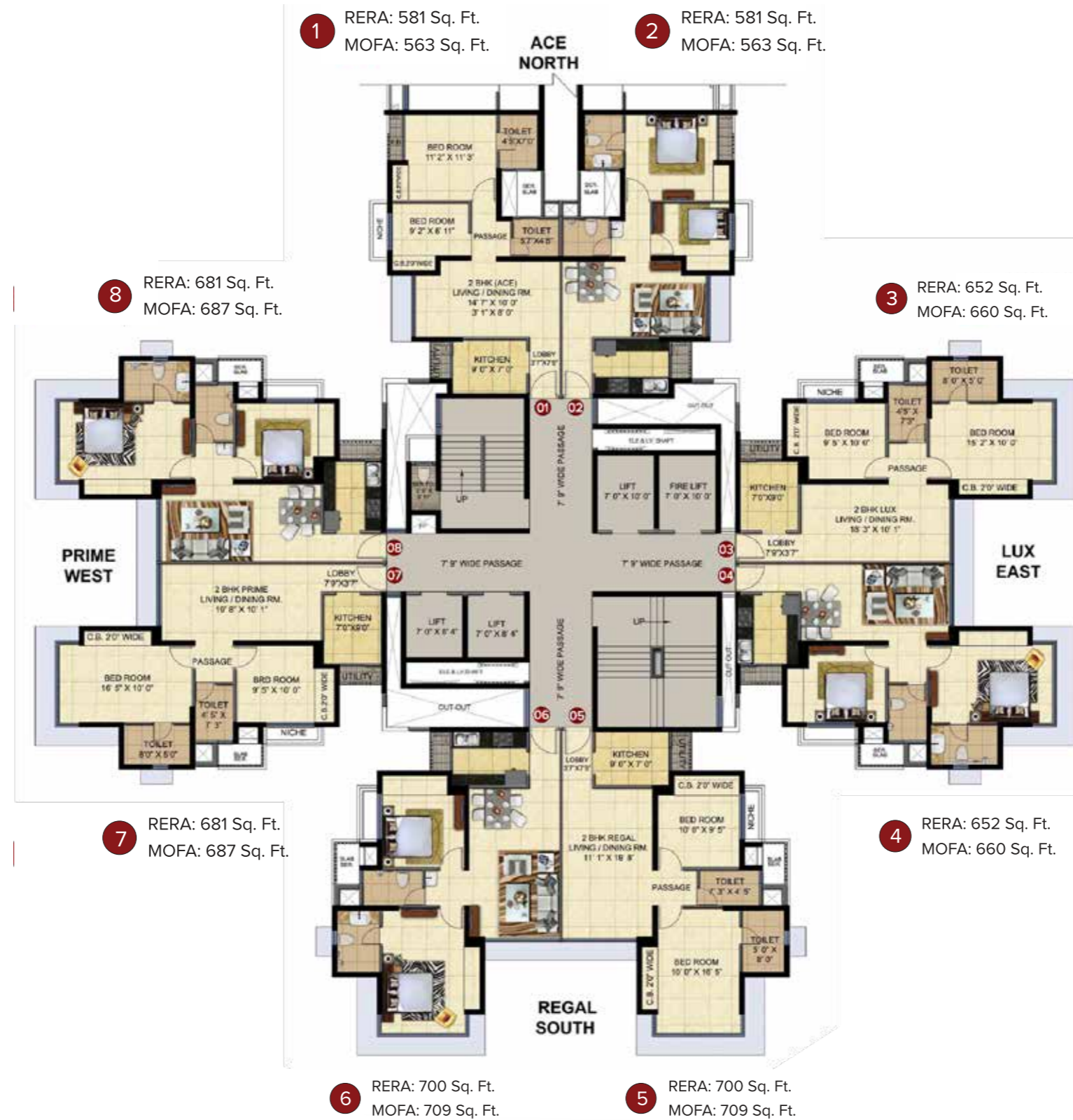
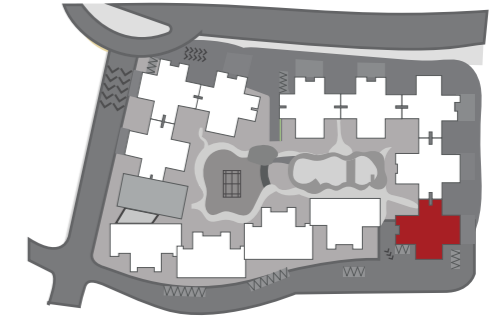
ZENITH - 2

Typical Floor Plan (Floors 28 - 31)



ZODIAC - 1 & 2

Typical Floor Plan (Floors 1-27)

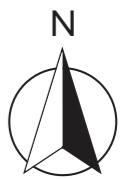
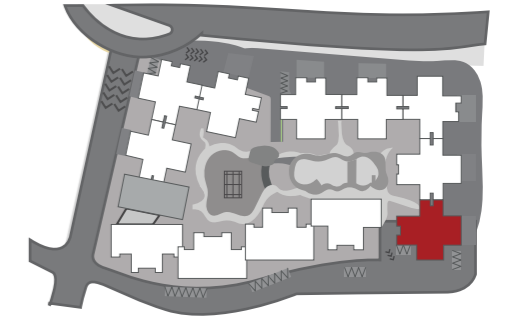


ZODIAC-1 (2 Basements + 1st to 24th Floors): Maha RERA: P52000000547 | ZODIAC-2 (Still + Podium + 25th to 31st Floors): Maha RERA: P52000000661

All RERA related details are available at <https://maharera.mahaonline.gov.in/> as well as our website marathon.in/nexzone. Customers are requested to visit the said link for details and update themselves with all the necessary details in respect of the project from time to time. The floor plans are as per the approved plans and specifications as on date. These plans may vary by +/- 3% and are subject to changes. The furniture, accessories, etc. shown in the plans does not form a part of the offering. Customers are requested to visit the site office and apprise themselves of all the necessary details prior to making any purchase decisions.

ZODIAC - 2

Typical Floor Plan (Floors 28 - 31)



ZODIAC-1 (2 Basements + 1st to 24th Floors): Maha RERA: P52000000547 | ZODIAC-2 (Stilt + Podium + 25th to 31st Floors): Maha RERA: P52000000661

All RERA related details are available at <https://maharera.mahaonline.gov.in/> as well as our website marathon.in/nexzone. Customers are requested to visit the said link for details and update themselves with all the necessary details in respect of the project from time to time. The floor plans are as per the approved plans and specifications as on date. These plans may vary by +/- 3% and are subject to changes. The furniture, accessories, etc. shown in the plans does not form a part of the offering. Customers are requested to visit the site office and apprise themselves of all the necessary details prior to making any purchase decisions.

Phase II

Plans

Cedar

1st to 33rd Floor

Typical Floor Plan



HIGHWAY SIDE VIEW

6

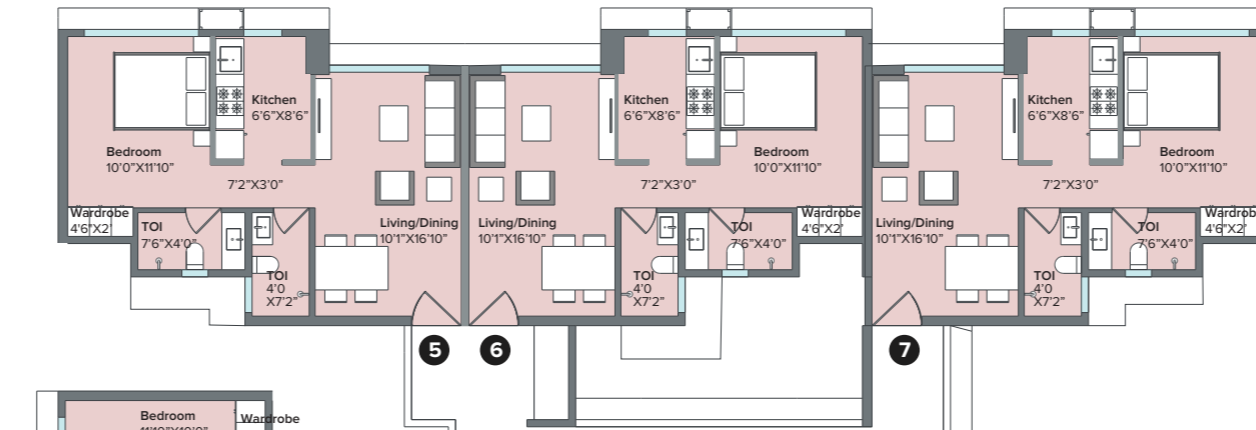
1 BHK
RERA Area : 449 sqft

5

1 BHK
RERA Area : 449 sqft

7

1 BHK
RERA Area : 449 sqft

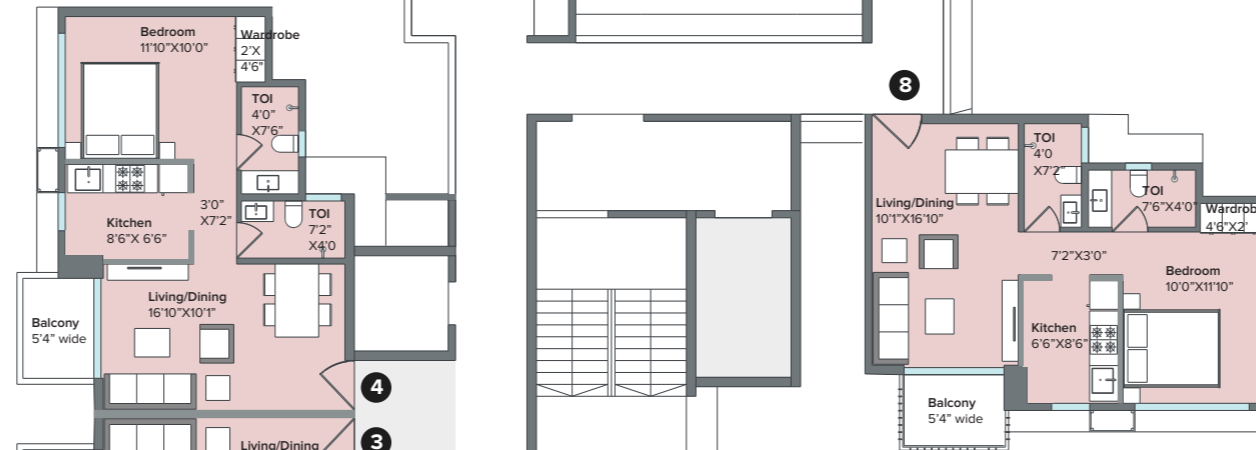


4

1 BHK With Balcony
RERA Area : 452 sqft
Balcony Area : 34 sqft

8

1 BHK With Balcony
RERA Area : 452 sqft
Balcony Area : 34 sqft



RIVER SIDE VIEW

3

1 BHK With Balcony
RERA Area : 452 sqft
Balcony Area : 34 sqft

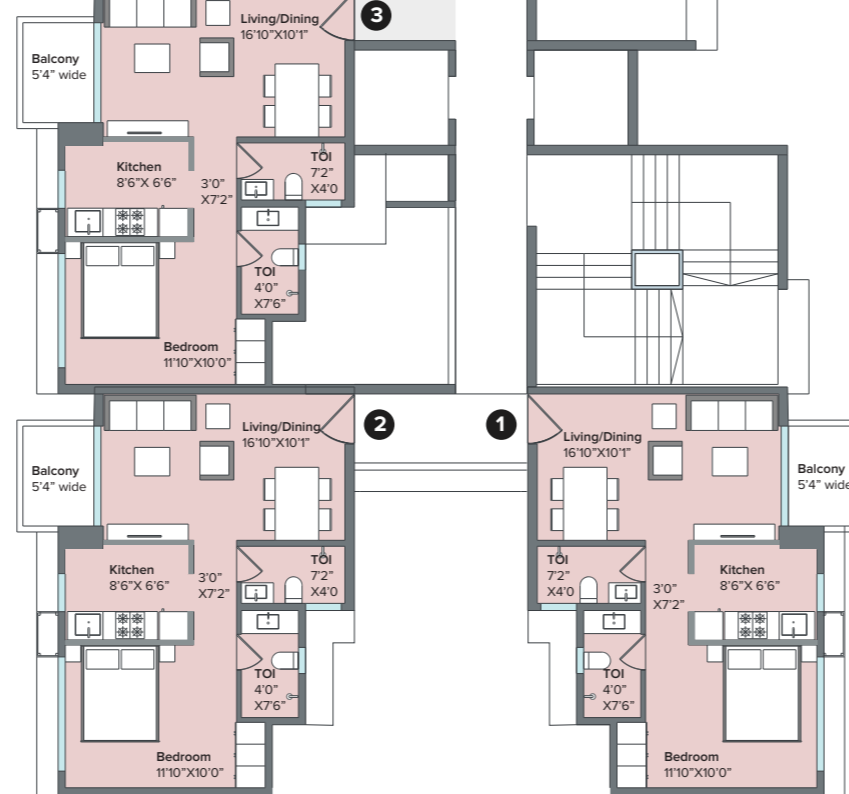
GARDEN SIDE VIEW

2

1 BHK With Balcony
RERA Area : 452 sqft
Balcony Area : 34 sqft

1

1 BHK With Balcony
RERA Area : 452 sqft
Balcony Area : 34 sqft



Floors 6, 11, 16, 21, 26, 31 are refuge floors and the following flats are not available for sale:

Flat no. 7 is not available on all refuge floors

Flats 5 & 6 have been combined to make a 2.5 BHK

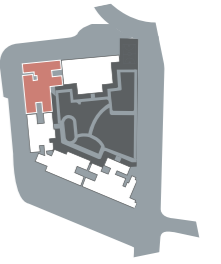
Maha RERA No.: P52000023250/P52000023255 · Terrace and Deck areas are not included in the above mentioned areas

Disclaimer: The floor plans are as per the approved plans and specifications as of date. These plans may vary by +/- 3% and are subject to changes. The furniture, accessories, etc. shown in the plans does not form a part of the offering. Customers are requested to visit the site office and apprise themselves of all the necessary details prior to making any purchase decisions.

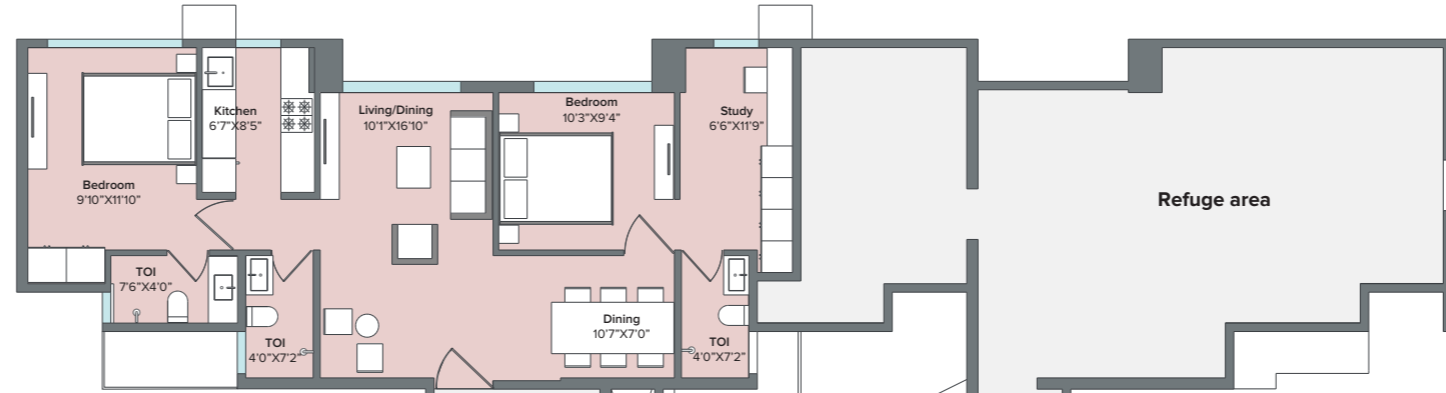
*Areas mentioned are RERA carpet area+ Enclosed balcony area

Cedar
8th, 13th, 18th & 23rd floor
 Refuge Floor Plan

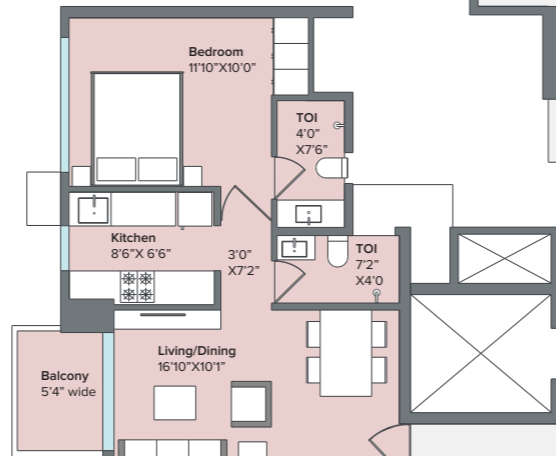
HIGHWAY SIDE VIEW



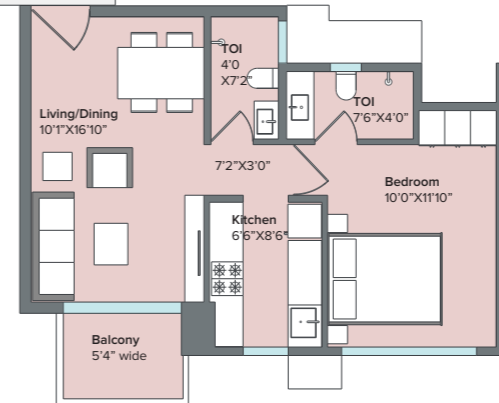
5
2.5 BHK
 RERA Area : 720 sqft



4
1 BHK With Balcony
 RERA Area : 452 sqft
 Balcony : 5'4" wide

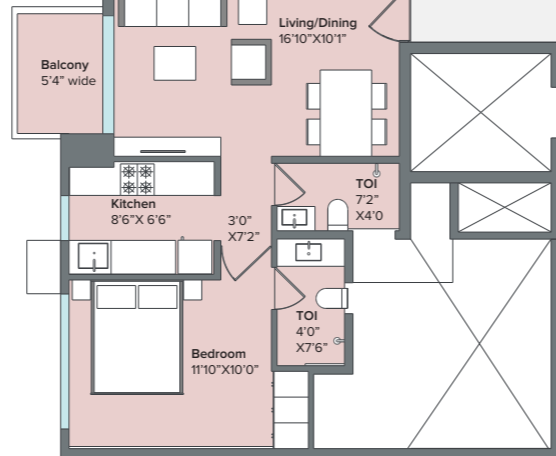


8
1 BHK With Balcony
 RERA Area : 452 sqft
 Balcony : 5'4" wide



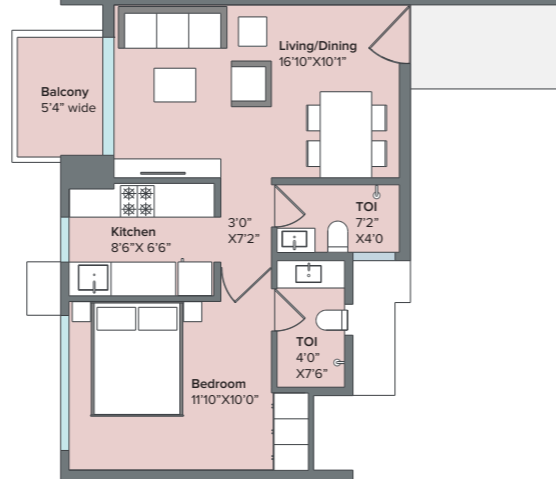
RIVER SIDE VIEW

3
1 BHK With Balcony
 RERA Area : 452 sqft
 Balcony : 5'4" wide

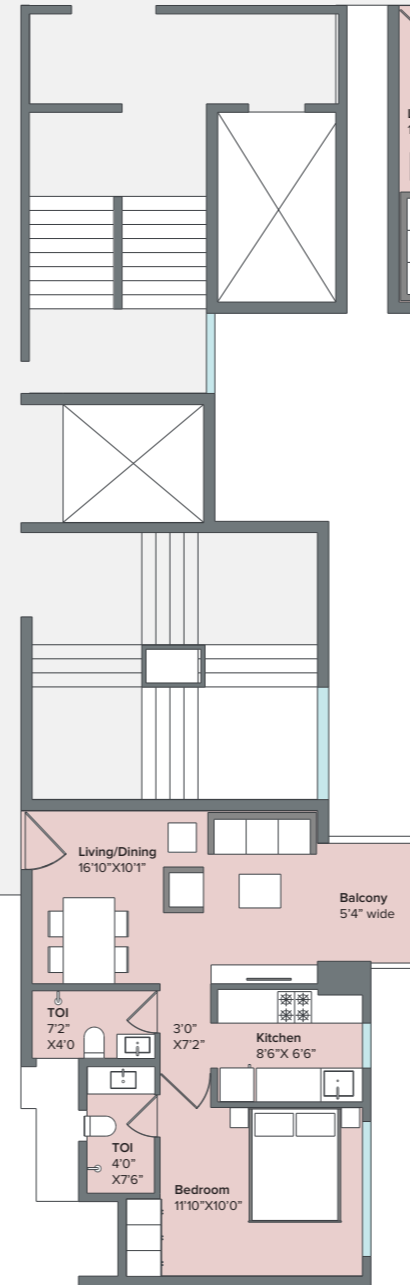


GARDEN SIDE VIEW

2
1 BHK With Balcony
 RERA Area : 452 sqft
 Balcony : 5'4" wide



1
1 BHK With Balcony
 RERA Area : 452 sqft
 Balcony : 5'4" wide



Floors 8, 12, 18, 23, 28, 33 are refuge floors and the following flats are not available for sale:
 Flat no. 7 is not available for sale
 Flats 5 & 6 have been combined to make a 2.5 BHK

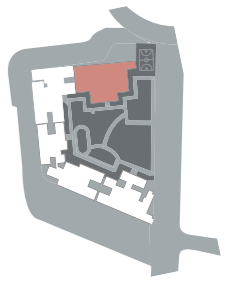
Maha RERA No.: P52000023250/P52000023255

Disclaimer: The floor plans are as per the approved plans and specifications as of date. These plans may vary by +/- 3% and are subject to changes. The furniture, accessories, etc. shown in the plans does not form a part of the offering. Customers are requested to visit the site office and apprise themselves of all the necessary details prior to making any purchase decisions.
 Areas mentioned are RERA carpet area Enclosed balcony area

Daffodil

1st to 33rd Floor

Typical Floor Plan



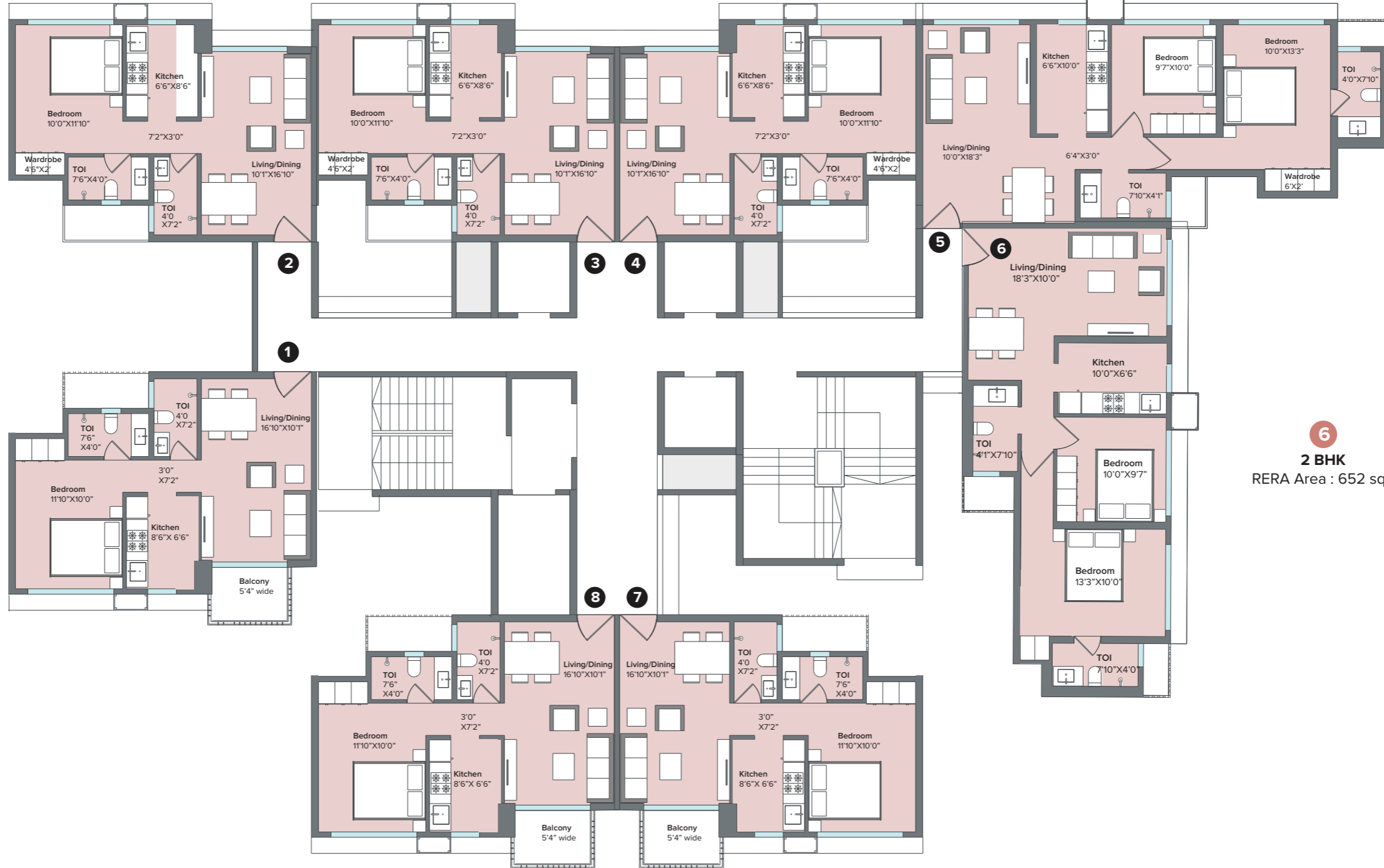
HIGHWAY SIDE VIEW

2
1 BHK
RERA Area : 449 sqft

3
1 BHK
RERA Area : 449 sqft

4
1 BHK
RERA Area : 449 sqft

5
2 BHK
RERA Area : 664 sqft



1
1 BHK With balcony
RERA Area : 452 sqft
Balcony Area : 34 sqft

6
2 BHK
RERA Area : 652 sqft

8
1 BHK With Balcony
RERA Area : 452 sqft
Balcony Area : 34 sqft

7
1 BHK With Balcony
RERA Area : 452 sqft
Balcony Area : 34 sqft

GARDEN SIDE VIEW

Floors 6, 11, 16, 21, 26, 31 are refuge floors and the following flats are not available for sale:
Flat no. 2 is not available on all refuge floors
Flats 3 & 4 have been combined to make a 2 BHK

Maha RERA No.: P52000023250/P52000023255

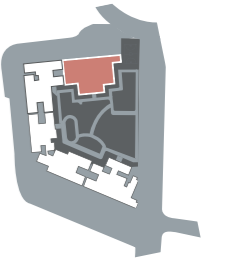
Disclaimer: The floor plans are as per the approved plans and specifications as of date. These plans may vary by +/- 3% and are subject to changes. The furniture, accessories, etc. shown in the plans does not form a part of the offering. Customers are requested to visit the site office and apprise themselves of all the necessary details prior to making any purchase decisions.
*Areas mentioned are RERA carpet area+ Enclosed balcony area

Daffodil

8th, 13th, 18th & 23rd floor

Refuge Floor Plan

HIGHWAY SIDE VIEW

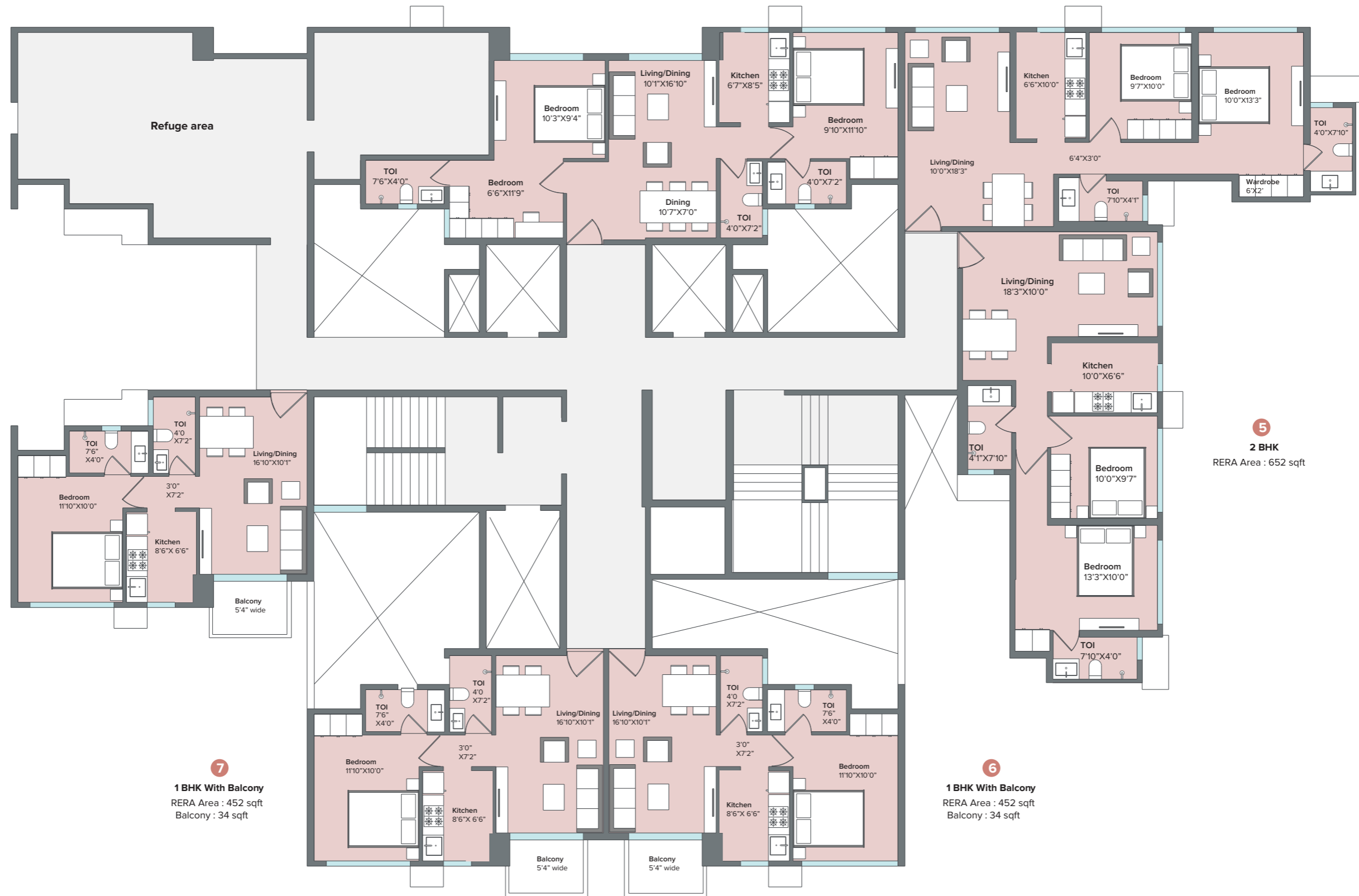


3

2.5 BHK
RERA Area : 720 sqft

4

2 BHK
RERA Area : 664 sqft



GARDEN SIDE VIEW

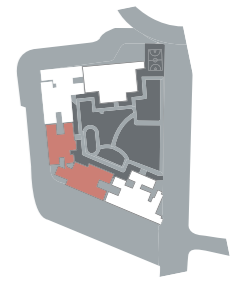
Floors 8, 12, 18, 23, 28, 33 are refuge floors and the following flats are not available for sale:
Flat no. 7 is not available for sale
Flats 5 & 6 have been combined to make a 2.5 BHK

RERA Application Id: REA52000063453/ REA52000063455

Disclaimer: The floor plans are as per the approved plans and specifications as of date. These plans may vary by +/- 3% and are subject to changes. The furniture, accessories, etc. shown in the plans does not form a part of the offering. Customers are requested to visit the site office and apprise themselves of all the necessary details prior to making any purchase decisions.
*Areas mentioned are RERA carpet area+ Enclosed balcony area

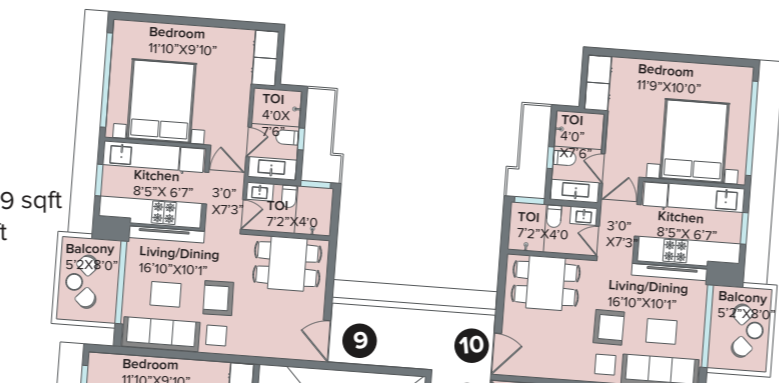
Bodhi

Typical Floor Plan



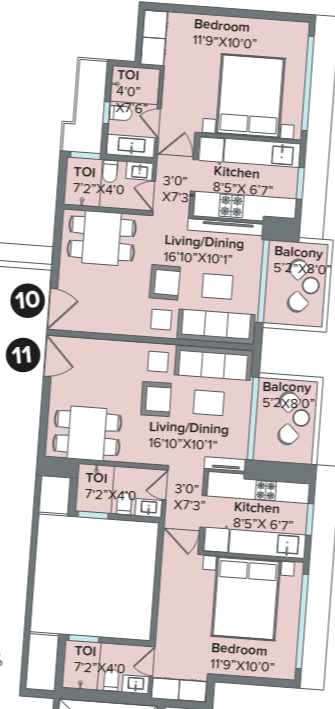
9

1 BHK With balcony
 RERA Area : 431.00 sqft
 Enc. Balcony Area : 35.09 sqft
 Balcony Area : 33.69 sqft



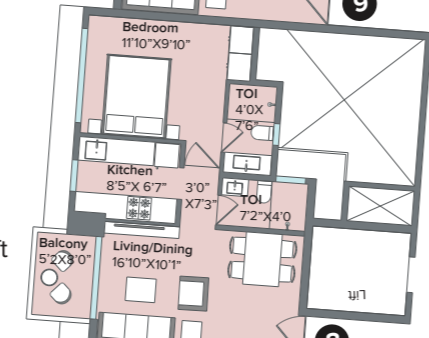
10

1 BHK With balcony
 RERA Area : 459.00 sqft
 Balcony Area : 33.69 sqft



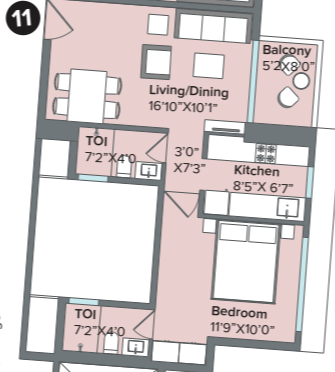
8

1 BHK With balcony
 RERA Area : 431.00 sqft
 Enc. Balcony Area : 34.55 sqft
 Balcony Area : 33.69 sqft



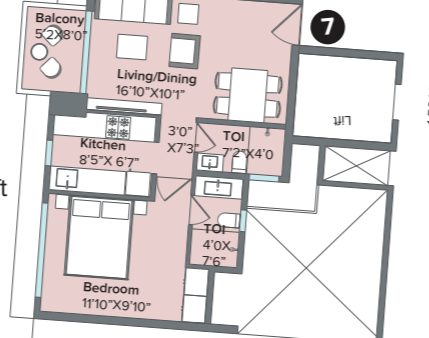
11

1 BHK With balcony
 RERA Area : 459.00 sqft
 Balcony Area : 33.69 sqft



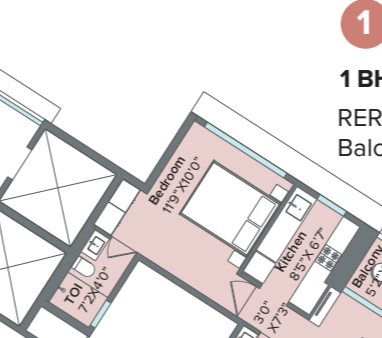
7

1 BHK With balcony
 RERA Area : 431.00 sqft
 Enc. Balcony Area : 35.09 sqft
 Balcony Area : 33.69 sqft



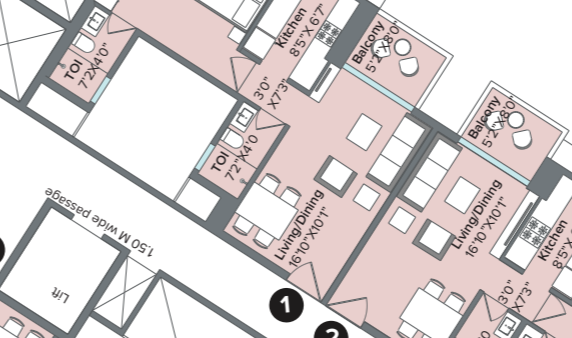
1

1 BHK With balcony
 RERA Area : 459.00 sqft
 Balcony Area : 33.69 sqft



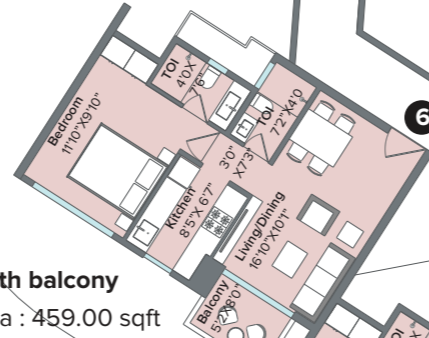
2

1 BHK With balcony
 RERA Area : 459.00 sqft
 Balcony Area : 33.69 sqft



6

1 BHK With balcony
 RERA Area : 459.00 sqft
 Balcony Area : 33.69 sqft



6

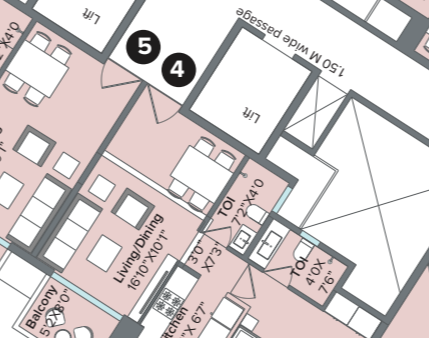
5

1 BHK With balcony
 RERA Area : 459.00 sqft
 Balcony Area : 33.69 sqft



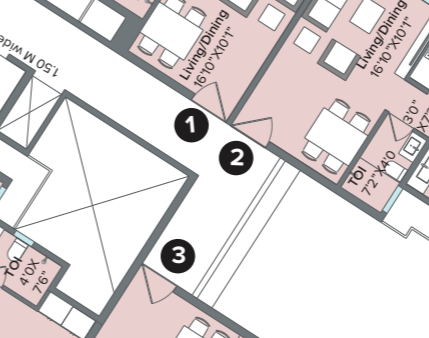
4

1 BHK With balcony
 RERA Area : 459.00 sqft
 Balcony Area : 33.69 sqft



3

1 BHK With balcony
 RERA Area : 459.00 sqft
 Balcony Area : 33.69 sqft



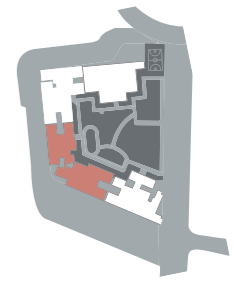
Floors 7, 12, 17, 22 are refuge floors and the following flats are not available for sale:
 Flat no. 3, 4 is not available on all refuge floors

Maha RERA No.: P52000029857/58

Disclaimer: The floor plans are as per the approved plans and specifications as of date. These plans may vary by +/- 3% and are subject to changes. The furniture, accessories, etc. shown in the plans does not form a part of the offering. Customers are requested to visit the site office and apprise themselves of all the necessary details prior to making any purchase decisions. *Areas mentioned are RERA carpet area+ Enclosed balcony area

Bodhi

Refuge Floor Plan



9

1 BHK With balcony
 RERA Area : 431.00 sqft
 Enc. Balcony Area : 35.09 sqft
 Balcony Area : 33.69 sqft

8

1 BHK With balcony
 RERA Area : 431.00 sqft
 Enc. Balcony Area : 34.55 sqft
 Balcony Area : 33.69 sqft

7

1 BHK With balcony
 RERA Area : 431.00 sqft
 Enc. Balcony Area : 35.09 sqft
 Balcony Area : 33.69 sqft

6

1 BHK With balcony
 RERA Area : 459.00 sqft
 Balcony Area : 33.69 sqft

5

2 BHK With balcony
 RERA Area : 576.00 sqft
 Balcony Area : 67.36 sqft

10

1 BHK With balcony
 RERA Area : 459.00 sqft
 Balcony Area : 33.69 sqft

11

1 BHK With balcony
 RERA Area : 459.00 sqft
 Balcony Area : 33.90 sqft

1

1 BHK With balcony
 RERA Area : 459.00 sqft
 Balcony Area : 33.90 sqft

2

1 BHK With balcony
 RERA Area : 459.00 sqft
 Balcony Area : 33.69 sqft

Refuge Area

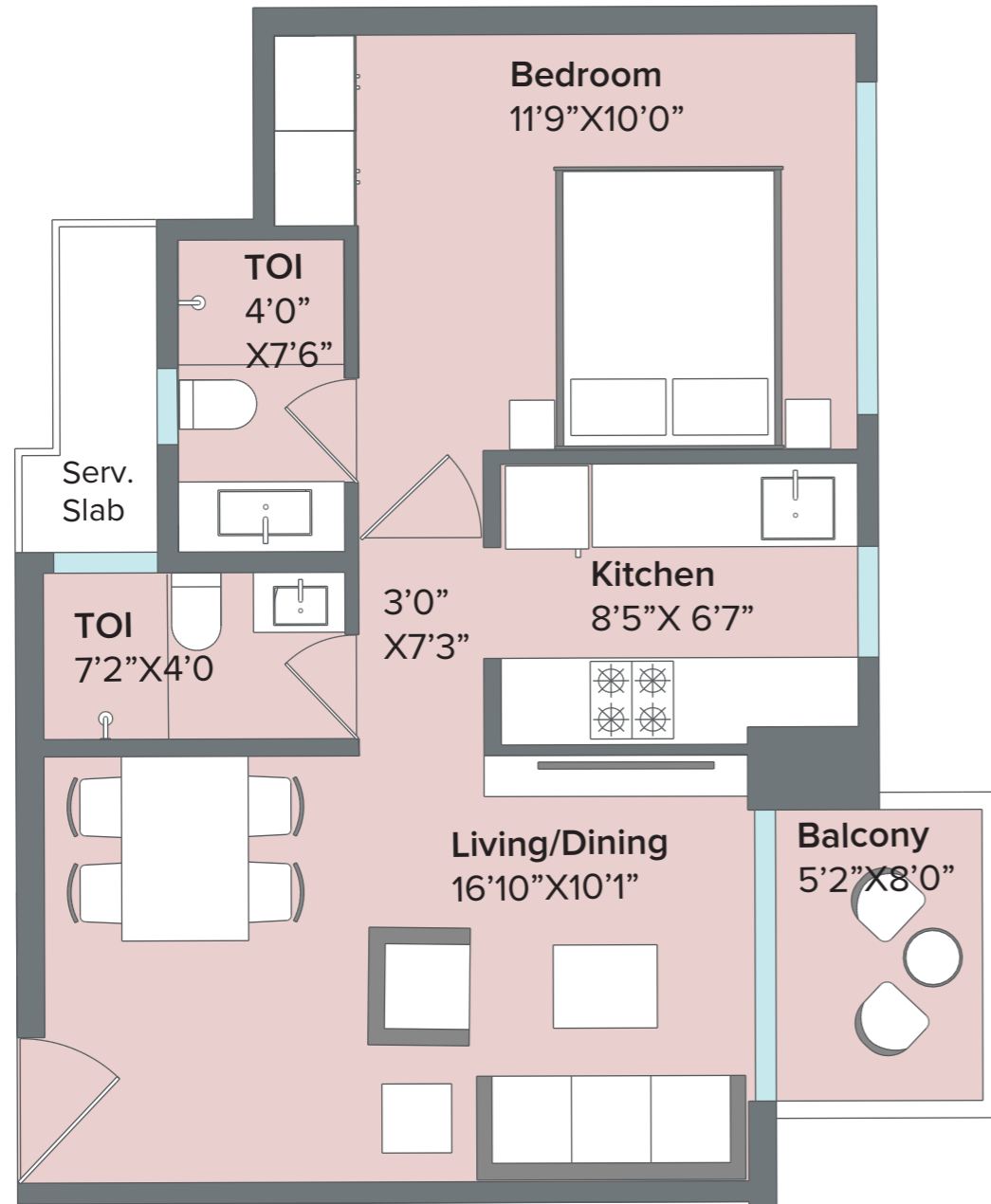
Floors 6th,11th,16th,21st & 26th are refuge floors and the following flats are not available for sale:
 Flat no. 3, 4 is not available on all refuge floors

Maha RERA No.: P52000029857/58

Disclaimer: The floor plans are as per the approved plans and specifications as of date. These plans may vary by +/- 3% and are subject to changes. The furniture, accessories, etc. shown in the plans does not form a part of the offering. Customers are requested to visit the site office and apprise themselves of all the necessary details prior to making any purchase decisions
 *Areas mentioned are RERA carpet area+ Enclosed balcony area

1 BHK With Balcony

RERA Area : 459.00 sqft
Balcony Area : 33.69 sqft

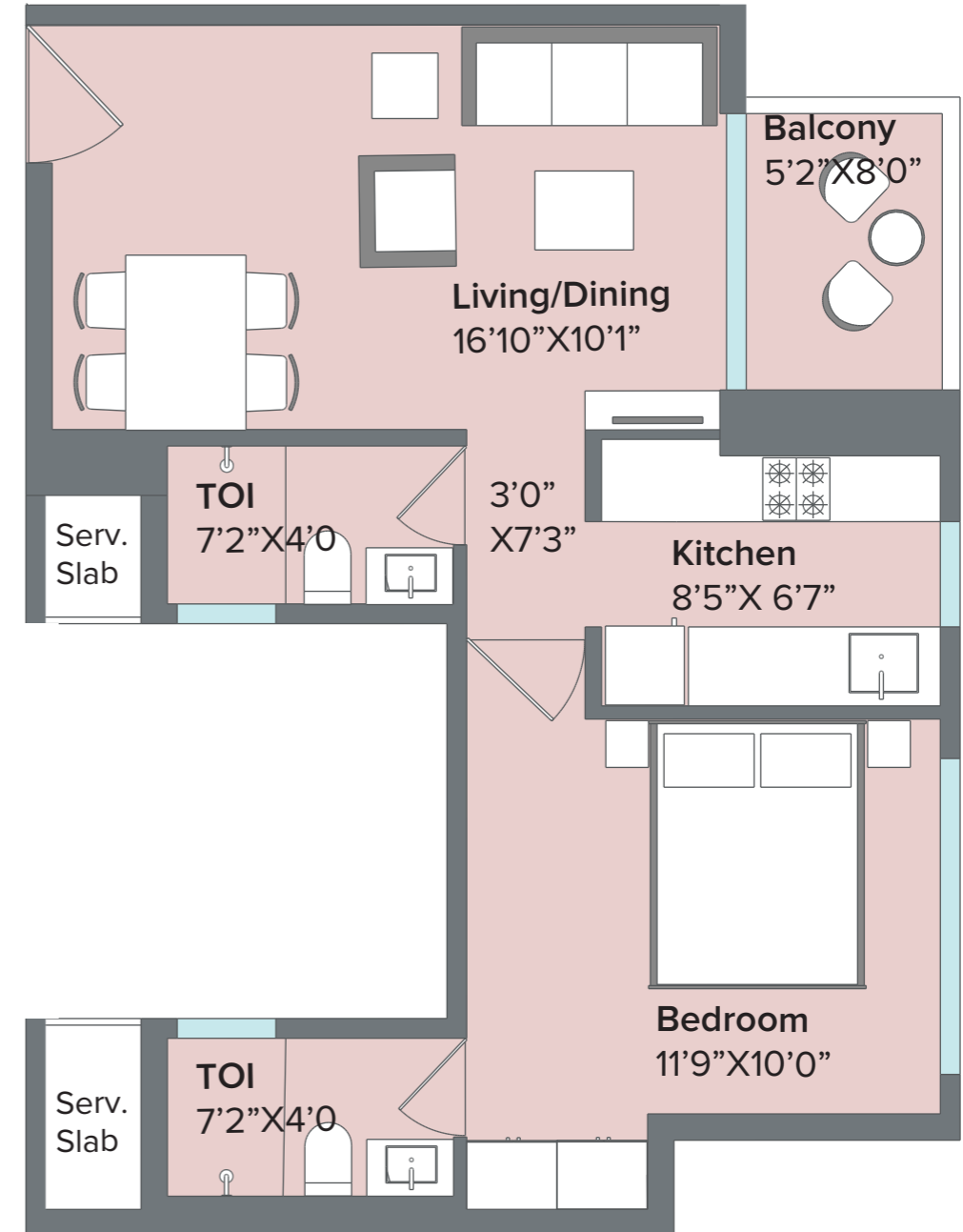
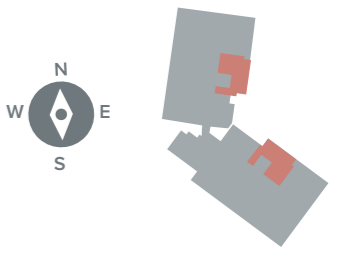


This configuration is available in flat numbers 2, 3, 4, 5, 6, 7, 8, 9 & 10 in Bodhi

Maha RERA No: P52000023254/ P52000023137/ P52000023250/ P52000023255 / P52000029857/58
Disclaimer: The floor plans are as per the approved plans and specifications as of date. These plans may vary by +/- 3% and are subject to changes. The furniture, accessories, etc. shown in the plans does not form a part of the offering. Customers are requested to visit the site office and apprise themselves of all the necessary details prior to making any purchase decisions.
*Areas mentioned are RERA carpet area+ Enclosed balcony area

1 BHK With Balcony

RERA Area : 459.00 sqft
Balcony Area : 33.69 sqft



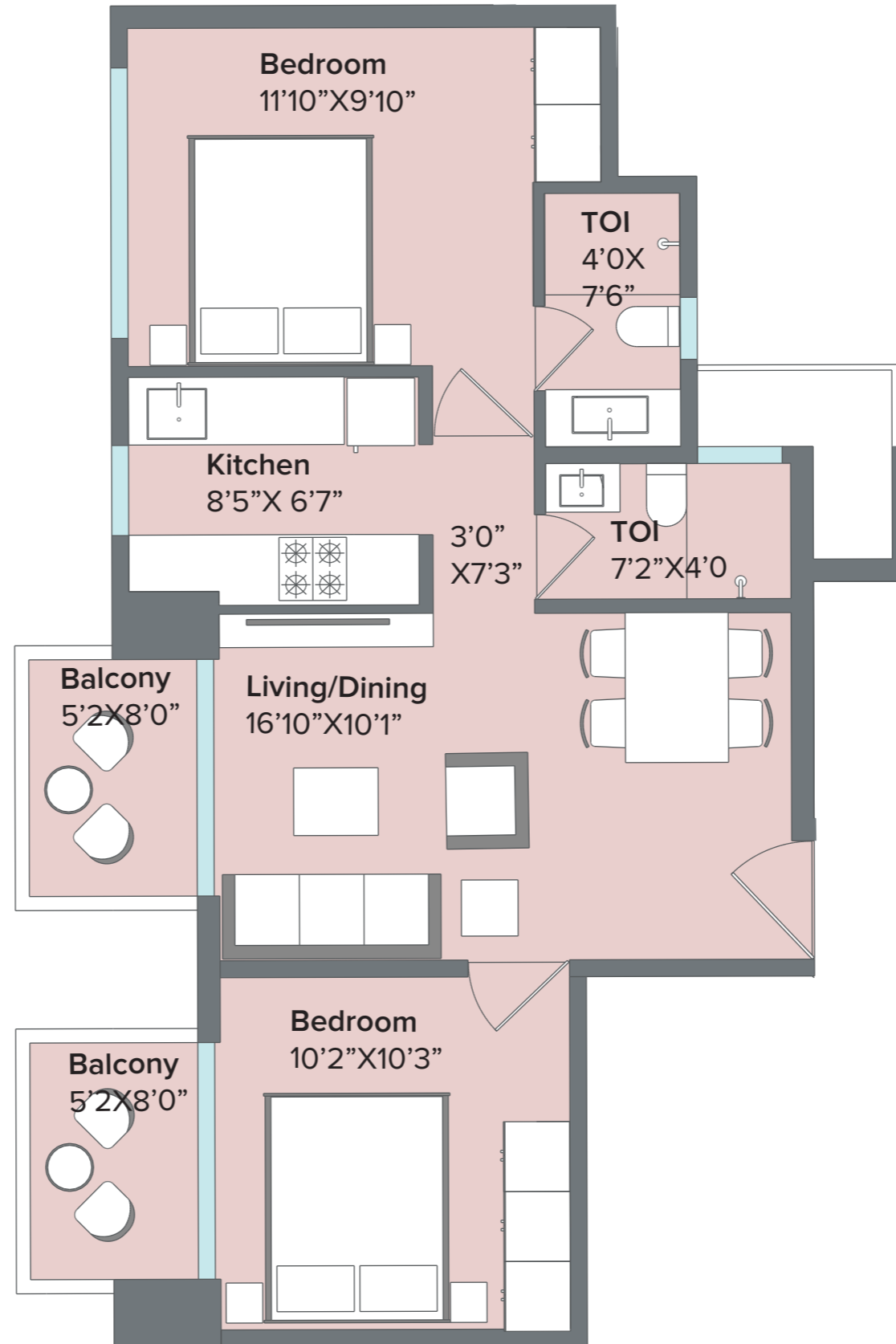
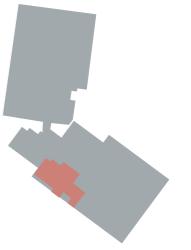
This configuration is available in flat numbers 1 & 11 in Bodhi

Maha RERA No: P52000023254/ P52000023137/ P52000023250/ P52000023255 / P52000029857/58
Disclaimer: The floor plans are as per the approved plans and specifications as of date. These plans may vary by +/- 3% and are subject to changes. The furniture, accessories, etc. shown in the plans does not form a part of the offering. Customers are requested to visit the site office and apprise themselves of all the necessary details prior to making any purchase decisions.
*Areas mentioned are RERA carpet area+ Enclosed balcony area

2 BHK With Balcony

RERA Area : 576.00 sqft

Balcony Area : 67.36 sqft

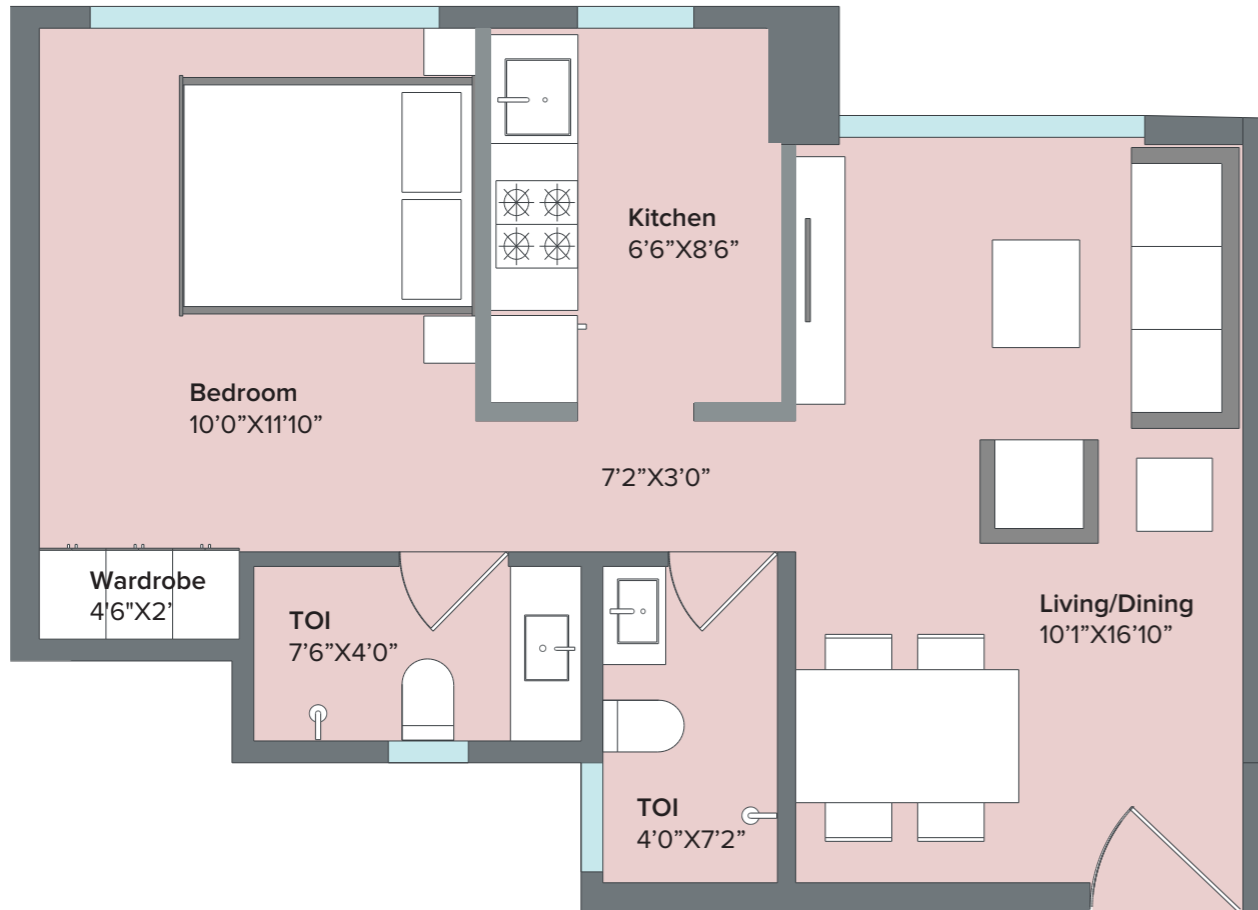


This configuration is available on 6th, 11th, 16th, 21st & 26th floor in flat numbers 5 in Bodhi

Maha RERA No: P52000023254/ P52000023137/ P52000023250/ P52000023255 / P52000029857/58
Disclaimer: The floor plans are as per the approved plans and specifications as of date. These plans may vary by +/- 3% and are subject to changes. The furniture, accessories, etc. shown in the plans does not form a part of the offering. Customers are requested to visit the site office and apprise themselves of all the necessary details prior to making any purchase decisions.
*Areas mentioned are RERA carpet area+ Enclosed balcony area

1 BHK

RERA Area : 449 sqft

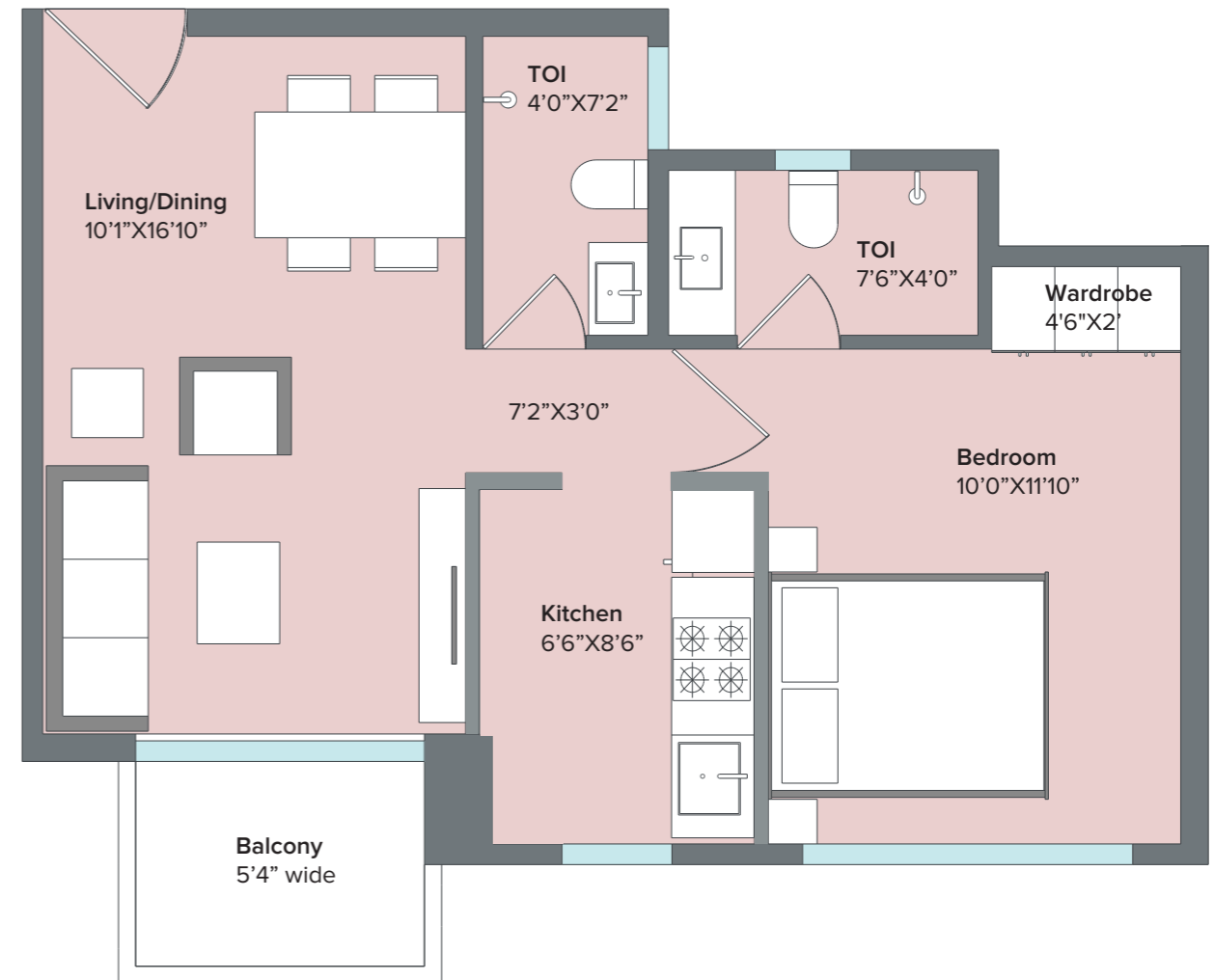


This configuration is available in flat numbers 2, 3 & 4 in Daffodil and flat numbers 5, 6 & 7 in Cedar

- Terrace and Deck areas are not included in the above mentioned areas
Maha RERA No: P52000023254/ P52000023137/ P52000023250/ P52000023255
Disclaimer: The floor plans are as per the approved plans and specifications as of date. These plans may vary by +/- 3% and are subject to changes. The furniture, accessories, etc. shown in the plans does not form a part of the offering. Customers are requested to visit the site office and apprise themselves of all the necessary details prior to making any purchase decisions.
*Areas mentioned are RERA carpet area+ Enclosed balcony area

1 BHK With Balcony

RERA Area : 452 sqft
Balcony Area : 34 sqft

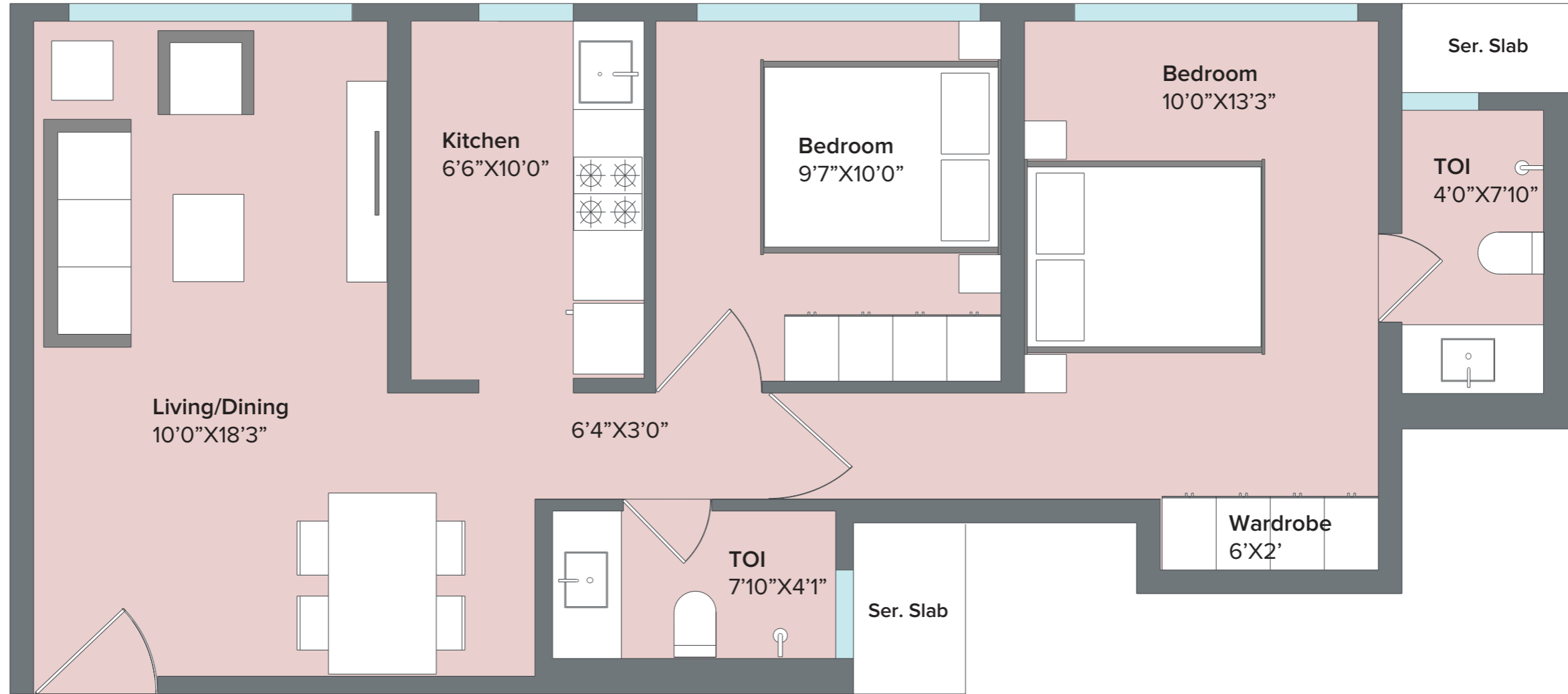


This configuration is available in flat numbers 1, 7 & 8 in Daffodil and flat numbers 1, 2, 3, 4 & 8 in Cedar

- Terrace and Deck areas are not included in the above mentioned areas
Maha RERA No: P52000023254/ P52000023137/ P52000023250/ P52000023255
Disclaimer: The floor plans are as per the approved plans and specifications as of date. These plans may vary by +/- 3% and are subject to changes. The furniture, accessories, etc. shown in the plans does not form a part of the offering. Customers are requested to visit the site office and apprise themselves of all the necessary details prior to making any purchase decisions.
*Areas mentioned are RERA carpet area+ Enclosed balcony area

2 BHK

RERA Area : 664 sqft



This configuration is available in flat numbers 5 in Daffodil

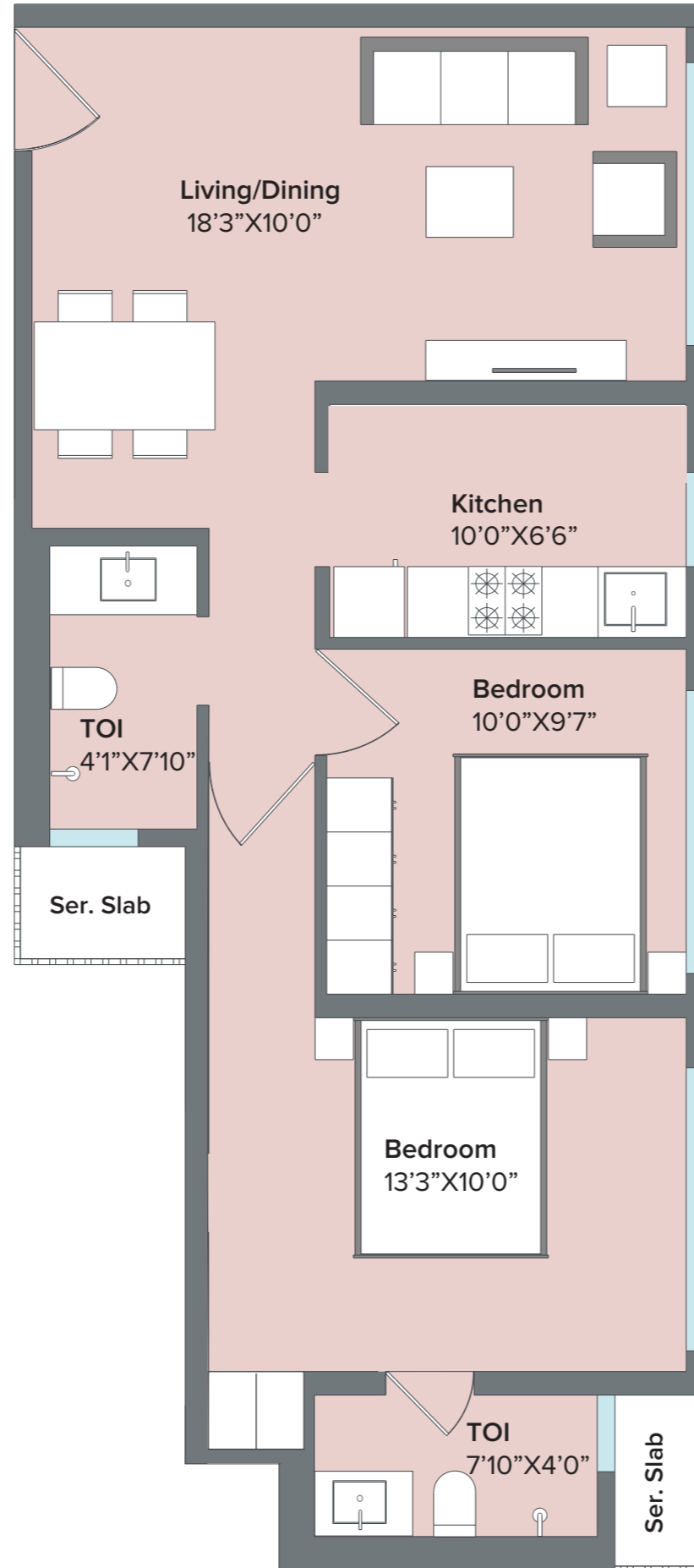
RERA Application Id: REA52000063453/ REA52000063455

Disclaimer: The floor plans are as per the approved plans and specifications as of date. These plans may vary by +/- 3% and are subject to changes. The furniture, accessories, etc. shown in the plans does not form a part of the offering. Customers are requested to visit the site office and apprise themselves of all the necessary details prior to making any purchase decisions.

*Areas mentioned are RERA carpet area+ Enclosed balcony area

2 BHK

RERA Area : 652 sqft



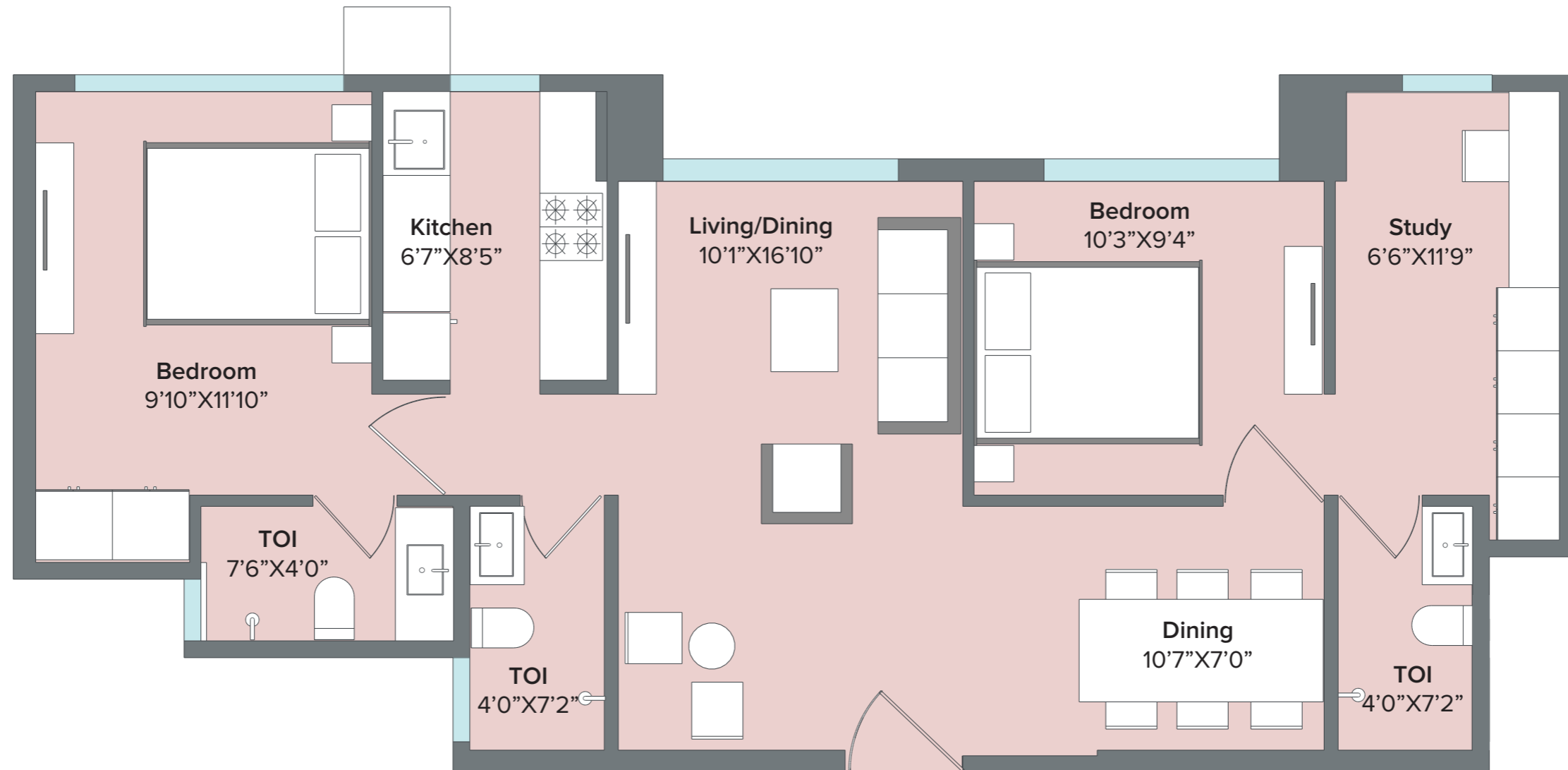
This configuration is available in flat numbers 6 in Daffodil

RERA Application Id: REA5200063453/ REA5200063455

Disclaimer: The floor plans are as per the approved plans and specifications as of date. These plans may vary by +/- 3% and are subject to changes. The furniture, accessories, etc. shown in the plans does not form a part of the offering. Customers are requested to visit the site office and apprise themselves of all the necessary details prior to making any purchase decisions. *Areas mentioned are RERA carpet area+ Enclosed balcony area

2.5 BHK

RERA Area : 720 sqft



This configuration is available in Cedar,
in flat no. 5 in all refuge floors (8, 13, 18 & 23)

· Terrace and Deck areas are not included in the above mentioned areas

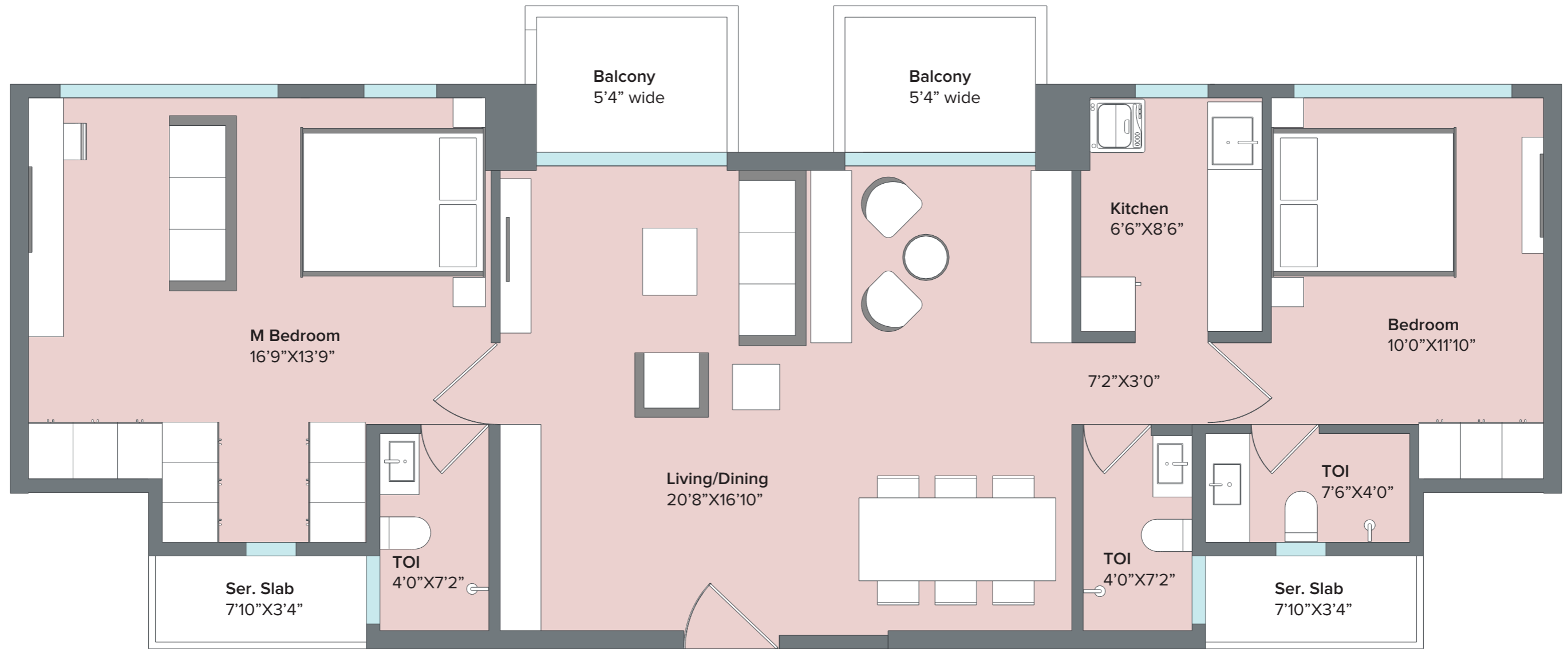
Maha RERA No.: P52000023250/P52000023255

Disclaimer: The floor plans are as per the approved plans and specifications as of date. These plans may vary by +/- 3% and are subject to changes. The furniture, accessories, etc. shown in the plans does not form a part of the offering. Customers are requested to visit the site office and apprise themselves of all the necessary details prior to making any purchase decisions.
Areas mentioned are RERA carpet area Enclosed balcony area

2 BHK Combination plan

RERA Area : 926 sqft

Balcony Area : 67 sqft



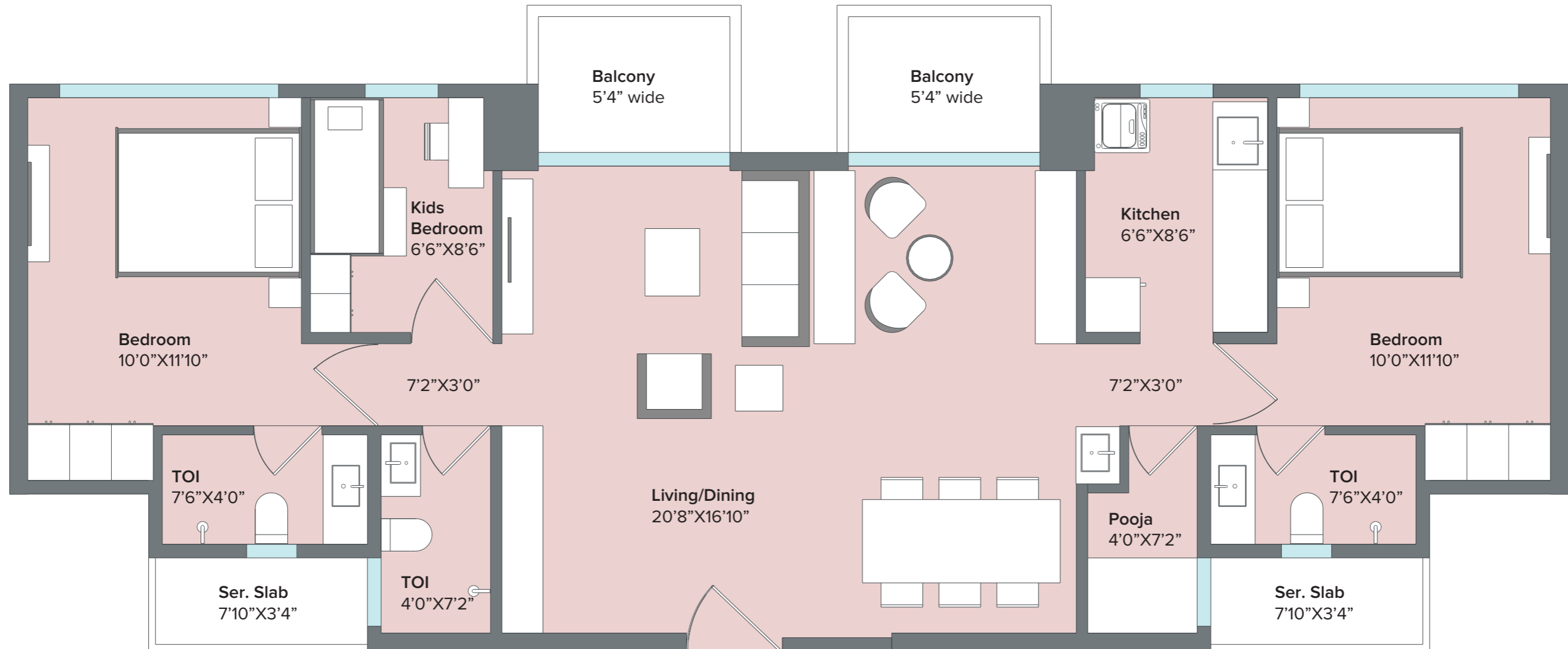
This configuration is available in combination of Flat number 5 & 6 and 3 & 4 in Cedar. These combination apartments are available on the typical floors.
2BHK without balcony option is also available. All dimensions remain the same, only balcony is removed in that plan. The RERA carpet area of the 2BHK combination without balcony is 917 sqft

- Terrace and Deck areas are not included in the above mentioned areas
Maha RERA No: P52000023254/ P52000023137/ P52000023250/ P52000023255
Disclaimer: The floor plans are as per the approved plans and specifications as of date. These plans may vary by +/- 3% and are subject to changes. The furniture, accessories, etc. shown in the plans does not form a part of the offering. Customers are requested to visit the site office and apprise themselves of all the necessary details prior to making any purchase decisions.
*Areas mentioned are RERA carpet area+ Enclosed balcony area

2.5 BHK Combination plan

RERA Area : 926 sqft

Balcony Area : 67 sqft

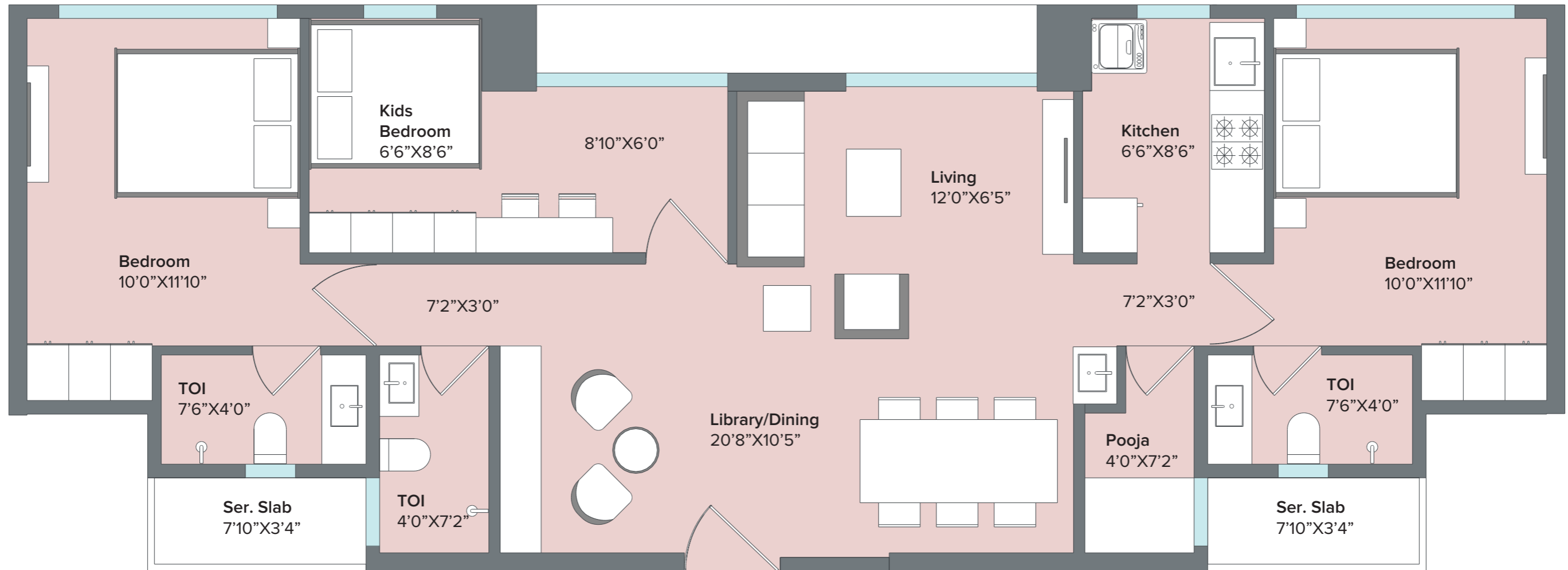


This configuration is available in combination of Flat number 5 & 6 and 3 & 4 in Cedar. These combination apartments are available on the typical floors. 2.5BHK without balcony option is also available. All dimensions remain the same, only balcony is removed in that plan. The RERA carpet area of the 2.5BHK combination without balcony is 917 sqft

- Terrace and Deck areas are not included in the above mentioned areas
Maha RERA No: P52000023254/ P52000023137/ P52000023250/ P52000023255
Disclaimer: The floor plans are as per the approved plans and specifications as of date. These plans may vary by +/- 3% and are subject to changes. The furniture, accessories, etc. shown in the plans does not form a part of the offering. Customers are requested to visit the site office and apprise themselves of all the necessary details prior to making any purchase decisions.
*Areas mentioned are RERA carpet area+ Enclosed balcony area

3 BHK Combination plan (Option 1)

RERA Area : 917 sqft



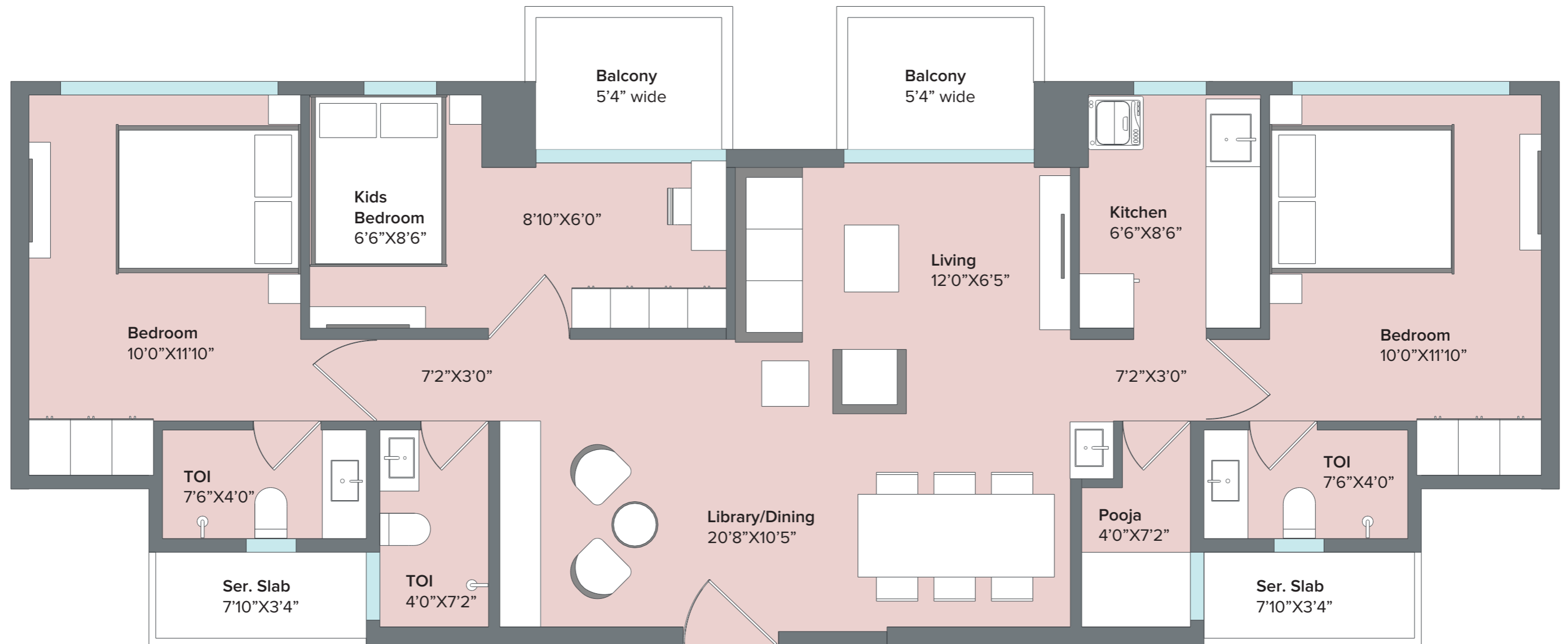
This configuration is available in combination of Flat number 5 & 6 and 3 & 4 in Cedar. These combination apartments are available on the typical floors. 3BHK with balcony option is also available. All dimensions remain the same, only balcony gets added in that plan. The RERA carpet area of the 3BHK combination with balcony is 926 sqft & the balcony area is 67 sqft

Terrace and Deck areas are not included in the above mentioned areas
 Maha RERA No: P52000023254/ P52000023137/ P52000023250/ P52000023255
 Disclaimer: The floor plans are as per the approved plans and specifications as of date. These plans may vary by +/- 3% and are subject to changes. The furniture, accessories, etc. shown in the plans does not form a part of the offering. Customers are requested to visit the site office and apprise themselves of all the necessary details prior to making any purchase decisions.
 *Areas mentioned are RERA carpet area+ Enclosed balcony area

3 BHK Combination plan (Option 2)

RERA Area : 926 sqft

Balcony Area : 67 sqft



This configuration is available in combination of Flat number 5 & 6 and 3 & 4 in Cedar. These combination apartments are available on the typical floors. 3BHK without balcony option is also available. All dimensions remain the same, only balcony is removed in that plan. The RERA carpet area of the 3BHK combination without balcony is 917 sqft

Terrace and Deck areas are not included in the above mentioned areas
 Maha RERA No: P52000023254/ P52000023137/ P52000023250/ P52000023255
 Disclaimer: The floor plans are as per the approved plans and specifications as of date. These plans may vary by +/- 3% and are subject to changes. The furniture, accessories, etc. shown in the plans does not form a part of the offering. Customers are requested to visit the site office and apprise themselves of all the necessary details prior to making any purchase decisions.
 *Areas mentioned are RERA carpet area+ Enclosed balcony area