

Ekveera

Mulund (W)

MARATHON



Modern Homes at Mulund's Prime Location!

Marathon and Mulund is a long love story. From shaping Mulund's skyline to making it an emerging commercial hub, Marathon Group has been instrumental in developing the "Prince of Suburbs". This time, we are back with another masterpiece - Ekveera, an epitome of elegance coupled with unparalleled affordability in Mulund.



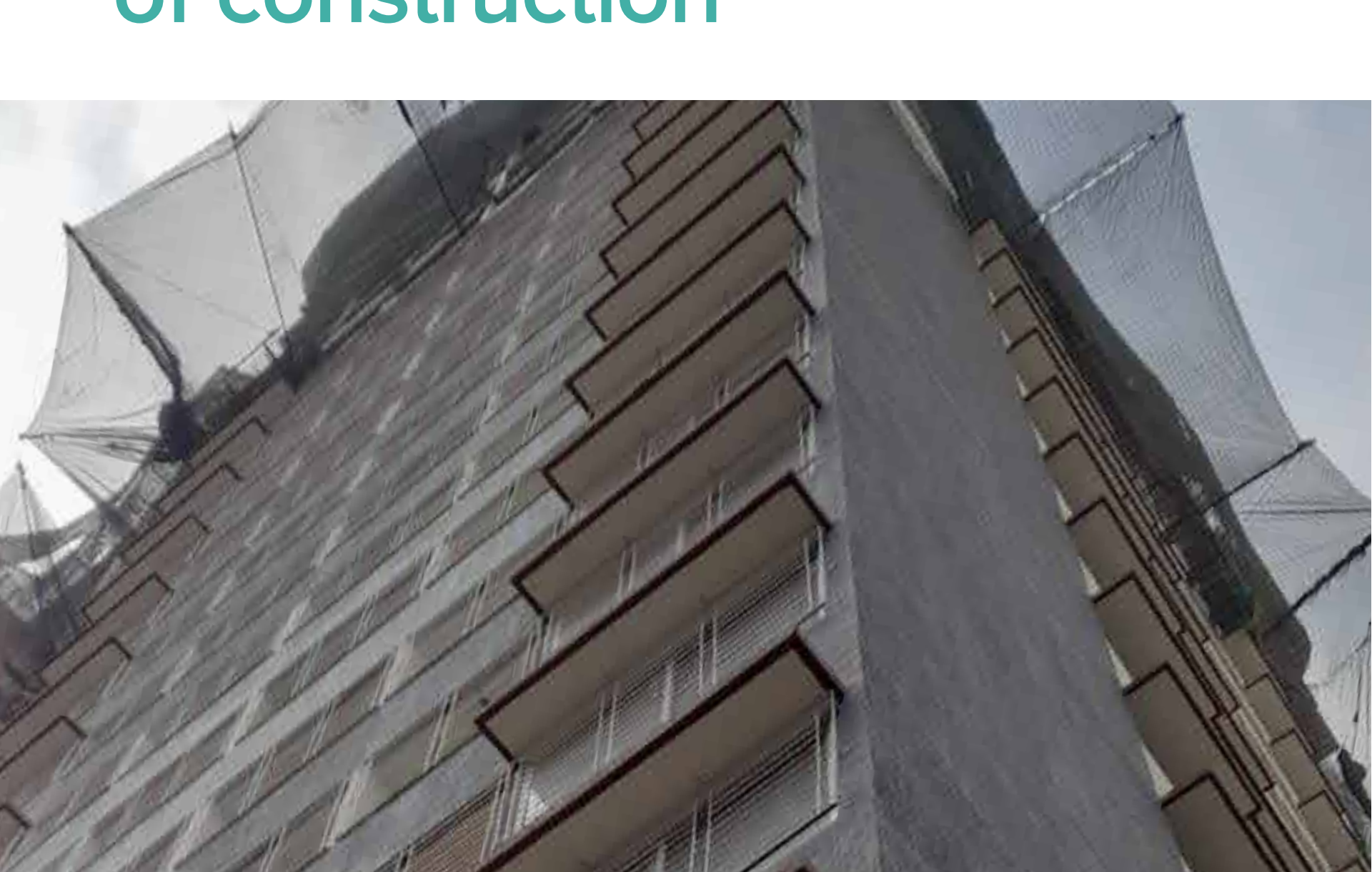
300m from Mulund station



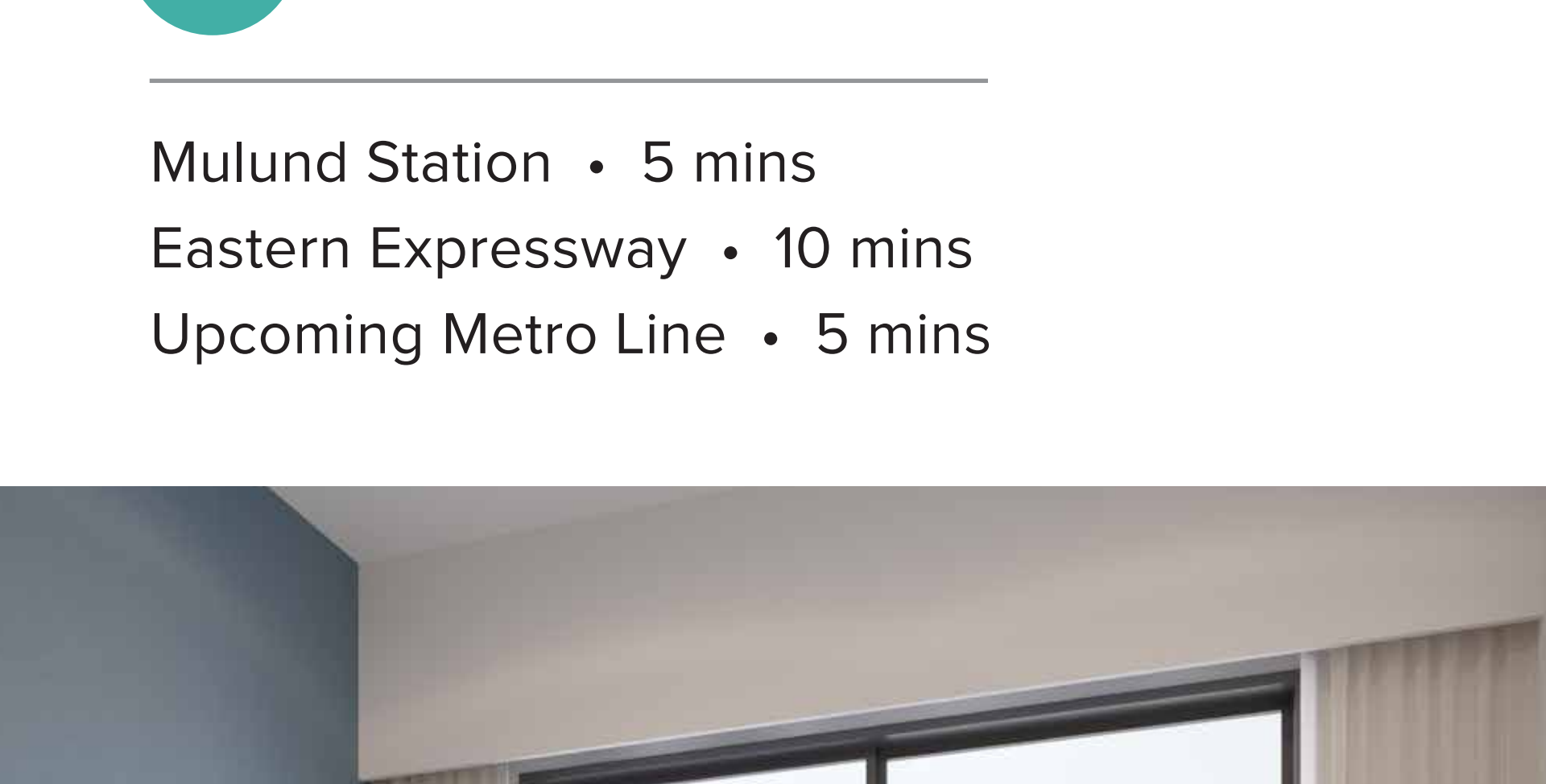
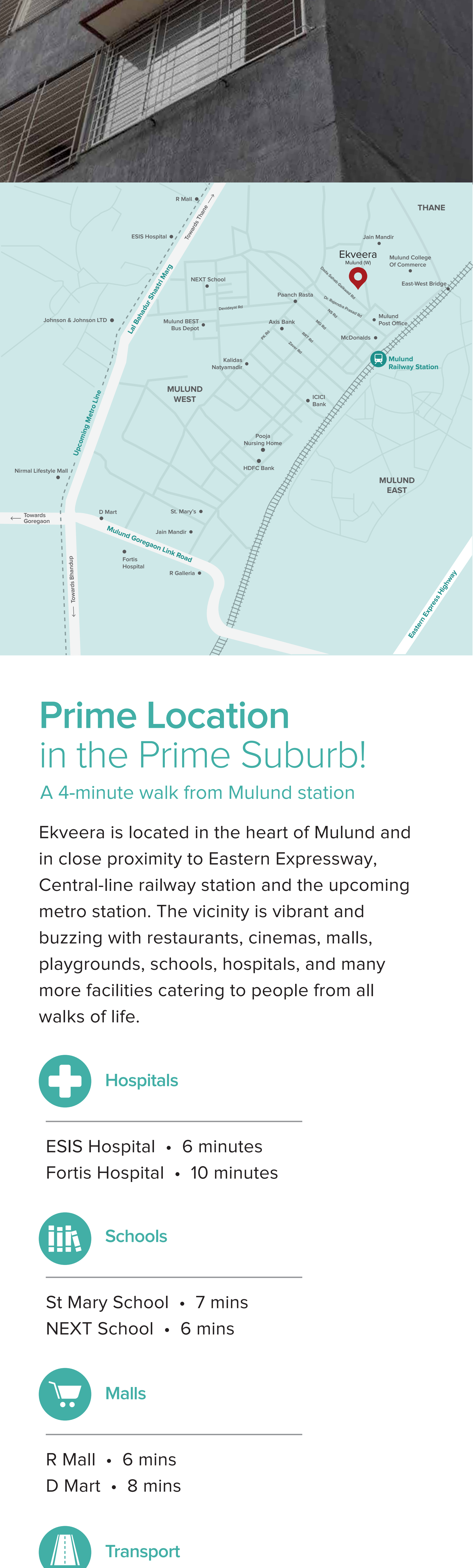
Smart studio & 1 BHK homes



Possession date December 2023



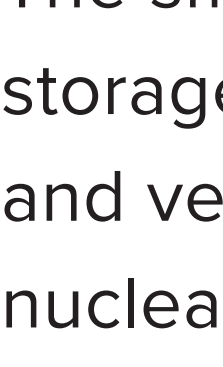
At an advanced stage of construction



Prime Location in the Prime Suburb!

A 4-minute walk from Mulund station

Ekveera is located in the heart of Mulund and in close proximity to Eastern Expressway, Central-line railway station and the upcoming metro station. The vicinity is vibrant and buzzing with restaurants, cinemas, malls, playgrounds, schools, hospitals, and many more facilities catering to people from all walks of life.



Hospitals

ESIS Hospital • 6 minutes

Fortis Hospital • 10 minutes



Schools

St Mary School • 7 mins

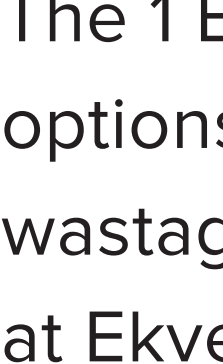
NEXT School • 6 mins



Malls

R Mall • 6 mins

D Mart • 8 mins

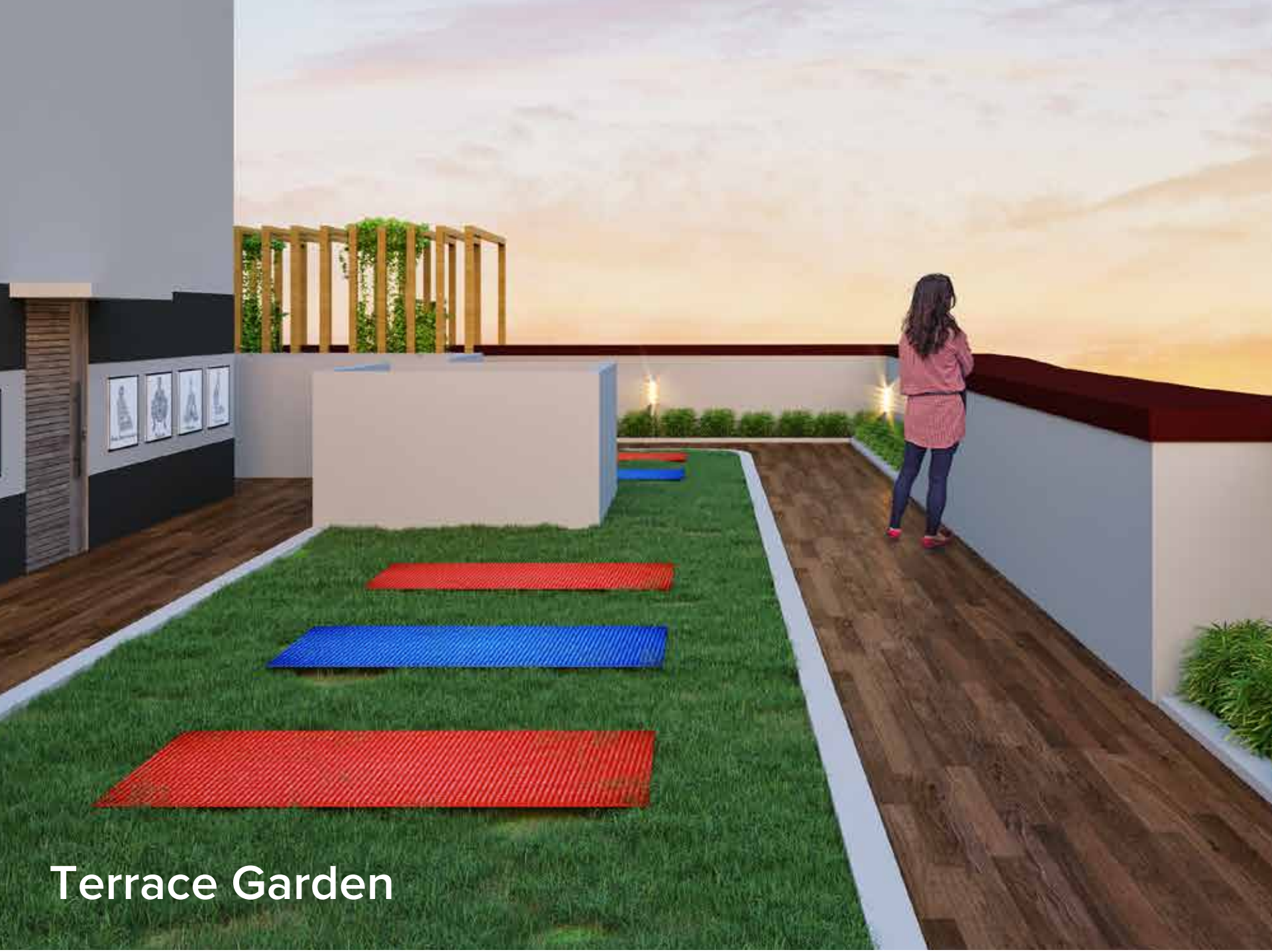


Transport

Mulund Station • 5 mins

Eastern Expressway • 10 mins

Upcoming Metro Line • 5 mins



Studio 207 & 210 sq.ft.

The smart studio home provides ample storage and large windows for optimum sunlight and ventilation. It is a perfect living space for a nuclear family.



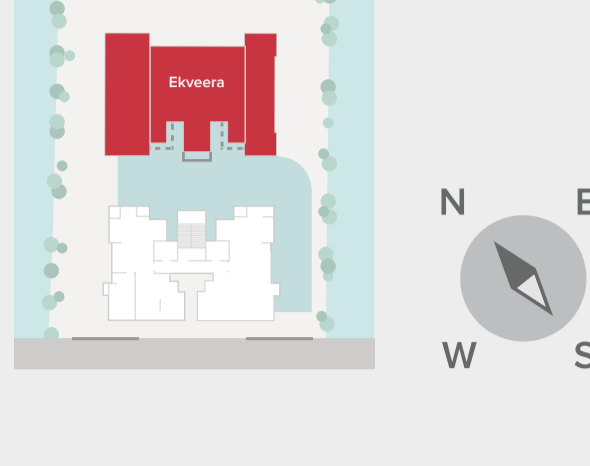
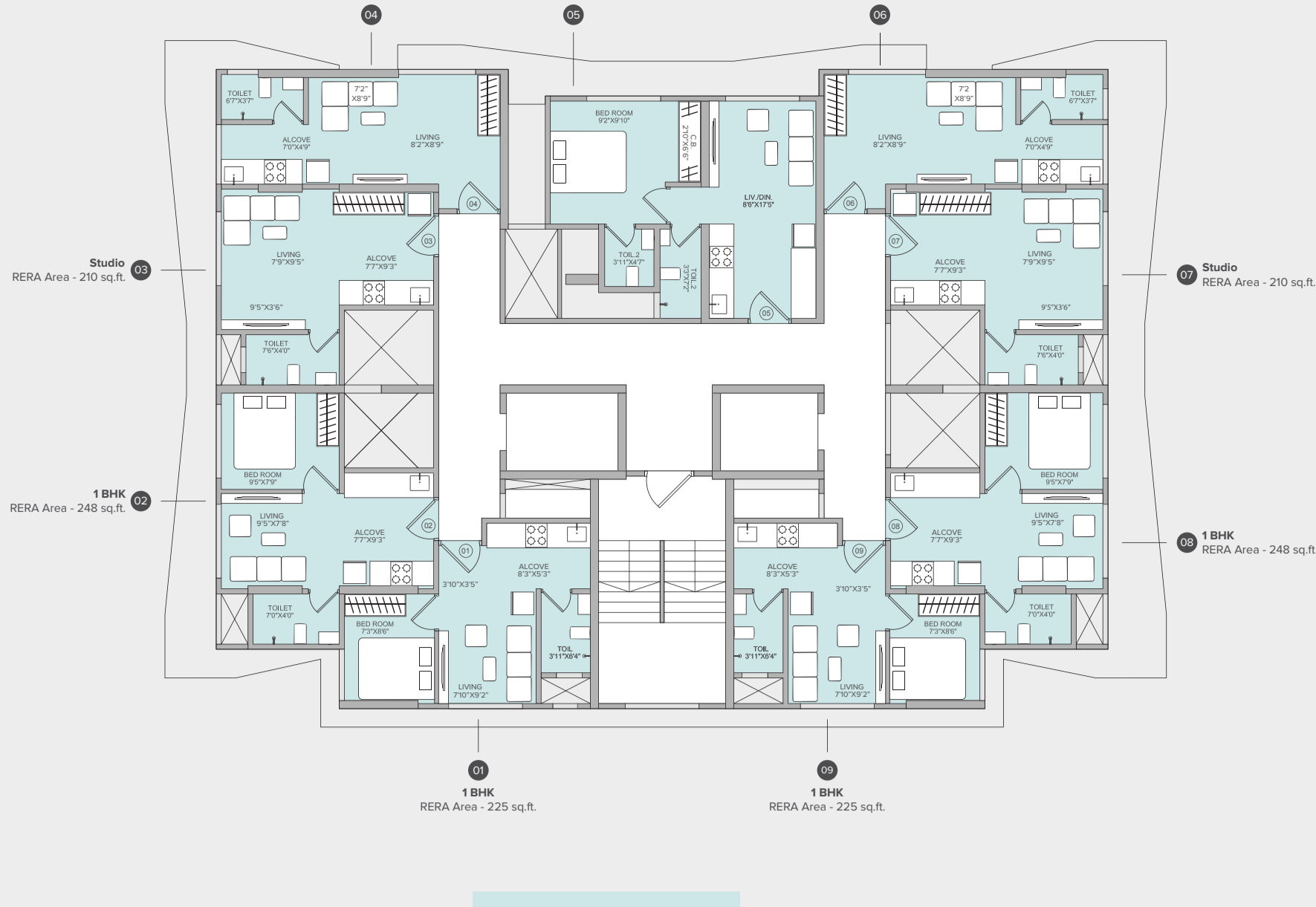
1 BHK 225, 248 & 327 sq.ft.

The 1 BHK home at Ekveera has multiple size options. With efficient layouts, minimal space wastage, and plenty of storage space, the 1BHK at Ekveera makes every square foot count.

Terrace Garden

Typical Floor Plan

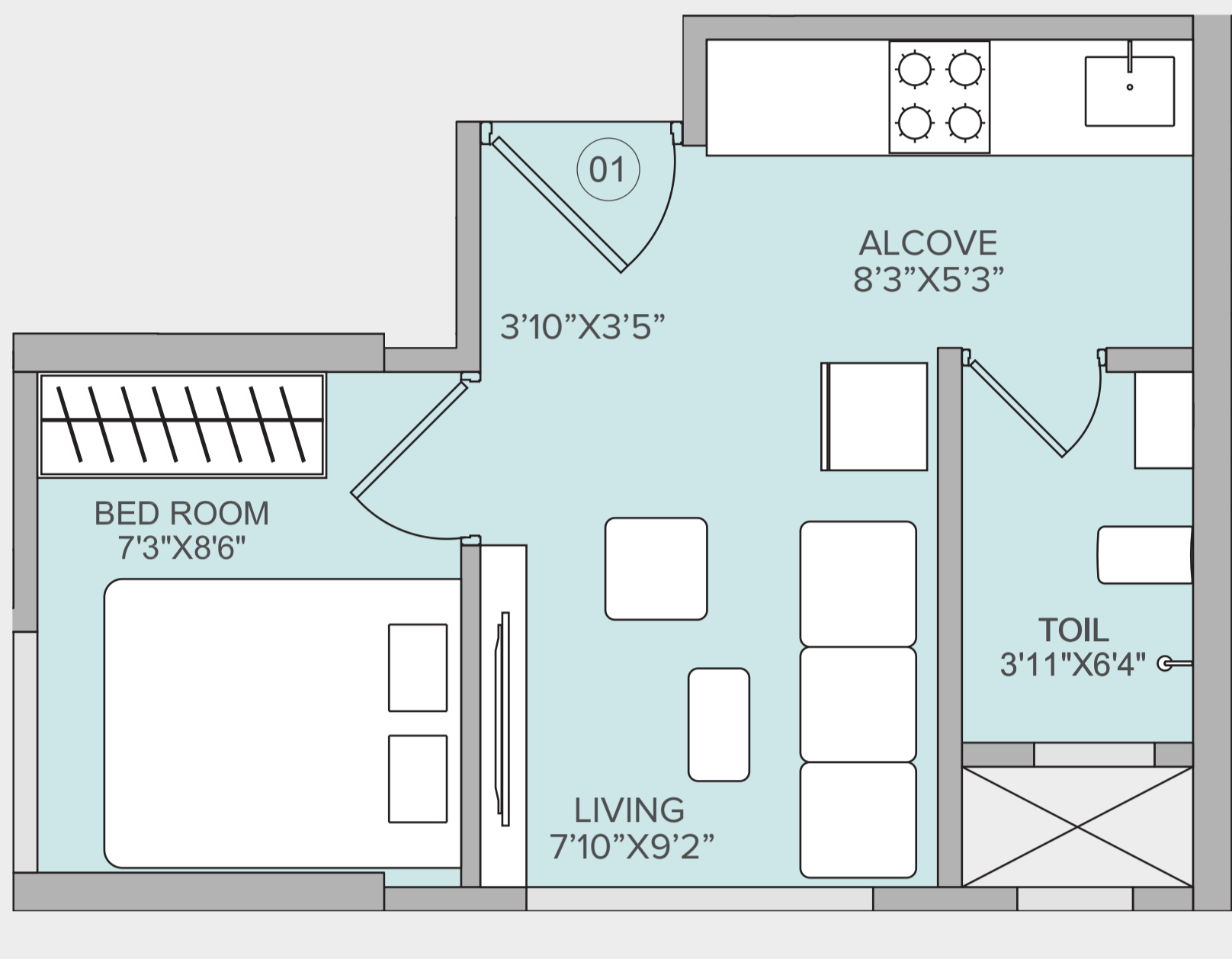
19th to 22nd Floor



Disclaimer: The floor plans are as per the approved plans and specifications as of date. These plans may vary by +/- 3% and are subject to changes.

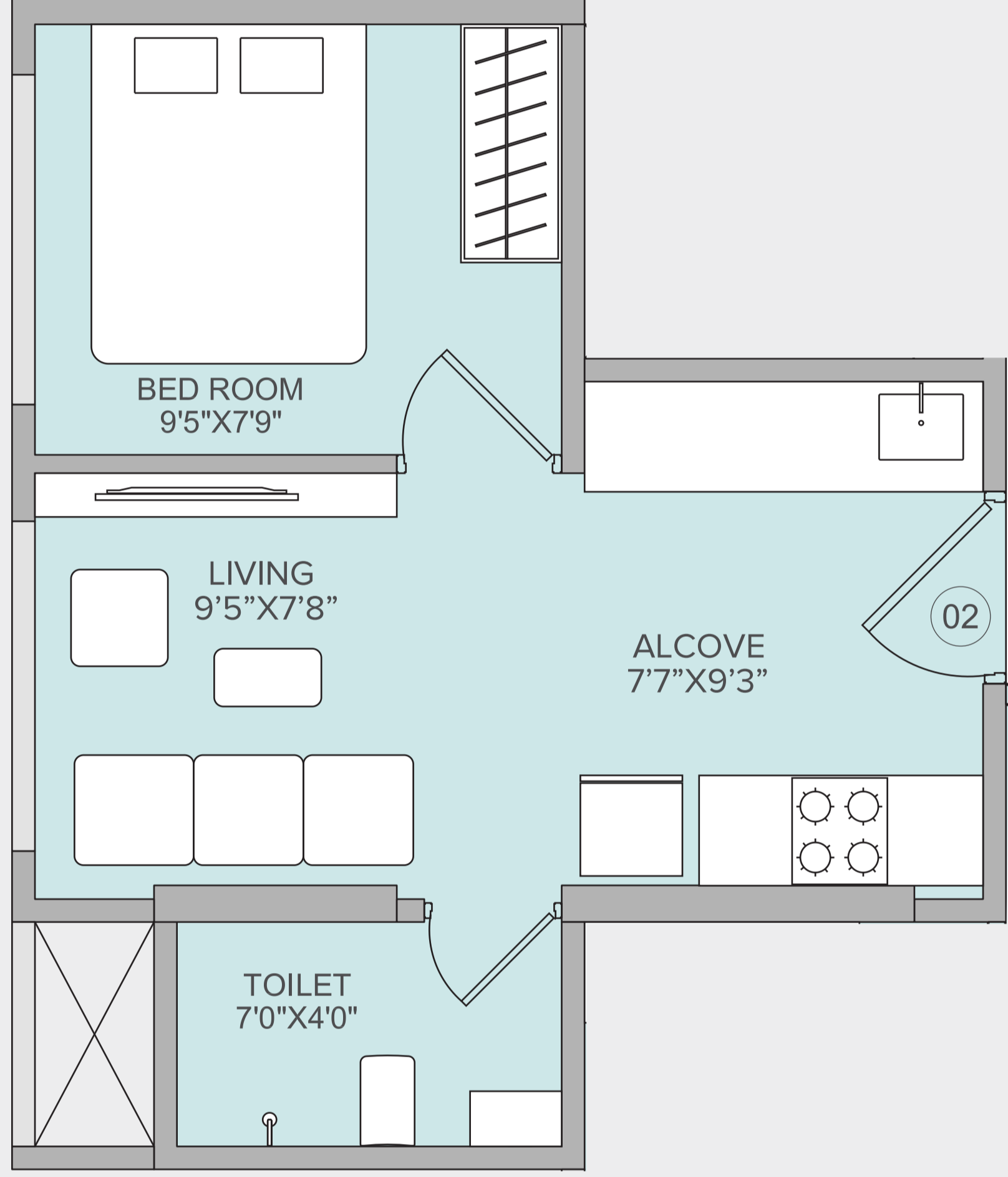
01

1 BHK • RERA Area - 225 sq.ft.



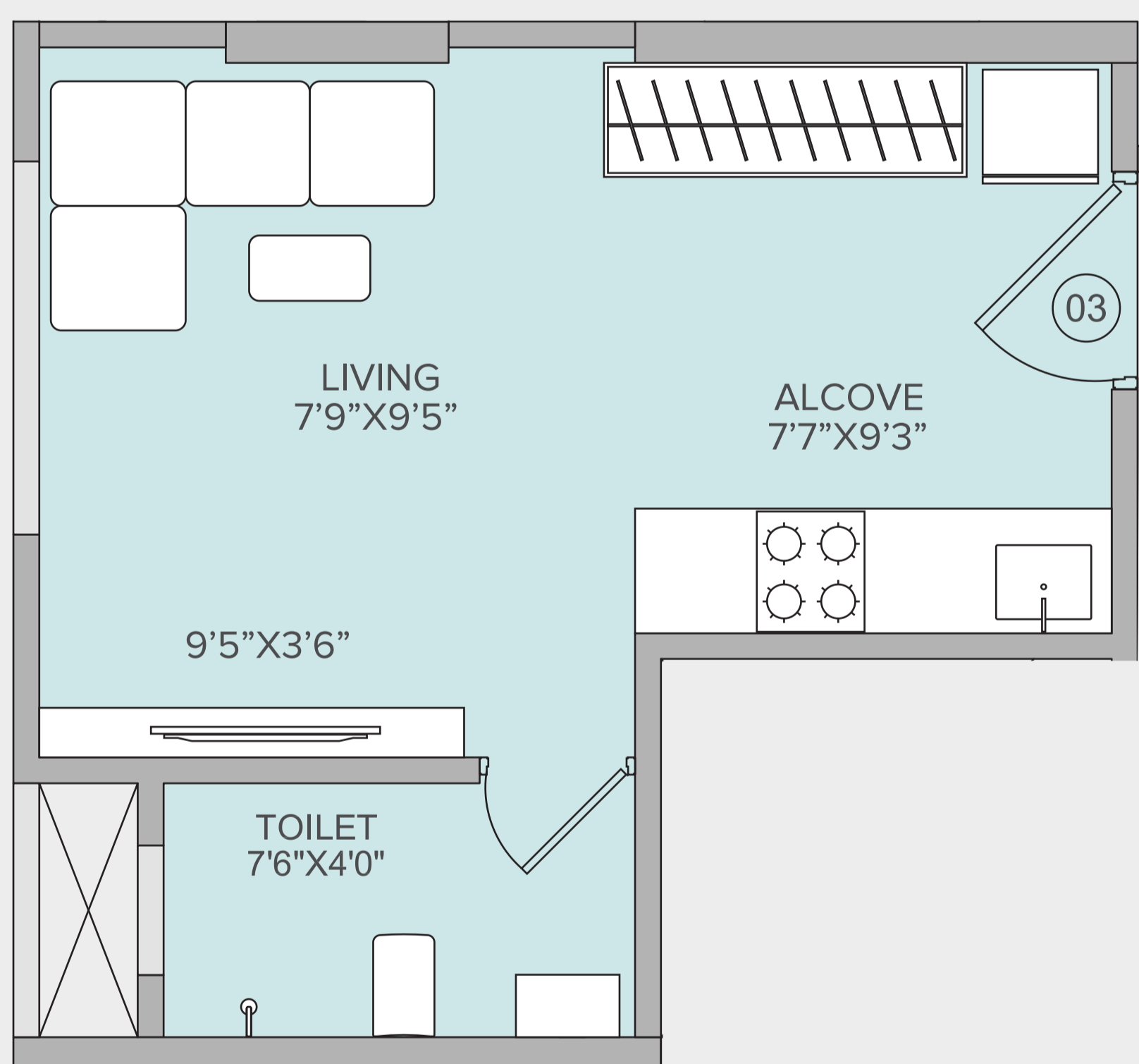
02

1 BHK • RERA Area - 248 sq.ft.



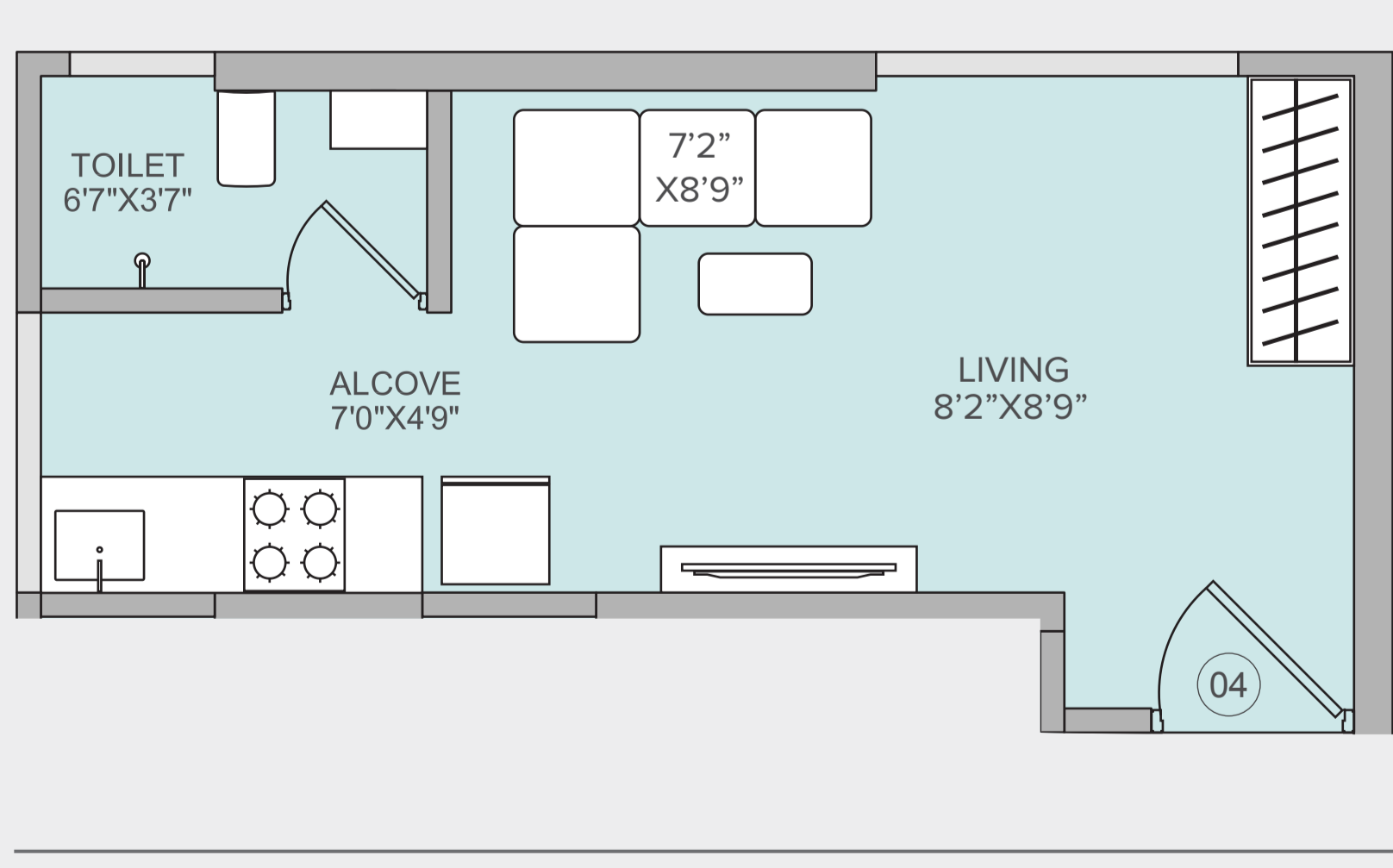
03

Studio • RERA Area - 210 sq.ft.



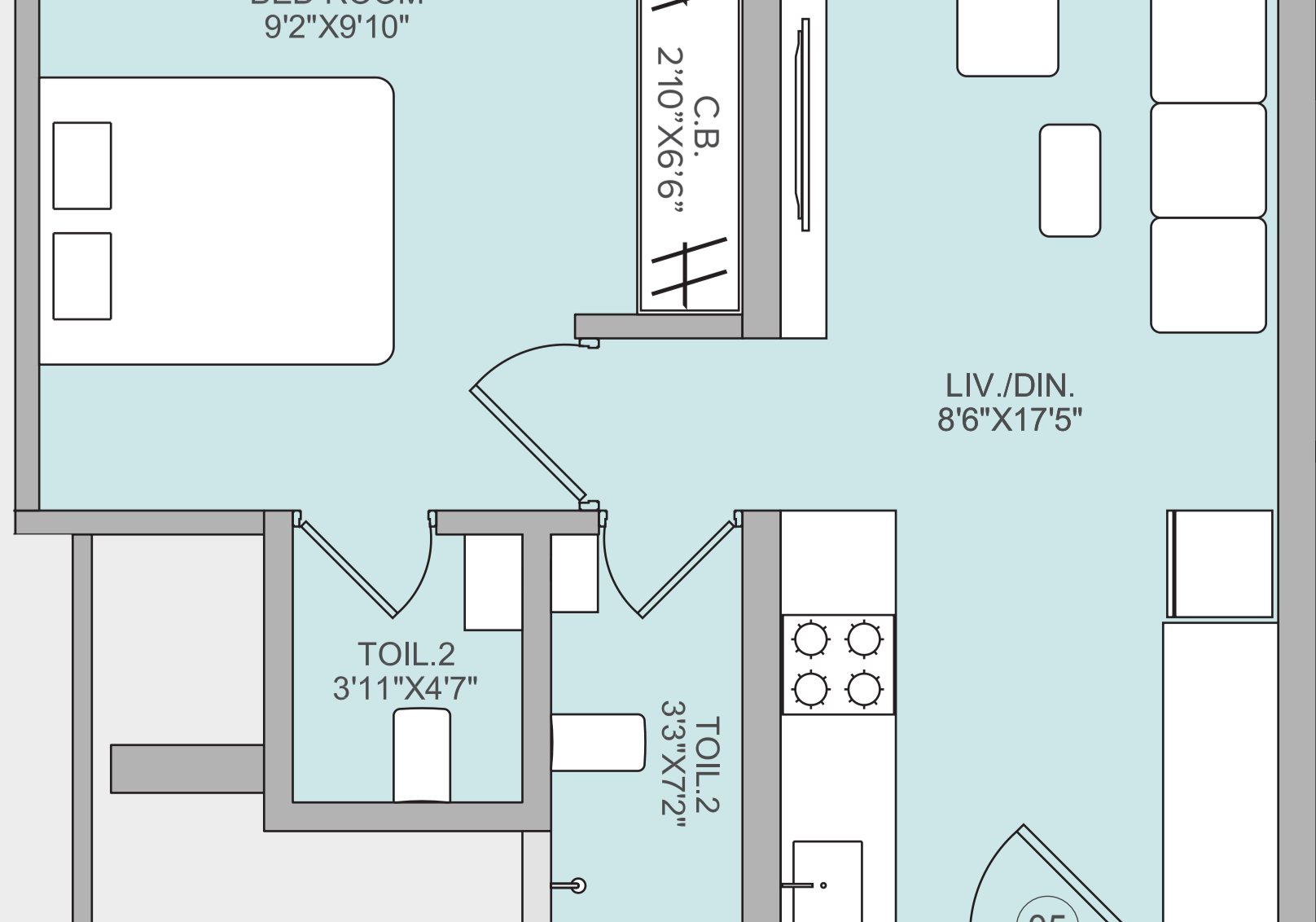
04

Studio • RERA Area - 207 sq.ft.



05

1 BHK • RERA Area - 327 sq.ft.





We have a rich history of innovation,
quality and transparency.

MORE THAN
52 YEARS

OF REAL ESTATE EXPERIENCE

MORE THAN
80 PROJECTS

COMPLETED

OVER
15,000 HOMES

TO BE DELIVERED IN NEXT 5 YEARS

2 MILLION SQ. FT.

OF BUSINESS SPACES UNDER DEVELOPMENT

18 MILLION SQ. FT.

OF LAND UNDER DEVELOPMENT

Ongoing Projects



Monte South, Byculla



Monte Carlo, Mulund (W)



Emblem, Mulund (W)



Nexzone, Panvel



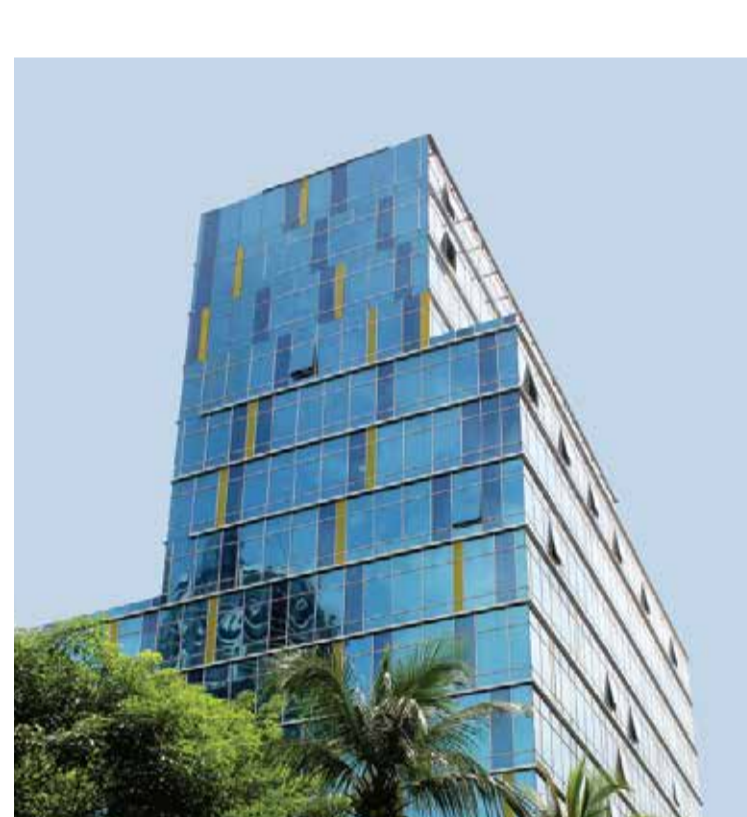
Nexworld, Dombivli (E)



NeoHomes, Bhandup (W)



Futurex, Lower Parel



Icon, Lower Parel



Monte Plaza, Mulund (W)



Millennium, Mulund (W)



The project has been registered via MahaRERA registration number: P51800032741 and is available on the website

<https://maharera.mahaonline.gov.in>

Disclaimer:

Ekveera is a project developed by Nexzone Buildcon LLP (A part of Marathon Group Company).

Ekveera is an SRA project, the first 17 floors comprise of rehab units and the top 5 floors are sale units.

The rendered images of the proposed Residential Flat are of a specific configuration and for representation purpose only. The Promoter/ developer shall not be required to provide any furniture, items, goods, amenities etc as displayed in the picture/s.

The views depicted in the pictures are as presently available from some specific flats and they may vary over period of time for reasons beyond the control of the Promoter.

The amenities shown herein are only indicative and they are subject to change/s based on approval from competent authorities.

Maps may not be to scale and distances are as available on Google Maps.

All dimensions mentioned in the drawings may vary due to construction contingencies, site conditions and changes required by regulatory authorities.

Site Address:

Ekveera, Dadasaheb Gaikwad Road, Near Mulund Station, Govind Pandurang Patil Chowk, Mulund West, Mumbai, Maharashtra 400080.

Sales Office:

Marathon Millennium, LBS Marg,
Beside Nirmal Lifestyle Mall, Mulund West,
Mumbai, Maharashtra 400080.

T: 7671 900 900

E: sales@marathonrealty.com

W: marathon.in/ekveera